



F1-RB19 Metric Threads

Bonding Fasteners

Rotaloc International, LLC

Sample Image



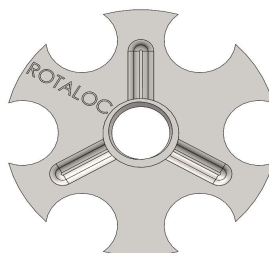
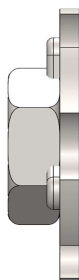
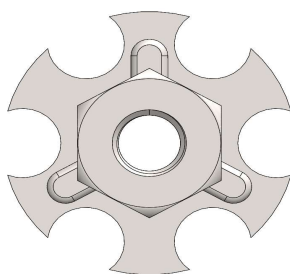
As Shown: F1-RB19-M5

F1 Female Hex Nut

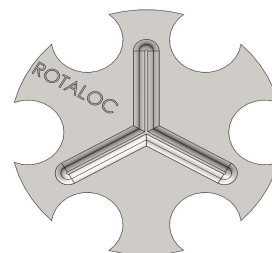
RB19 19 Millimeter Round Baseplate

Example - Part Number

F1-RB19-M5



Open (Thru)



Closed (Blind)

Thread - Inch

Thread	M4	M5	M6	M8	M10	M12	
Material	Mild Steel				Stainless Steel		
Plating	TZP (Trivalent Zinc)	Zinc-Nickel	Nano	E-Coat	Grades	303	304 316

Other plating and coating options available

* Grayed-out sizes are not recommended with shown baseplate

The F1 assembly adjoins a hex-style nut to one of our many baseplates. If a deeper thread length is needed we highly recommend using an F2 fitting which can be as deep as 2-inches or 50-millimeters

All plating and materials offered are RoHS and REACH Compliant

Availability

Many common sizes in stock. Call for availability.

A Rotaloc® Representative will be happy to discuss your specific application and product specifications.

Contact Rotaloc®

Contact Us:

Tel (303) 948-5434 or Toll Free (888) Rotaloc or (888)-768-2562
www.rotaloc.com | info@rotaloc.com

Address

Rotaloc International, LLC
 9903 Titan Court, Suite #15, Littleton, CO 80125 - USA

Value - Quality - Service



F1-RB23 Metric Threads

Bonding Fasteners

Rotaloc International, LLC

Sample Image



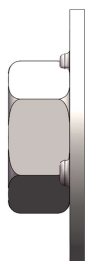
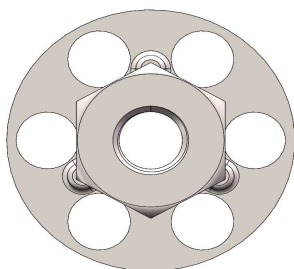
As Shown: F1-RB23-M6

F1 Female Hex Nut

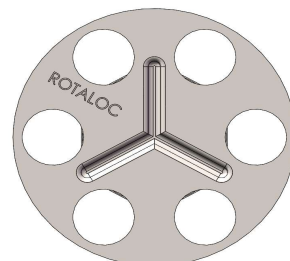
RB23 23 Millimeter Round Baseplate

Example - Part Number

F1-RB23-M6



Open (Thru)



Closed (Blind)

Thread - Inch

Thread	M4	M5	M6	M8	M10	M12	
Material	Mild Steel				Stainless Steel		
Plating	TZP (Trivalent Zinc)	Zinc-Nickel	Nano	E-Coat	Grades	303	304 316

Other plating and coating options available

* Grayed-out sizes are not recommended with shown baseplate

The F1 assembly adjoins a hex-style nut to one of our many baseplates. If a deeper thread length is needed we highly recommend using an F2 fitting which can be as deep as 2-inches or 50-millimeters

All plating and materials offered are RoHS and REACH Compliant

Availability

Many common sizes in stock. Call for availability.

A Rotaloc® Representative will be happy to discuss your specific application and product specifications.

Contact Rotaloc®

Contact Us:

Tel (303) 948-5434 or Toll Free (888) Rotaloc or (888)-768-2562
www.rotaloc.com | info@rotaloc.com

Address

Rotaloc International, LLC
 9903 Titan Court, Suite #15, Littleton, CO 80125 - USA

Value - Quality - Service



F1-RB32 Metric Threads

Bonding Fasteners

Rotaloc International, LLC

Sample Image



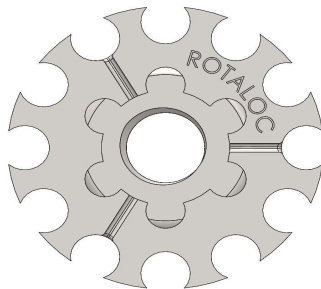
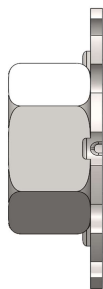
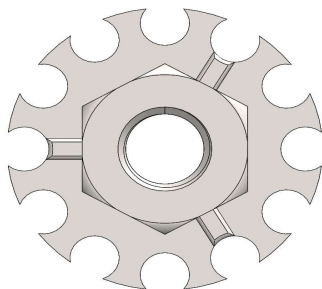
As Shown: F1-RB32-M10

F1 Female Hex Nut

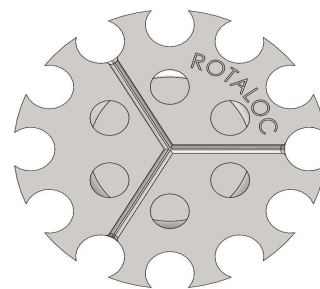
RB32 32 Millimeter Round Baseplate

Example - Part Number

F1-RB32-M10



Open (Thru)



Closed (Blind)

Thread - Inch

Thread	M4	M5	M6	M8	M10	M12	
Material	Mild Steel				Stainless Steel		
Plating	TZP (Trivalent Zinc)	Zinc-Nickel	Nano	E-Coat	Grades	303	304 316

Other plating and coating options available

* Grayed-out sizes are not recommended with shown baseplate

The F1 assembly adjoins a hex-style nut to one of our many baseplates. If a deeper thread length is needed we highly recommend using an F2 fitting which can be as deep as 2-inches or 50-millimeters

All plating and materials offered are RoHS and REACH Compliant

Availability

Many common sizes in stock. Call for availability.

A Rotaloc® Representative will be happy to discuss your specific application and product specifications.

Contact Rotaloc®

Contact Us:

Tel (303) 948-5434 or Toll Free (888) Rotaloc or (888)-768-2562
www.rotaloc.com | info@rotaloc.com

Address

Rotaloc International, LLC
 9903 Titan Court, Suite #15, Littleton, CO 80125 - USA

Value - Quality - Service



F1-RB32 Metric Threads

Bonding Fasteners

Rotaloc International, LLC

Sample Image



As Shown: F1-RB32-M10

F1

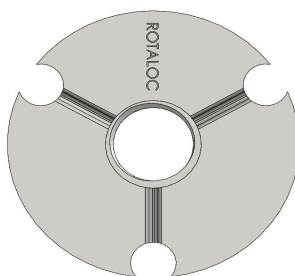
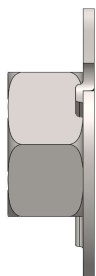
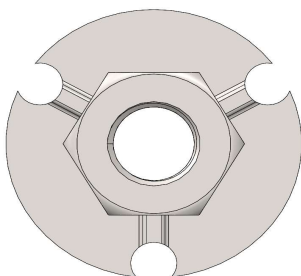
Female Hex Nut

RB32#4

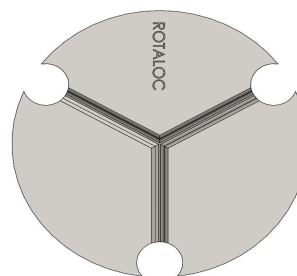
32 Millimeter Round Baseplate

Example - Part Number

F1-RB32#4-M6



Open (Thru)



Closed (Blind)

Thread - Inch

Thread	M4	M5	M6	M8	M10	M12	
Material	Mild Steel				Stainless Steel		
Plating	TZP (Trivalent Zinc)	Zinc-Nickel	Nano	E-Coat	Grades	303	304 316

Other plating and coating options available

* Grayed-out sizes are not recommended with shown baseplate

The F1 assembly adjoins a hex-style nut to one of our many baseplates. If a deeper thread length is needed we highly recommend using an F2 fitting which can be as deep as 2-inches or 50-millimeters

All plating and materials offered are RoHS and REACH Compliant

Availability

Many common sizes in stock. Call for availability.

A Rotaloc® Representative will be happy to discuss your specific application and product specifications.

Contact Rotaloc®

Contact Us:

Tel (303) 948-5434 or Toll Free (888) Rotaloc or (888)-768-2562
www.rotaloc.com | info@rotaloc.com

Address

Rotaloc International, LLC
 9903 Titan Court, Suite #15, Littleton, CO 80125 - USA

Value - Quality - Service



F1-RB38 Metric Threads

Bonding Fasteners

Rotaloc International, LLC

Sample Image



As Shown: F1-RB38-M6

F1

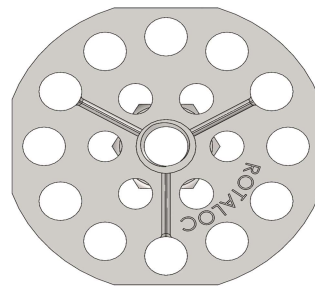
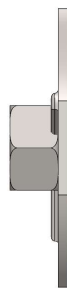
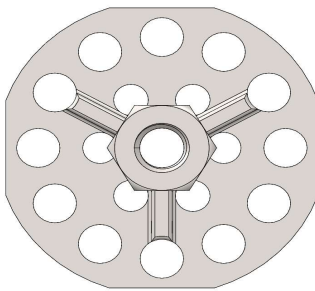
Female Hex Nut

RB38

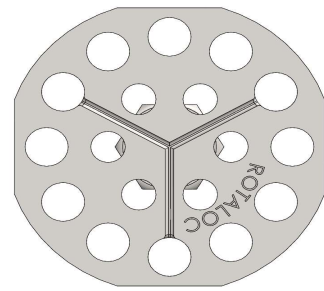
38 Millimeter Round Baseplate

Example - Part Number

F1-RB38-M6



Open (Thru)



Closed (Blind)

Thread - Inch

Thread	M4	M5	M6	M8	M10	M12	
Material	Mild Steel				Stainless Steel		
Plating	TZP (Trivalent Zinc)	Zinc-Nickel	Nano	E-Coat	Grades	303	304 316

Other plating and coating options available

* Grayed-out sizes are not recommended with shown baseplate

The F1 assembly adjoins a hex-style nut to one of our many baseplates. If a deeper thread length is needed we highly recommend using an F2 fitting which can be as deep as 2-inches or 50-millimeters

All plating and materials offered are RoHS and REACH Compliant

Availability

Many common sizes in stock. Call for availability.

A Rotaloc® Representative will be happy to discuss your specific application and product specifications.

Contact Rotaloc®

Contact Us:

Tel (303) 948-5434 or Toll Free (888) Rotaloc or (888)-768-2562
www.rotaloc.com | info@rotaloc.com

Address

Rotaloc International, LLC
 9903 Titan Court, Suite #15, Littleton, CO 80125 - USA

Value - Quality - Service



F1-RB38#4 Metric Threads

Bonding Fasteners

Rotaloc International, LLC

Sample Image



As Shown: F1-RB38#4-M6

F1

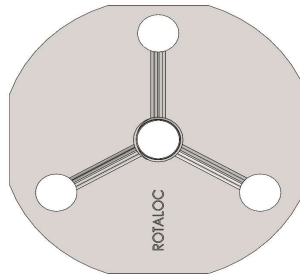
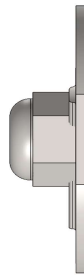
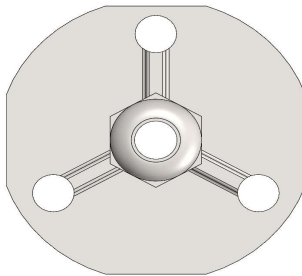
Female Hex Nut

RB38#4

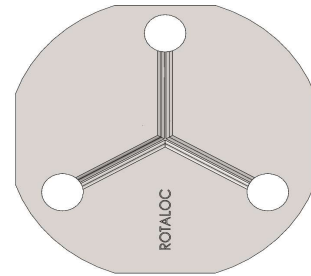
38 Millimeter Round Baseplate

Example - Part Number

F1-RB38#4-M6



Open (Thru)



Closed (Blind)

Thread - Inch

Thread	M4	M5	M6	M8	M10	M12	
Material	Mild Steel				Stainless Steel		
Plating	TZP (Trivalent Zinc)	Zinc-Nickel	Nano	E-Coat	Grades	303	304 316

Other plating and coating options available

* Grayed-out sizes are not recommended with shown baseplate

The F1 assembly adjoins a hex-style nut to one of our many baseplates. If a deeper thread length is needed we highly recommend using an F2 fitting which can be as deep as 2-inches or 50-millimeters

All plating and materials offered are RoHS and REACH Compliant

Availability

Many common sizes in stock. Call for availability.

A Rotaloc® Representative will be happy to discuss your specific application and product specifications.

Contact Rotaloc®

Contact Us:

Tel (303) 948-5434 or Toll Free (888) Rotaloc or (888)-768-2562
www.rotaloc.com | info@rotaloc.com

Address

Rotaloc International, LLC
 9903 Titan Court, Suite #15, Littleton, CO 80125 - USA

Value - Quality - Service



F1-RB38Barb Metric Threads

Bonding Fasteners

Rotaloc International, LLC

Sample Image



As Shown: F1-RB38Barb-M8

F1

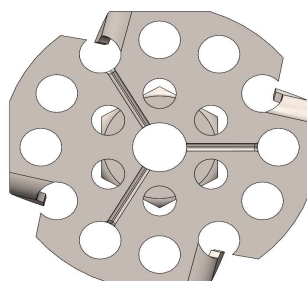
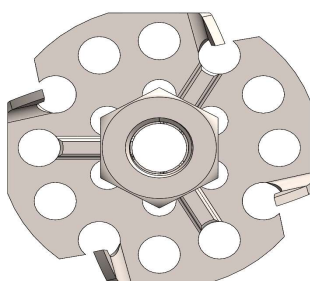
Female Hex Nut

RB38Barb

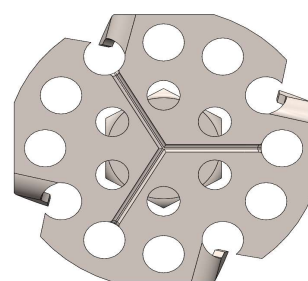
38 Millimeter Round Baseplate

Example - Part Number

F1-RB38Barb-M8



Open (Thru)



Closed (Blind)

Thread - Inch

Thread	M4	M5	M6	M8	M10	M12	
Material	Mild Steel				Stainless Steel		
Plating	TZP (Trivalent Zinc)	Zinc-Nickel	Nano	E-Coat	Grades	303	304 316

Other plating and coating options available

* Grayed-out sizes are not recommended with shown baseplate

The F1 assembly adjoins a hex-style nut to one of our many baseplates. If a deeper thread length is needed we highly recommend using an F2 fitting which can be as deep as 2-inches or 50-millimeters

All plating and materials offered are RoHS and REACH Compliant

Availability

Many common sizes in stock. Call for availability.

A Rotaloc® Representative will be happy to discuss your specific application and product specifications.

Contact Rotaloc®

Contact Us:

Tel (303) 948-5434 or Toll Free (888) Rotaloc or (888)-768-2562
www.rotaloc.com | info@rotaloc.com

Address

Rotaloc International, LLC
 9903 Titan Court, Suite #15, Littleton, CO 80125 - USA

Value - Quality - Service



F1-RB50 Metric Threads

Bonding Fasteners

Rotaloc International, LLC

Sample Image



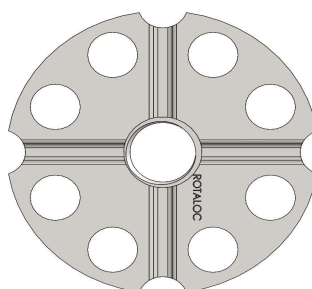
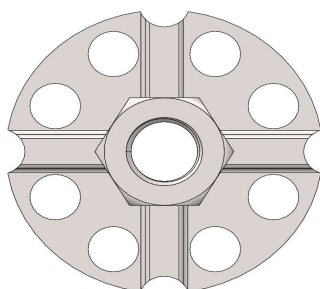
As Shown: F1-RB50-M12

F1 Female Hex Nut

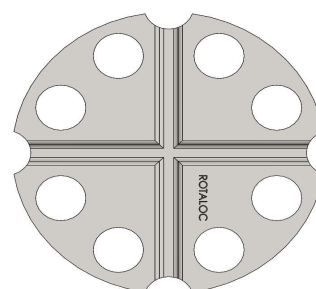
RB50 50 Millimeter Round Baseplate

Example - Part Number

F1-RB50-M12



Open (Thru)



Closed (Blind)

Thread - Inch

Thread	M4	M5	M6	M8	M10	M12	
Material	Mild Steel				Stainless Steel		
Plating	TZP (Trivalent Zinc)	Zinc-Nickel	Nano	E-Coat	Grades	303	304 316

Other plating and coating options available

* Grayed-out sizes are not recommended with shown baseplate

The F1 assembly adjoins a hex-style nut to one of our many baseplates. If a deeper thread length is needed we highly recommend using an F2 fitting which can be as deep as 2-inches or 50-millimeters

All plating and materials offered are RoHS and REACH Compliant

Availability

Many common sizes in stock. Call for availability.

A Rotaloc® Representative will be happy to discuss your specific application and product specifications.

Contact Rotaloc®

Contact Us:

Tel (303) 948-5434 or Toll Free (888) Rotaloc or (888)-768-2562
www.rotaloc.com | info@rotaloc.com

Address

Rotaloc International, LLC
 9903 Titan Court, Suite #15, Littleton, CO 80125 - USA

Value - Quality - Service

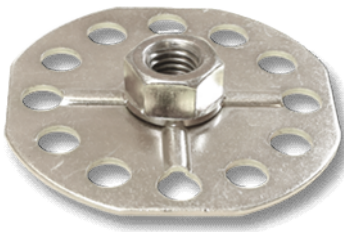


F1-RB76 Metric Threads

Bonding Fasteners

Rotaloc International, LLC

Sample Image



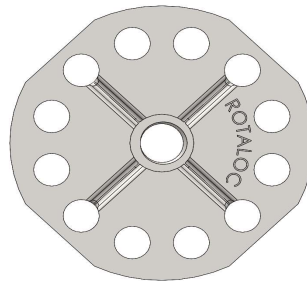
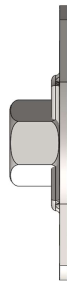
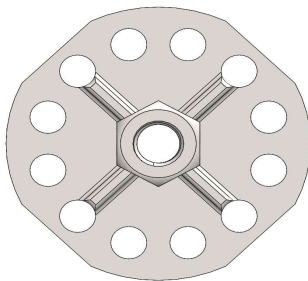
As Shown: F1-RB76-M10

F1 Female Hex Nut

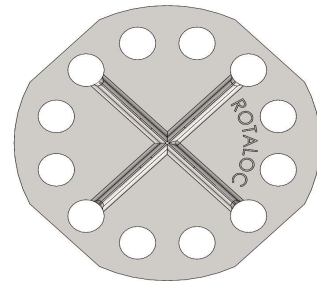
RB76 76 Millimeter Round Baseplate

Example - Part Number

F1-RB76-M10



Open (Thru)



Closed (Blind)

Thread - Inch

Thread	M4	M5	M6	M8	M10	M12	
Material	Mild Steel				Stainless Steel		
Plating	TZP (Trivalent Zinc)	Zinc-Nickel	Nano	E-Coat	Grades	303	304 316

Other plating and coating options available

* Grayed-out sizes are not recommended with shown baseplate

The F1 assembly adjoins a hex-style nut to one of our many baseplates. If a deeper thread length is needed we highly recommend using an F2 fitting which can be as deep as 2-inches or 50-millimeters

All plating and materials offered are RoHS and REACH Compliant

Availability

Many common sizes in stock. Call for availability.

A Rotaloc® Representative will be happy to discuss your specific application and product specifications.

Contact Rotaloc®

Contact Us:

Tel (303) 948-5434 or Toll Free (888) Rotaloc or (888)-768-2562
www.rotaloc.com | info@rotaloc.com

Address

Rotaloc International, LLC
 9903 Titan Court, Suite #15, Littleton, CO 80125 - USA

Value - Quality - Service



F1-SB15 Metric Threads

Bonding Fasteners

Rotaloc International, LLC

Sample Image



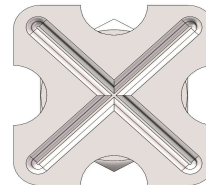
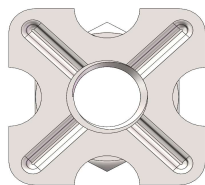
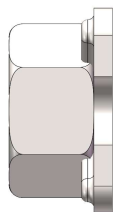
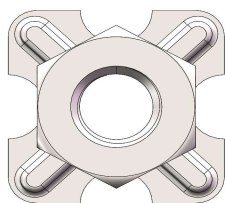
As Shown: F1-SB15-M6

F1 Female Hex Nut

SB15 15 Millimeter Square Baseplate

Example - Part Number

F1-SB15-M6



Open (Thru)

Closed (Blind)

Thread - Inch

Thread	M4	M5	M6	M8	M10	M12	
Material	Mild Steel				Stainless Steel		
Plating	TZP (Trivalent Zinc)	Zinc-Nickel	Nano	E-Coat	Grades	303	304 316

Other plating and coating options available

* Grayed-out sizes are not recommended with shown baseplate

The F1 assembly adjoins a hex-style nut to one of our many baseplates. If a deeper thread length is needed we highly recommend using an F2 fitting which can be as deep as 2-inches or 50-millimeters

All plating and materials offered are RoHS and REACH Compliant

Availability

Many common sizes in stock. Call for availability.

A Rotaloc® Representative will be happy to discuss your specific application and product specifications.

Contact Rotaloc®

Contact Us:

Tel (303) 948-5434 or Toll Free (888) Rotaloc or (888)-768-2562
www.rotaloc.com | info@rotaloc.com

Address

Rotaloc International, LLC
 9903 Titan Court, Suite #15, Littleton, CO 80125 - USA

Value - Quality - Service



F1-SB30 Metric Threads

Bonding Fasteners

Rotaloc International, LLC

Sample Image



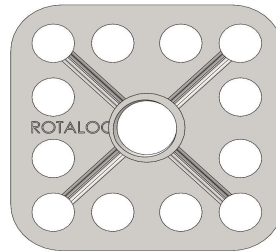
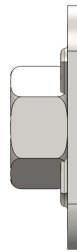
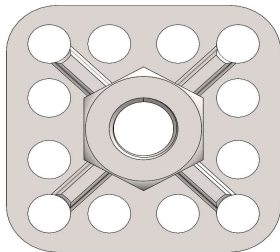
As Shown: F1-SB30-M8

F1 Female Hex Nut

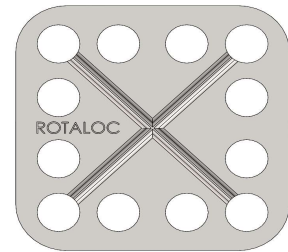
SB30 30 Millimeter Square Baseplate

Example - Part Number

F1-SB30-M8



Open (Thru)



Closed (Blind)

Thread - Inch

Thread	M4	M5	M6	M8	M10	M12	
Material	Mild Steel				Stainless Steel		
Plating	TZP (Trivalent Zinc)	Zinc-Nickel	Nano	E-Coat	Grades	303	304 316

Other plating and coating options available

* Grayed-out sizes are not recommended with shown baseplate

The F1 assembly adjoins a hex-style nut to one of our many baseplates. If a deeper thread length is needed we highly recommend using an F2 fitting which can be as deep as 2-inches or 50-millimeters

All plating and materials offered are RoHS and REACH Compliant

Availability

Many common sizes in stock. Call for availability.

A Rotaloc® Representative will be happy to discuss your specific application and product specifications.

Contact Rotaloc®

Contact Us:

Tel (303) 948-5434 or Toll Free (888) Rotaloc or (888)-768-2562
www.rotaloc.com | info@rotaloc.com

Address

Rotaloc International, LLC
 9903 Titan Court, Suite #15, Littleton, CO 80125 - USA

Value - Quality - Service



F1-SB32 Metric Threads

Bonding Fasteners

Rotaloc International, LLC

Sample Image



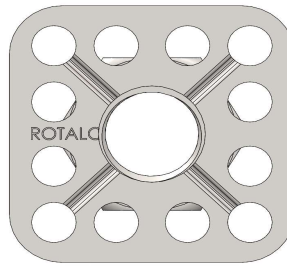
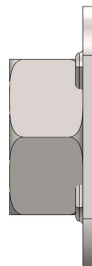
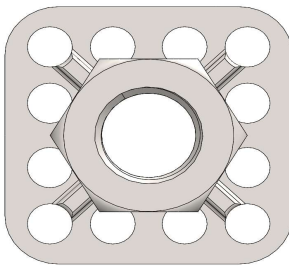
As Shown: F1-SB32-M12

F1 Female Hex Nut

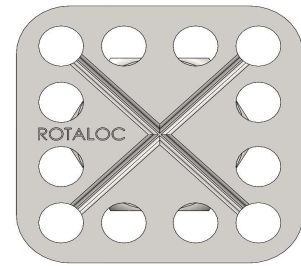
SB32 32 Millimeter Square Baseplate

Example - Part Number

F1-SB32-M12



Open (Thru)



Closed (Blind)

Thread - Inch

Thread	M4	M5	M6	M8	M10	M12	
Material	Mild Steel				Stainless Steel		
Plating	TZP (Trivalent Zinc)	Zinc-Nickel	Nano	E-Coat	Grades	303	304 316

Other plating and coating options available

* Grayed-out sizes are not recommended with shown baseplate

The F1 assembly adjoins a hex-style nut to one of our many baseplates. If a deeper thread length is needed we highly recommend using an F2 fitting which can be as deep as 2-inches or 50-millimeters

All plating and materials offered are RoHS and REACH Compliant

Availability

Many common sizes in stock. Call for availability.

A Rotaloc® Representative will be happy to discuss your specific application and product specifications.

Contact Rotaloc®

Contact Us:

Tel (303) 948-5434 or Toll Free (888) Rotaloc or (888)-768-2562
www.rotaloc.com | info@rotaloc.com

Address

Rotaloc International, LLC
 9903 Titan Court, Suite #15, Littleton, CO 80125 - USA

Value - Quality - Service



F1-SB50 Metric Threads

Bonding Fasteners

Rotaloc International, LLC

Sample Image



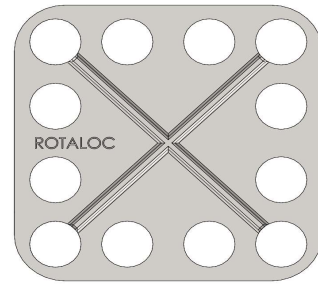
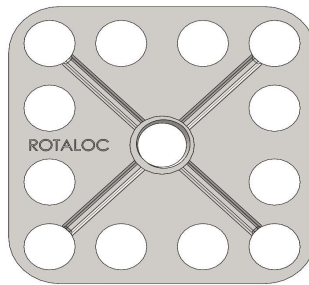
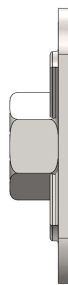
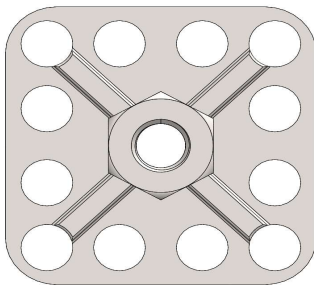
As Shown: F1-SB50-M10

F1 Female Hex Nut

SB50 50 Millimeter Square Baseplate

Example - Part Number

F1-SB50-M10



Open (Thru)

Closed (Blind)

Thread - Inch

Thread	M4	M5	M6	M8	M10	M12	
Material	Mild Steel				Stainless Steel		
Plating	TZP (Trivalent Zinc)	Zinc-Nickel	Nano	E-Coat	Grades	303	304 316

Other plating and coating options available

* Grayed-out sizes are not recommended with shown baseplate

The F1 assembly adjoins a hex-style nut to one of our many baseplates. If a deeper thread length is needed we highly recommend using an F2 fitting which can be as deep as 2-inches or 50-millimeters

All plating and materials offered are RoHS and REACH Compliant

Availability

Many common sizes in stock. Call for availability.

A Rotaloc® Representative will be happy to discuss your specific application and product specifications.

Contact Rotaloc®

Contact Us:

Tel (303) 948-5434 or Toll Free (888) Rotaloc or (888)-768-2562
www.rotaloc.com | info@rotaloc.com

Address

Rotaloc International, LLC
 9903 Titan Court, Suite #15, Littleton, CO 80125 - USA

Value - Quality - Service



F1-T15x11 Metric Threads

Bonding Fasteners

Rotaloc International, LLC

Sample Image



As Shown: F1-T15x11-M6

F1

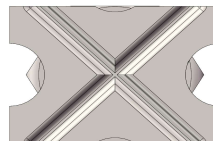
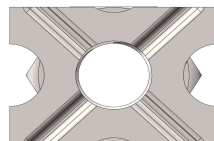
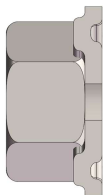
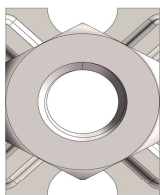
Female Hex Nut

T15x11

15x11 Millimeter Rectangular Baseplate

Example - Part Number

F1-T15x11-M6



Open (Thru)

Closed (Blind)

Thread - Inch

Thread	M4	M5	M6	M8	M10	M12	
Material	Mild Steel				Stainless Steel		
Plating	TZP (Trivalent Zinc)	Zinc-Nickel	Nano	E-Coat	Grades	303	304 316

Other plating and coating options available

* Grayed-out sizes are not recommended with shown baseplate

The F1 assembly adjoins a hex-style nut to one of our many baseplates. If a deeper thread length is needed we highly recommend using an F2 fitting which can be as deep as 2-inches or 50-millimeters

All plating and materials offered are RoHS and REACH Compliant

Availability

Many common sizes in stock. Call for availability.

A Rotaloc® Representative will be happy to discuss your specific application and product specifications.

Contact Rotaloc®

Contact Us:

Tel (303) 948-5434 or Toll Free (888) Rotaloc or (888)-768-2562
www.rotaloc.com | info@rotaloc.com

Address

Rotaloc International, LLC
 9903 Titan Court, Suite #15, Littleton, CO 80125 - USA

Value - Quality - Service



F1-T24x11.5 Metric Threads

Bonding Fasteners

Rotaloc International, LLC

Sample Image



As Shown: F1-T24x11.5-M6

F1

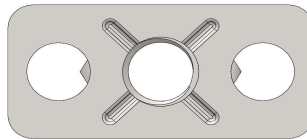
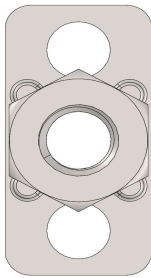
Female Hex Nut

T24x15

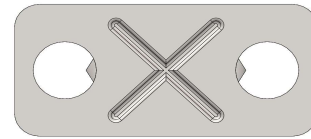
24x11.5 Millimeter Rectangular Baseplate

Example - Part Number

F1-T24x11.5-M6



Open (Thru)



Closed (Blind)

Thread - Inch

Thread	M4	M5	M6	M8	M10	M12	
Material	Mild Steel				Stainless Steel		
Plating	TZP (Trivalent Zinc)	Zinc-Nickel	Nano	E-Coat	Grades	303	304 316

Other plating and coating options available

* Grayed-out sizes are not recommended with shown baseplate

The F1 assembly adjoins a hex-style nut to one of our many baseplates. If a deeper thread length is needed we highly recommend using an F2 fitting which can be as deep as 2-inches or 50-millimeters

All plating and materials offered are RoHS and REACH Compliant

Availability

Many common sizes in stock. Call for availability.

A Rotaloc® Representative will be happy to discuss your specific application and product specifications.

Contact Rotaloc®

Contact Us:

Tel (303) 948-5434 or Toll Free (888) Rotaloc or (888)-768-2562
www.rotaloc.com | info@rotaloc.com

Address

Rotaloc International, LLC
 9903 Titan Court, Suite #15, Littleton, CO 80125 - USA

Value - Quality - Service



F1-T38x11.5 Metric Threads

Bonding Fasteners

Rotaloc International, LLC

Sample Image



As Shown: F1-T38x11.5-M5

F1

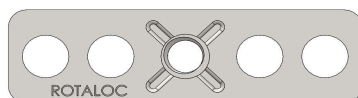
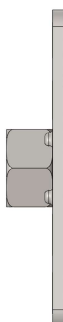
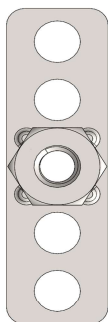
Female Hex Nut

T38x11.5

38x11.5 Millimeter Rectangular Baseplate

Example - Part Number

F1-T38x11.5-M5



Open (Thru)



Closed (Blind)

Thread - Inch

Thread	M4	M5	M6	M8	M10	M12	
Material	Mild Steel				Stainless Steel		
Plating	TZP (Trivalent Zinc)	Zinc-Nickel	Nano	E-Coat	Grades	303	304 316
Other plating and coating options available					* Grayed-out sizes are not recommended with shown baseplate		

The F1 assembly adjoins a hex-style nut to one of our many baseplates. If a deeper thread length is needed we highly recommend using an F2 fitting which can be as deep as 2-inches or 50-millimeters

All plating and materials offered are RoHS and REACH Compliant

Availability

Many common sizes in stock. Call for availability.

A Rotaloc® Representative will be happy to discuss your specific application and product specifications.

Contact Rotaloc®

Contact Us:

Tel (303) 948-5434 or Toll Free (888) Rotaloc or (888)-768-2562
www.rotaloc.com | info@rotaloc.com

Address

Rotaloc International, LLC
 9903 Titan Court, Suite #15, Littleton, CO 80125 - USA

Value - Quality - Service



F1-T38x15 Metric Threads

Bonding Fasteners

Rotaloc International, LLC

Sample Image



As Shown: F1-T38x15-M6

F1

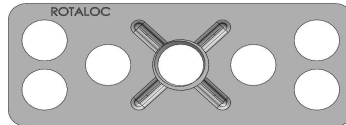
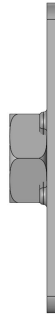
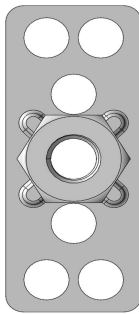
Female Hex Nut

T38x15

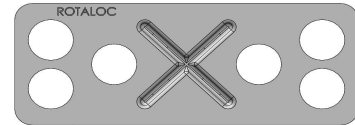
38x15 Millimeter Rectangular Baseplate

Example - Part Number

F1-T38x15-M6



Open (Thru)



Closed (Blind)

Thread - Inch

Thread	M4	M5	M6	M8	M10	M12	
Material	Mild Steel				Stainless Steel		
Plating	TZP (Trivalent Zinc)	Zinc-Nickel	Nano	E-Coat	Grades	303	304 316

Other plating and coating options available

* Grayed-out sizes are not recommended with shown baseplate

The F1 assembly adjoins a hex-style nut to one of our many baseplates. If a deeper thread length is needed we highly recommend using an F2 fitting which can be as deep as 2-inches or 50-millimeters

All plating and materials offered are RoHS and REACH Compliant

Availability

Many common sizes in stock. Call for availability.

A Rotaloc® Representative will be happy to discuss your specific application and product specifications.

Contact Rotaloc®

Contact Us:

Tel (303) 948-5434 or Toll Free (888) Rotaloc or (888)-768-2562
www.rotaloc.com | info@rotaloc.com

Address

Rotaloc International, LLC
 9903 Titan Court, Suite #15, Littleton, CO 80125 - USA

Value - Quality - Service



F1-T38x19 Metric Threads

Bonding Fasteners

Rotaloc International, LLC

Sample Image



As Shown: F1-T38x19-M6

F1

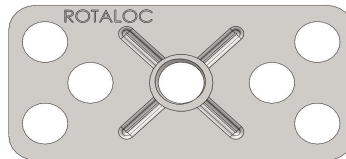
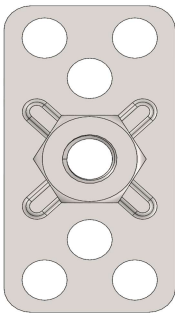
Female Hex Nut

T38x19

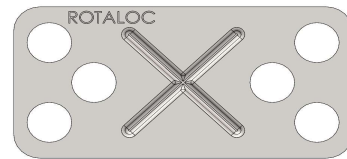
38x19 Millimeter Rectangular Baseplate

Example - Part Number

F1-T38x19-M6



Open (Thru)



Closed (Blind)

Thread - Inch

Thread	M4	M5	M6	M8	M10	M12	
Material	Mild Steel				Stainless Steel		
Plating	TZP (Trivalent Zinc)	Zinc-Nickel	Nano	E-Coat	Grades	303	304 316

Other plating and coating options available

* Grayed-out sizes are not recommended with shown baseplate

The F1 assembly adjoins a hex-style nut to one of our many baseplates. If a deeper thread length is needed we highly recommend using an F2 fitting which can be as deep as 2-inches or 50-millimeters

All plating and materials offered are RoHS and REACH Compliant

Availability

Many common sizes in stock. Call for availability.

A Rotaloc® Representative will be happy to discuss your specific application and product specifications.

Contact Rotaloc®

Contact Us:

Tel (303) 948-5434 or Toll Free (888) Rotaloc or (888)-768-2562
www.rotaloc.com | info@rotaloc.com

Address

Rotaloc International, LLC
 9903 Titan Court, Suite #15, Littleton, CO 80125 - USA

Value - Quality - Service



F1-T40x10 Metric Threads

Bonding Fasteners

Rotaloc International, LLC

Sample Image



As Shown: F1-T40x10-M5

F1

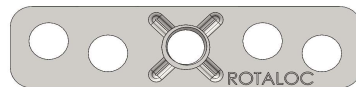
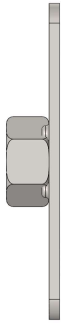
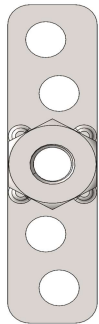
Female Hex Nut

T40x10

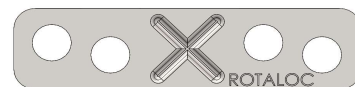
40x10 Millimeter Rectangular Baseplate

Example - Part Number

F1-T40x10-M5



Open (Thru)



Closed (Blind)

Thread - Inch

Thread	M4	M5	M6	M8	M10	M12	
Material	Mild Steel				Stainless Steel		
Plating	TZP (Trivalent Zinc)	Zinc-Nickel	Nano	E-Coat	Grades	303	304 316

Other plating and coating options available

* Grayed-out sizes are not recommended with shown baseplate

The F1 assembly adjoins a hex-style nut to one of our many baseplates. If a deeper thread length is needed we highly recommend using an F2 fitting which can be as deep as 2-inches or 50-millimeters

All plating and materials offered are RoHS and REACH Compliant

Availability

Many common sizes in stock. Call for availability.

A Rotaloc® Representative will be happy to discuss your specific application and product specifications.

Contact Rotaloc®

Contact Us:

Tel (303) 948-5434 or Toll Free (888) Rotaloc or (888)-768-2562
www.rotaloc.com | info@rotaloc.com

Address

Rotaloc International, LLC
 9903 Titan Court, Suite #15, Littleton, CO 80125 - USA

Value - Quality - Service



F1-T50x15 Metric Threads

Bonding Fasteners

Rotaloc International, LLC

Sample Image



As Shown: F1-T50x15-M5

F1

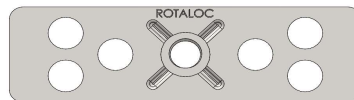
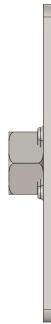
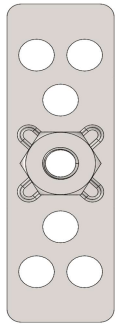
Female Hex Nut

T50x15

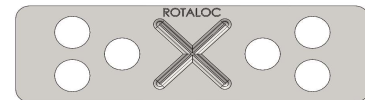
50x15 Millimeter Rectangular Baseplate

Example - Part Number

F1-T50x15-M5



Open (Thru)



Closed (Blind)

Thread - Inch

Thread	M4	M5	M6	M8	M10	M12	
Material	Mild Steel				Stainless Steel		
Plating	TZP (Trivalent Zinc)	Zinc-Nickel	Nano	E-Coat	Grades	303	304 316

Other plating and coating options available

* Grayed-out sizes are not recommended with shown baseplate

The F1 assembly adjoins a hex-style nut to one of our many baseplates. If a deeper thread length is needed we highly recommend using an F2 fitting which can be as deep as 2-inches or 50-millimeters

All plating and materials offered are RoHS and REACH Compliant

Availability

Many common sizes in stock. Call for availability.

A Rotaloc® Representative will be happy to discuss your specific application and product specifications.

Contact Rotaloc®

Contact Us:

Tel (303) 948-5434 or Toll Free (888) Rotaloc or (888)-768-2562
www.rotaloc.com | info@rotaloc.com

Address

Rotaloc International, LLC
 9903 Titan Court, Suite #15, Littleton, CO 80125 - USA

Value - Quality - Service

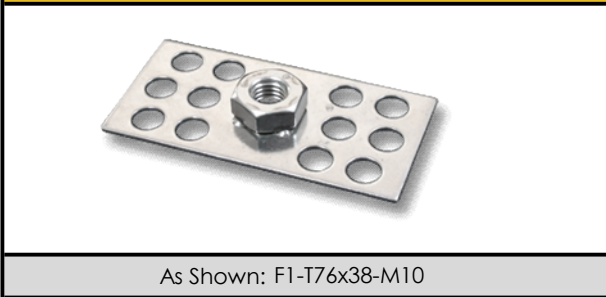


F1-T76x38 Metric Threads

Bonding Fasteners

Rotaloc International, LLC

Sample Image

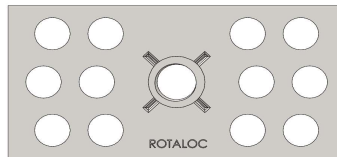
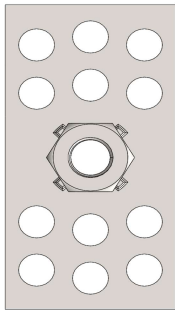


F1 Female Hex Nut

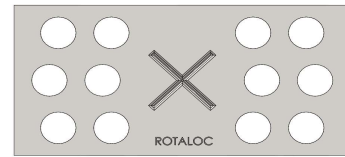
T76x38 76x38 Millimeter Rectangular Baseplate

Example - Part Number

F1-T76x38-M10



Open (Thru)



Closed (Blind)

Thread - Inch

Thread	M4	M5	M6	M8	M10	M12	
Material	Mild Steel				Stainless Steel		
Plating	TZP (Trivalent Zinc)	Zinc-Nickel	Nano	E-Coat	Grades	303	304 316
Other plating and coating options available					* Grayed-out sizes are not recommended with shown baseplate		

The F1 assembly adjoins a hex-style nut to one of our many baseplates. If a deeper thread length is needed we highly recommend using an F2 fitting which can be as deep as 2-inches or 50-millimeters

All plating and materials offered are RoHS and REACH Compliant

Availability

Many common sizes in stock. Call for availability.

A Rotaloc® Representative will be happy to discuss your specific application and product specifications.

Contact Rotaloc®

Contact Us:

Tel (303) 948-5434 or Toll Free (888) Rotaloc or (888)-768-2562
www.rotaloc.com | info@rotaloc.com

Address

Rotaloc International, LLC
 9903 Titan Court, Suite #15, Littleton, CO 80125 - USA

Value - Quality - Service



F1-HP44 Metric Threads

Bonding Fasteners

Rotaloc International, LLC

Sample Image



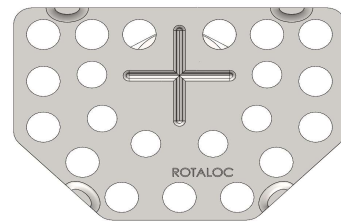
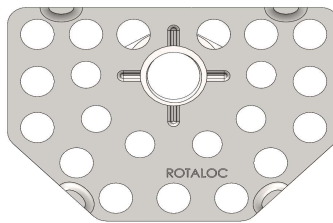
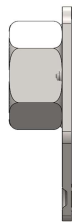
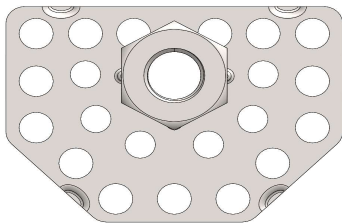
As Shown: F1-HP44-M8

F1 Female Hex Nut

HP44 44 Millimeter Homeplate Like Baseplate

Example - Part Number

F1-HP44-M8



Open (Thru)

Closed (Blind)

Thread - Inch

Thread	M4	M5	M6	M8	M10	M12	
Material	Mild Steel				Stainless Steel		
Plating	TZP (Trivalent Zinc)	Zinc-Nickel	Nano	E-Coat	Grades	303	304 316

Other plating and coating options available

* Grayed-out sizes are not recommended with shown baseplate

The F1 assembly adjoins a hex-style nut to one of our many baseplates. If a deeper thread length is needed we highly recommend using an F2 fitting which can be as deep as 2-inches or 50-millimeters

All plating and materials offered are RoHS and REACH Compliant

Availability

Many common sizes in stock. Call for availability.

A Rotaloc® Representative will be happy to discuss your specific application and product specifications.

Contact Rotaloc®

Contact Us:

Tel (303) 948-5434 or Toll Free (888) Rotaloc or (888)-768-2562
www.rotaloc.com | info@rotaloc.com

Address

Rotaloc International, LLC
 9903 Titan Court, Suite #15, Littleton, CO 80125 - USA

Value - Quality - Service