



F1-RB19 Inch Threads

Bonding Fasteners

Rotaloc International, LLC

Sample Image



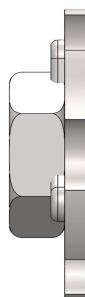
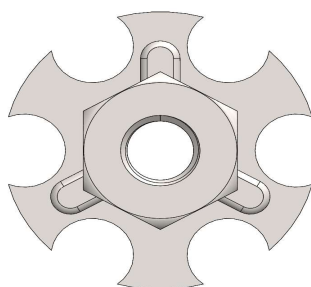
As Shown: F1-RB19-10-32

F1 Female Hex Nut

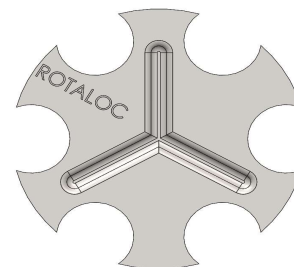
RB19 19 Millimeter Round Baseplate

Example Part Number

F1-RB19-10-32



Open (Thru)



Closed (Blind)

Thread - Inch

Line 1	4-40	6-32	8-32	10-24	10-32	1/4-20	1/4-28	
Line 2	5/16-18	3/8-16	7/16-20	1/2-13	5/8-11	3/4-10		
Material	Mild Steel				Stainless Steel			
Plating	TZP (Trivalent Zinc)	Zinc-Nickel	Nano	E-Coat	Grades	303	304	316

Other plating and coating options available

* Grayed-out sizes are not recommended with shown baseplate

The F1 assembly adjoins a hex-style nut to one of our many baseplates. If a deeper thread length is needed we highly recommend using an F2 fitting which can be as deep as 2-inches or 50-millimeters

All plating and materials offered are RoHS and REACH Compliant

Availability

Many common sizes in stock. Call for availability.

A Rotaloc® Representative will be happy to discuss your specific application and product specifications.

Contact Rotaloc®

Contact Us:

Tel (303) 948-5434 or Toll Free (888) Rotaloc or (888)-768-2562
www.rotaloc.com | info@rotaloc.com

Address

Rotaloc International, LLC
 9903 Titan Court, Suite #15, Littleton, CO 80125 - USA

Value - Quality - Service



F1-RB19 Inch Threads

Bonding Fasteners

Rotaloc International, LLC

Sample Image



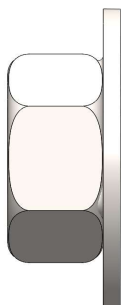
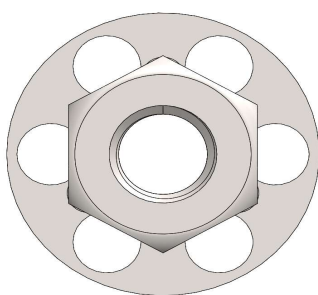
As Shown: F1-RB23-5/16-18

F1 Female Hex Nut

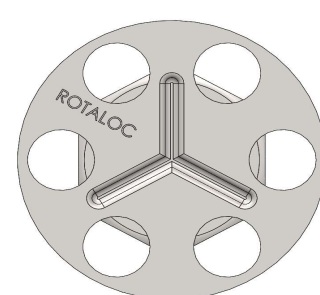
RB23 23 Millimeter Round Baseplate

Example - Part Number

F1-RB23-5/16-18



Open (Thru)



Closed (Blind)

Thread - Inch

Line 1	4-40	6-32	8-32	10-24	10-32	1/4-20	1/4-28	
Line 2	5/16-18	3/8-16	7/16-20	1/2-13	5/8-11	3/4-10		
Material	Mild Steel				Stainless Steel			
Plating	TZP (Trivalent Zinc)	Zinc-Nickel	Nano	E-Coat	Grades	303	304	316

Other plating and coating options available

* Grayed-out sizes are not recommended with shown baseplate

The F1 assembly adjoins a hex-style nut to one of our many baseplates. If a deeper thread length is needed we highly recommend using an F2 fitting which can be as deep as 2-inches or 50-millimeters

All plating and materials offered are RoHS and REACH Compliant

Availability

Many common sizes in stock. Call for availability.

A Rotaloc® Representative will be happy to discuss your specific application and product specifications.

Contact Rotaloc®

Contact Us:

Tel (303) 948-5434 or Toll Free (888) Rotaloc or (888)-768-2562
www.rotaloc.com | info@rotaloc.com

Address

Rotaloc International, LLC
 9903 Titan Court, Suite #15, Littleton, CO 80125 - USA

Value - Quality - Service



F1-RB19 Inch Threads

Bonding Fasteners

Rotaloc International, LLC

Sample Image



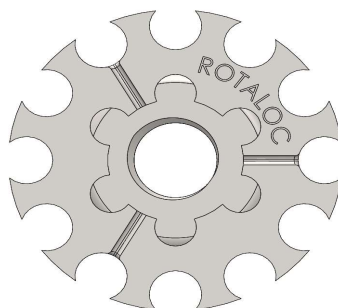
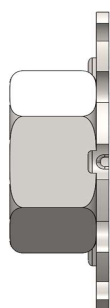
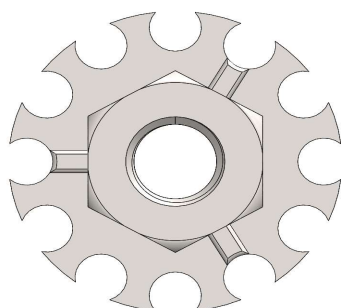
As Shown: F1-RB32-3/8-16

F1 Female Hex Nut

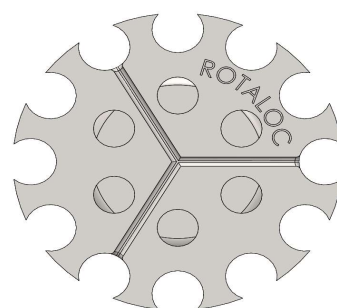
RB32 32 Millimeter Round Baseplate

Example - Part Number

F1-RB32-3/8-16



Open (Thru)



Closed (Blind)

Thread - Inch

Line 1	4-40	6-32	8-32	10-24	10-32	1/4-20	1/4-28	
Line 2	5/16-18	3/8-16	7/16-20	1/2-13	5/8-11	3/4-10		
Material	Mild Steel				Stainless Steel			
Plating	TZP (Trivalent Zinc)	Zinc-Nickel	Nano	E-Coat	Grades	303	304	316

Other plating and coating options available

* Grayed-out sizes are not recommended with shown baseplate

The F1 assembly adjoins a hex-style nut to one of our many baseplates. If a deeper thread length is needed we highly recommend using an F2 fitting which can be as deep as 2-inches or 50-millimeters

All plating and materials offered are RoHS and REACH Compliant

Availability

Many common sizes in stock. Call for availability.

A Rotaloc® Representative will be happy to discuss your specific application and product specifications.

Contact Rotaloc®

Contact Us:

Tel (303) 948-5434 or Toll Free (888) Rotaloc or (888)-768-2562
www.rotaloc.com | info@rotaloc.com

Address

Rotaloc International, LLC
 9903 Titan Court, Suite #15, Littleton, CO 80125 - USA

Value - Quality - Service



F1-RB19 Inch Threads

Bonding Fasteners

Rotaloc International, LLC

Sample Image



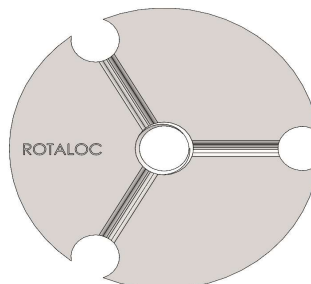
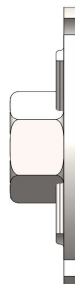
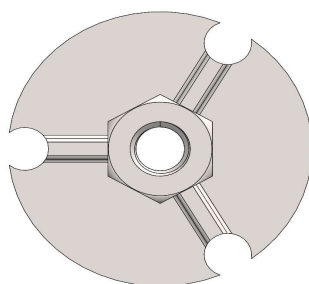
As Shown: F1-RB32#4-1/4-20

F1 Female Hex Nut

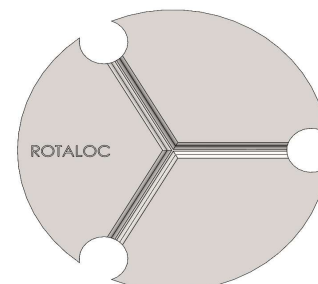
RB32#4 32 Millimeter Round Baseplate

Example - Part Number

F1-RB32#4-1/4-20



Open (Thru)



Closed (Blind)

Thread - Inch

Line 1	4-40	6-32	8-32	10-24	10-32	1/4-20	1/4-28	
Line 2	5/16-18	3/8-16	7/16-20	1/2-13	5/8-11	3/4-10		
Material	Mild Steel				Stainless Steel			
Plating	TZP (Trivalent Zinc)	Zinc-Nickel	Nano	E-Coat	Grades	303	304	316

Other plating and coating options available

* Grayed-out sizes are not recommended with shown baseplate

The F1 assembly adjoins a hex-style nut to one of our many baseplates. If a deeper thread length is needed we highly recommend using an F2 fitting which can be as deep as 2-inches or 50-millimeters

All plating and materials offered are RoHS and REACH Compliant

Availability

Many common sizes in stock. Call for availability.

A Rotaloc® Representative will be happy to discuss your specific application and product specifications.

Contact Rotaloc®

Contact Us:

Tel (303) 948-5434 or Toll Free (888) Rotaloc or (888)-768-2562
www.rotaloc.com | info@rotaloc.com

Address

Rotaloc International, LLC
 9903 Titan Court, Suite #15, Littleton, CO 80125 - USA

Value - Quality - Service



F1-RB19 Inch Threads

Bonding Fasteners

Rotaloc International, LLC

Sample Image



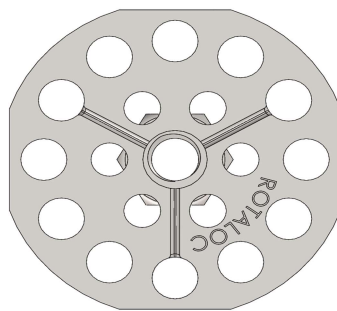
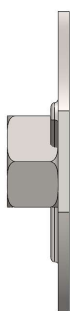
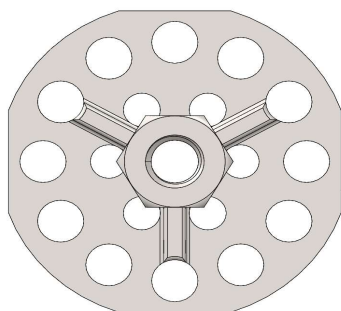
As Shown: F1-RB38-1/4-20

F1 Female Hex Nut

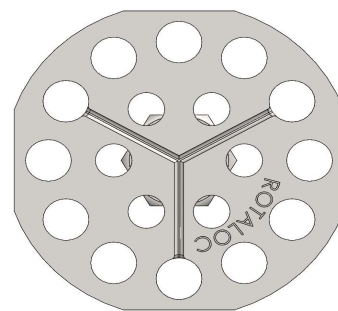
RB38 38 Millimeter Round Baseplate

Example - Part Number

F1-RB38-1/4-20



Open (Thru)



Closed (Blind)

Thread - Inch

Line 1	4-40	6-32	8-32	10-24	10-32	1/4-20	1/4-28	
Line 2	5/16-18	3/8-16	7/16-20	1/2-13	5/8-11	3/4-10		
Material	Mild Steel				Stainless Steel			
Plating	TZP (Trivalent Zinc)	Zinc-Nickel	Nano	E-Coat	Grades	303	304	316

Other plating and coating options available

* Grayed-out sizes are not recommended with shown baseplate

The F1 assembly adjoins a hex-style nut to one of our many baseplates. If a deeper thread length is needed we highly recommend using an F2 fitting which can be as deep as 2-inches or 50-millimeters

All plating and materials offered are RoHS and REACH Compliant

Availability

Many common sizes in stock. Call for availability.

A Rotaloc® Representative will be happy to discuss your specific application and product specifications.

Contact Rotaloc®

Contact Us:

Tel (303) 948-5434 or Toll Free (888) Rotaloc or (888)-768-2562
www.rotaloc.com | info@rotaloc.com

Address

Rotaloc International, LLC
 9903 Titan Court, Suite #15, Littleton, CO 80125 - USA

Value - Quality - Service



F1-RB19 Inch Threads

Bonding Fasteners

Rotaloc International, LLC

Sample Image



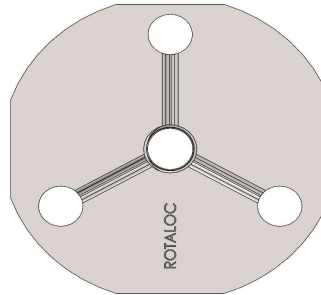
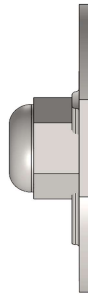
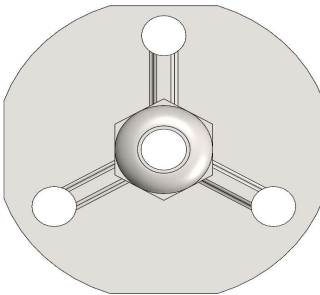
As Shown: F1-RB38#4-1/4-20

F1 Female Hex Nut

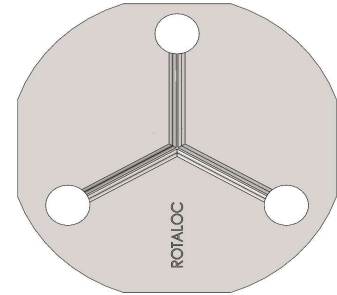
RB38#4 38 Millimeter Round Baseplate

Example - Part Number

F1-RB38#4-1/4-20



Open (Thru)



Closed (Blind)

Thread - Inch

Line 1	4-40	6-32	8-32	10-24	10-32	1/4-20	1/4-28	
Line 2	5/16-18	3/8-16	7/16-20	1/2-13	5/8-11	3/4-10		
Material	Mild Steel				Stainless Steel			
Plating	TZP (Trivalent Zinc)	Zinc-Nickel	Nano	E-Coat	Grades	303	304	316
								
Other plating and coating options available					* Grayed-out sizes are not recommended with shown baseplate			

The F1 assembly adjoins a hex-style nut to one of our many baseplates. If a deeper thread length is needed we highly recommend using an F2 fitting which can be as deep as 2-inches or 50-millimeters

All plating and materials offered are RoHS and REACH Compliant

Availability

Many common sizes in stock. Call for availability.

A Rotaloc® Representative will be happy to discuss your specific application and product specifications.

Contact Rotaloc®

Contact Us:

Tel (303) 948-5434 or Toll Free (888) Rotaloc or (888)-768-2562
www.rotaloc.com | info@rotaloc.com

Address

Rotaloc International, LLC
 9903 Titan Court, Suite #15, Littleton, CO 80125 - USA

Value - Quality - Service



F1-RB19 Inch Threads

Bonding Fasteners

Rotaloc International, LLC

Sample Image



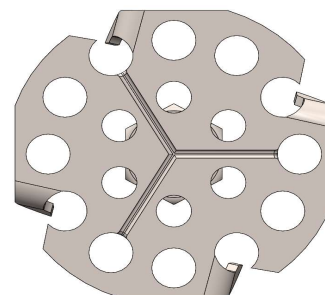
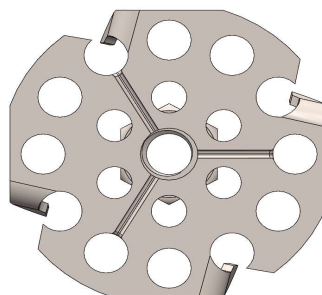
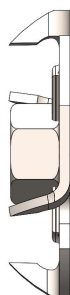
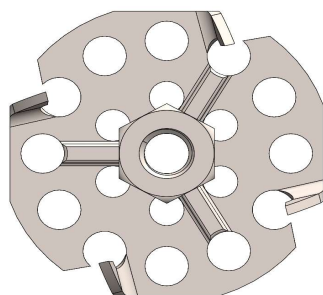
As Shown: F1-RB38Barb-5/16-18

F1 Female Hex Nut

RB38Barb 38 Millimeter Round Baseplate

Example - Part Number

F1-RB38Barb-5/16-18



Open (Thru)

Closed (Blind)

Thread - Inch

Line 1	4-40	6-32	8-32	10-24	10-32	1/4-20	1/4-28	
Line 2	5/16-18	3/8-16	7/16-20	1/2-13	5/8-11	3/4-10		
Material	Mild Steel				Stainless Steel			
Plating	TZP (Trivalent Zinc)	Zinc-Nickel	Nano	E-Coat	Grades	303	304	316

Other plating and coating options available

* Grayed-out sizes are not recommended with shown baseplate

The F1 assembly adjoins a hex-style nut to one of our many baseplates. If a deeper thread length is needed we highly recommend using an F2 fitting which can be as deep as 2-inches or 50-millimeters

All plating and materials offered are RoHS and REACH Compliant

Availability

Many common sizes in stock. Call for availability.

A Rotaloc® Representative will be happy to discuss your specific application and product specifications.

Contact Rotaloc®

Contact Us:

Tel (303) 948-5434 or Toll Free (888) Rotaloc or (888)-768-2562
www.rotaloc.com | info@rotaloc.com

Address

Rotaloc International, LLC
 9903 Titan Court, Suite #15, Littleton, CO 80125 - USA

Value - Quality - Service

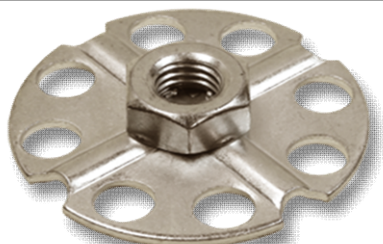


F1-RB19 Inch Threads

Bonding Fasteners

Rotaloc International, LLC

Sample Image



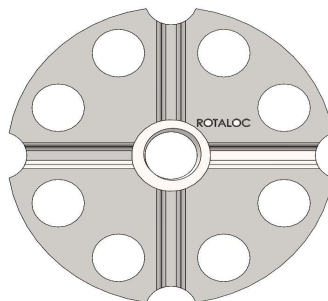
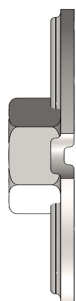
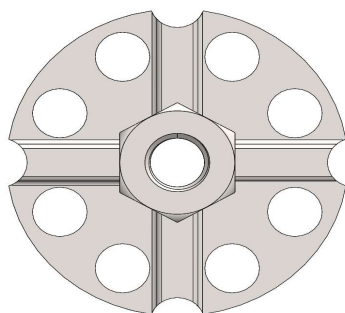
As Shown: F1-RB-50-5/16-16

F1 Female Hex Nut

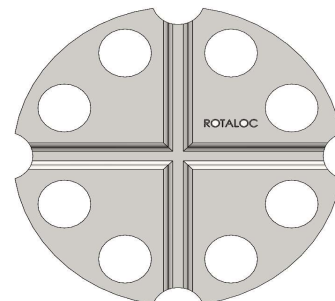
RB50 50 Millimeter Round Baseplate

Example - Part Number

F1-RB-50-5/16-16



Open (Thru)



Closed (Blind)

Thread - Inch

Line 1	4-40	6-32	8-32	10-24	10-32	1/4-20	1/4-28	
Line 2	5/16-18	3/8-16	7/16-20	1/2-13	5/8-11	3/4-10		
Material	Mild Steel				Stainless Steel			
Plating	TZP (Trivalent Zinc)	Zinc-Nickel	Nano	E-Coat	Grades	303	304	316

Other plating and coating options available

* Grayed-out sizes are not recommended with shown baseplate

The F1 assembly adjoins a hex-style nut to one of our many baseplates. If a deeper thread length is needed we highly recommend using an F2 fitting which can be as deep as 2-inches or 50-millimeters

All plating and materials offered are RoHS and REACH Compliant

Availability

Many common sizes in stock. Call for availability.

A Rotaloc® Representative will be happy to discuss your specific application and product specifications.

Contact Rotaloc®

Contact Us:

Tel (303) 948-5434 or Toll Free (888) Rotaloc or (888)-768-2562
www.rotaloc.com | info@rotaloc.com

Address

Rotaloc International, LLC
 9903 Titan Court, Suite #15, Littleton, CO 80125 - USA

Value - Quality - Service

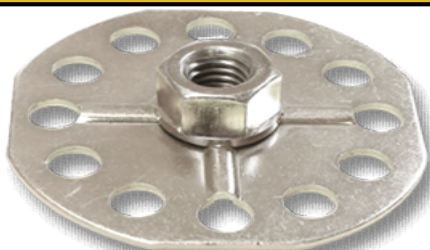


F1-RB76 Inch Threads

Bonding Fasteners

Rotaloc International, LLC

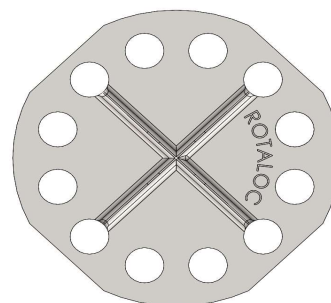
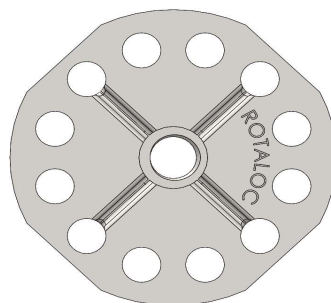
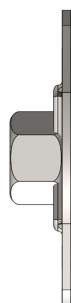
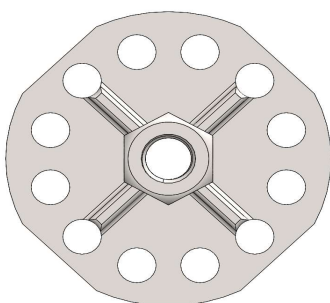
Sample Image



As Shown: F1-RB76-3/8-16

F1	Female Hex Nut
RB76	76 Millimeter Round Baseplate

Example - Part Number
F1-RB76-3/8-16



Open (Thru)

Closed (Blind)

Thread - Inch

Line 1	4-40	6-32	8-32	10-24	10-32	1/4-20	1/4-28	
Line 2	5/16-18	3/8-16	7/16-20	1/2-13	5/8-11	3/4-10		
Material	Mild Steel				Stainless Steel			
Plating	TZP (Trivalent Zinc)	Zinc-Nickel	Nano	E-Coat	Grades	303	304	316

Other plating and coating options available

* Grayed-out sizes are not recommended with shown baseplate

The F1 assembly adjoins a hex-style nut to one of our many baseplates. If a deeper thread length is needed we highly recommend using an F2 fitting which can be as deep as 2-inches or 50-millimeters

All plating and materials offered are RoHS and REACH Compliant

Availability

Many common sizes in stock. Call for availability.

A Rotaloc® Representative will be happy to discuss your specific application and product specifications.

Contact Rotaloc®

Contact Us:

Tel (303) 948-5434 or Toll Free (888) Rotaloc or (888)-768-2562
www.rotaloc.com | info@rotaloc.com

Address

Rotaloc International, LLC
9903 Titan Court, Suite #15, Littleton, CO 80125 - USA

Value - Quality - Service



F1-SB15 Inch Threads

Bonding Fasteners

Rotaloc International, LLC

Sample Image



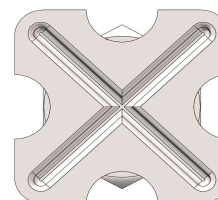
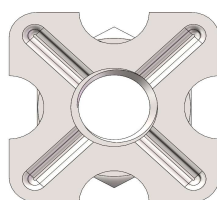
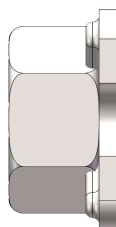
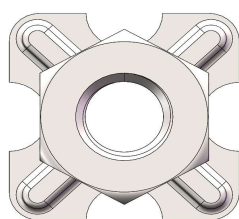
As Shown: F1-SB15-1/4-20

F1 Female Hex Nut

SB15 15 Millimeter Square Baseplate

Example - Part Number

F1-SB15-1/4-20



Open (Thru)

Closed (Blind)

Thread - Inch

Line 1	4-40	6-32	8-32	10-24	10-32	1/4-20	1/4-28	
Line 2	5/16-18	3/8-16	7/16-20	1/2-13	5/8-11	3/4-10		
Material	Mild Steel				Stainless Steel			
Plating	TZP (Trivalent Zinc)	Zinc-Nickel	Nano	E-Coat	Grades	303	304	316

Other plating and coating options available

* Grayed-out sizes are not recommended with shown baseplate

The F1 assembly adjoins a hex-style nut to one of our many baseplates. If a deeper thread length is needed we highly recommend using an F2 fitting which can be as deep as 2-inches or 50-millimeters

All plating and materials offered are RoHS and REACH Compliant

Availability

Many common sizes in stock. Call for availability.

A Rotaloc® Representative will be happy to discuss your specific application and product specifications.

Contact Rotaloc®

Contact Us:

Tel (303) 948-5434 or Toll Free (888) Rotaloc or (888)-768-2562
www.rotaloc.com | info@rotaloc.com

Address

Rotaloc International, LLC
 9903 Titan Court, Suite #15, Littleton, CO 80125 - USA

Value - Quality - Service



F1-SB30 Inch Threads

Bonding Fasteners

Rotaloc International, LLC

Sample Image



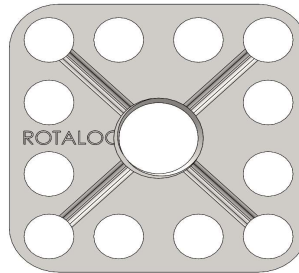
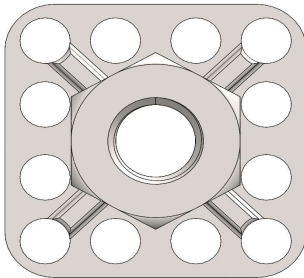
As Shown: F1-SB30-3/8-16

F1 Female Hex Nut

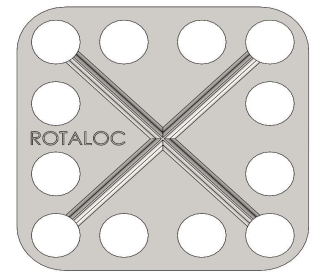
SB30 30 Millimeter Square Baseplate

Example - Part Number

F1-SB30-3/8-16



Open (Thru)



Closed (Blind)

Thread - Inch

Line 1	4-40	6-32	8-32	10-24	10-32	1/4-20	1/4-28	
Line 2	5/16-18	3/8-16	7/16-20	1/2-13	5/8-11	3/4-10		
Material	Mild Steel				Stainless Steel			
Plating	TZP (Trivalent Zinc)	Zinc-Nickel	Nano	E-Coat	Grades	303	304	316

Other plating and coating options available

* Grayed-out sizes are not recommended with shown baseplate

The F1 assembly adjoins a hex-style nut to one of our many baseplates. If a deeper thread length is needed we highly recommend using an F2 fitting which can be as deep as 2-inches or 50-millimeters

All plating and materials offered are RoHS and REACH Compliant

Availability

Many common sizes in stock. Call for availability.

A Rotaloc® Representative will be happy to discuss your specific application and product specifications.

Contact Rotaloc®

Contact Us:

Tel (303) 948-5434 or Toll Free (888) Rotaloc or (888)-768-2562
www.rotaloc.com | info@rotaloc.com

Address

Rotaloc International, LLC
 9903 Titan Court, Suite #15, Littleton, CO 80125 - USA

Value - Quality - Service



F1-SB32 Inch Threads

Bonding Fasteners

Rotaloc International, LLC

Sample Image



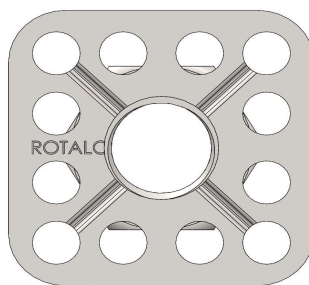
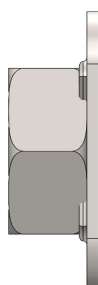
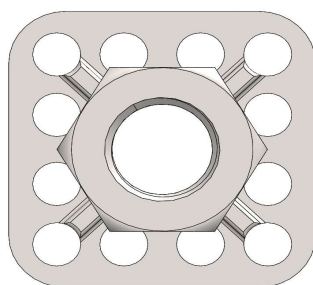
As Shown: F1-SB32-1/2-13

F1 Female Hex Nut

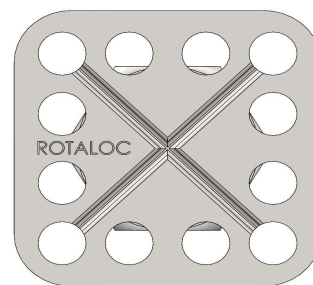
SB32 32 Millimeter Square Baseplate

Example - Part Number

F1-SB32-1/2-13



Open (Thru)



Closed (Blind)

Thread - Inch

Line 1	4-40	6-32	8-32	10-24	10-32	1/4-20	1/4-28	
Line 2	5/16-18	3/8-16	7/16-20	1/2-13	5/8-11	3/4-10		
Material	Mild Steel				Stainless Steel			
Plating	TZP (Trivalent Zinc)	Zinc-Nickel	Nano	E-Coat	Grades	303	304	316

Other plating and coating options available

* Grayed-out sizes are not recommended with shown baseplate

The F1 assembly adjoins a hex-style nut to one of our many baseplates. If a deeper thread length is needed we highly recommend using an F2 fitting which can be as deep as 2-inches or 50-millimeters

All plating and materials offered are RoHS and REACH Compliant

Availability

Many common sizes in stock. Call for availability.

A Rotaloc® Representative will be happy to discuss your specific application and product specifications.

Contact Rotaloc®

Contact Us:

Tel (303) 948-5434 or Toll Free (888) Rotaloc or (888)-768-2562
www.rotaloc.com | info@rotaloc.com

Address

Rotaloc International, LLC
 9903 Titan Court, Suite #15, Littleton, CO 80125 - USA

Value - Quality - Service

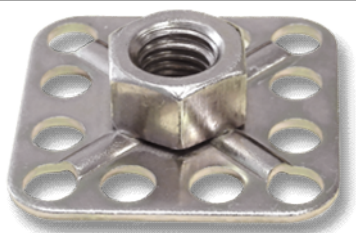


F1-SB50 Inch Threads

Bonding Fasteners

Rotaloc International, LLC

Sample Image



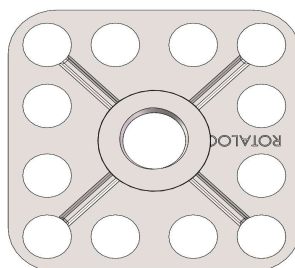
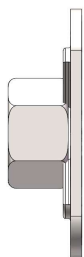
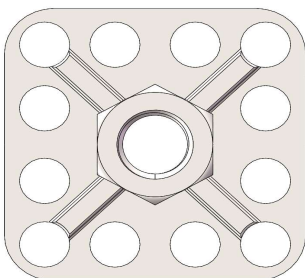
As Shown: F1-SB50-1/2-13

F1 Female Hex Nut

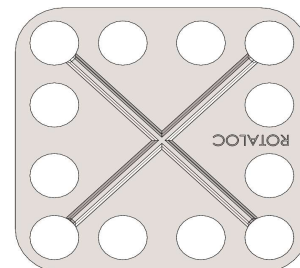
SB50 50 Millimeter Square Baseplate

Example - Part Number

F1-SB50-1/2-13



Open (Thru)



Closed (Blind)

Thread - Inch

Line 1	4-40	6-32	8-32	10-24	10-32	1/4-20	1/4-28	
Line 2	5/16-18	3/8-16	7/16-20	1/2-13	5/8-11	3/4-10		
Material	Mild Steel				Stainless Steel			
Plating	TZP (Trivalent Zinc)	Zinc-Nickel	Nano	E-Coat	Grades	303	304	316

Other plating and coating options available

* Grayed-out sizes are not recommended with shown baseplate

The F1 assembly adjoins a hex-style nut to one of our many baseplates. If a deeper thread length is needed we highly recommend using an F2 fitting which can be as deep as 2-inches or 50-millimeters

All plating and materials offered are RoHS and REACH Compliant

Availability

Many common sizes in stock. Call for availability.

A Rotaloc® Representative will be happy to discuss your specific application and product specifications.

Contact Rotaloc®

Contact Us:

Tel (303) 948-5434 or Toll Free (888) Rotaloc or (888)-768-2562
www.rotaloc.com | info@rotaloc.com

Address

Rotaloc International, LLC
 9903 Titan Court, Suite #15, Littleton, CO 80125 - USA

Value - Quality - Service



F1-T15x11 Inch Threads

Bonding Fasteners

Rotaloc International, LLC

Sample Image



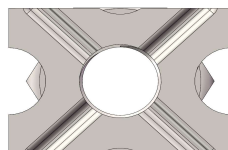
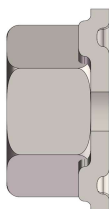
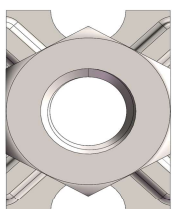
As Shown: F1-T15x11-1/4-20

F1 Female Hex Nut

T15x11 15x11 Millimeter Rectangular Baseplate

Example - Part Number

F1-T15x11-1/4-20



Open (Thru)

Closed (Blind)

Thread - Inch

Line 1	4-40	6-32	8-32	10-24	10-32	1/4-20	1/4-28	
Line 2	5/16-18	3/8-16	7/16-20	1/2-13	5/8-11	3/4-10		
Material	Mild Steel				Stainless Steel			
Plating	TZP (Trivalent Zinc)	Zinc-Nickel	Nano	E-Coat	Grades	303	304	316

Other plating and coating options available

* Grayed-out sizes are not recommended with shown baseplate

The F1 assembly adjoins a hex-style nut to one of our many baseplates. If a deeper thread length is needed we highly recommend using an F2 fitting which can be as deep as 2-inches or 50-millimeters

All plating and materials offered are RoHS and REACH Compliant

Availability

Many common sizes in stock. Call for availability.

A Rotaloc® Representative will be happy to discuss your specific application and product specifications.

Contact Rotaloc®

Contact Us:

Tel (303) 948-5434 or Toll Free (888) Rotaloc or (888)-768-2562
www.rotaloc.com | info@rotaloc.com

Address

Rotaloc International, LLC
 9903 Titan Court, Suite #15, Littleton, CO 80125 - USA

Value - Quality - Service



F1-T24x11.5 Inch Threads

Bonding Fasteners

Rotaloc International, LLC

Sample Image



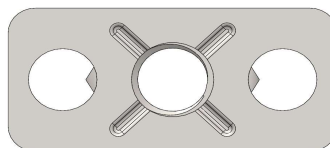
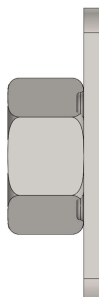
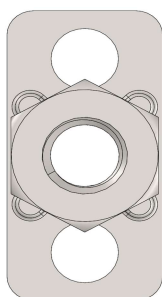
As Shown: F1-T24x11.5-1/4-20

F1 Female Hex Nut

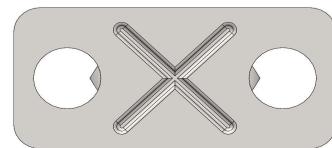
T24x11.5 24x11.5 Millimeter Rectangular Baseplate

Example - Part Number

F1-T24x11.5-1/4-20



Open (Thru)



Closed (Blind)

Thread - Inch

Line 1	4-40	6-32	8-32	10-24	10-32	1/4-20	1/4-28	
Line 2	5/16-18	3/8-16	7/16-20	1/2-13	5/8-11	3/4-10		
Material	Mild Steel				Stainless Steel			
Plating	TZP (Trivalent Zinc)	Zinc-Nickel	Nano	E-Coat	Grades	303	304	316

Other plating and coating options available

* Grayed-out sizes are not recommended with shown baseplate

The F1 assembly adjoins a hex-style nut to one of our many baseplates. If a deeper thread length is needed we highly recommend using an F2 fitting which can be as deep as 2-inches or 50-millimeters

All plating and materials offered are RoHS and REACH Compliant

Availability

Many common sizes in stock. Call for availability.

A Rotaloc® Representative will be happy to discuss your specific application and product specifications.

Contact Rotaloc®

Contact Us:

Tel (303) 948-5434 or Toll Free (888) Rotaloc or (888)-768-2562
www.rotaloc.com | info@rotaloc.com

Address

Rotaloc International, LLC
 9903 Titan Court, Suite #15, Littleton, CO 80125 - USA

Value - Quality - Service



F1-T38x11.5 Inch Threads

Bonding Fasteners

Rotaloc International, LLC

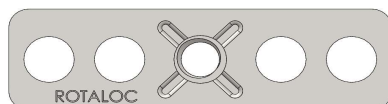
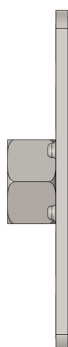
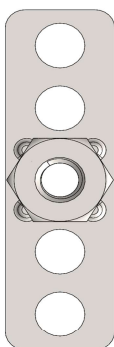
Sample Image



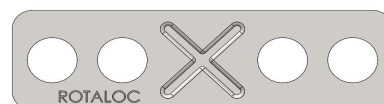
As Shown: F1-T38x11.5-10-24

F1	Female Hex Nut
T38x11.5	38x11.5 Millimeter Rectangular Baseplate

	Example - Part Number
	F1-T38x11.5-10-24



Open (Thru)



Closed (Blind)

Thread - Inch							
Line 1	4-40	6-32	8-32	10-24	10-32	1/4-20	1/4-28
Line 2	5/16-18	3/8-16	7/16-20	1/2-13	5/8-11	3/4-10	
Material	Mild Steel				Stainless Steel		
Plating	TZP (Trivalent Zinc)	Zinc-Nickel	Nano	E-Coat	Grades	303	304 316
Other plating and coating options available				* Grayed-out sizes are not recommended with shown baseplate			

The F1 assembly adjoins a hex-style nut to one of our many baseplates. If a deeper thread length is needed we highly recommend using an F2 fitting which can be as deep as 2-inches or 50-millimeters

All plating and materials offered are RoHS and REACH Compliant

Availability	Many common sizes in stock. Call for availability.
---------------------	--

A Rotaloc® Representative will be happy to discuss your specific application and product specifications.

Contact Rotaloc®	
Contact Us: Tel (303) 948-5434 or Toll Free (888) Rotaloc or (888)-768-2562 www.rotaloc.com info@rotaloc.com	Address Rotaloc International, LLC 9903 Titan Court, Suite #15, Littleton, CO 80125 - USA
Value - Quality - Service	



F1-T38x15 Inch Threads

Bonding Fasteners

Rotaloc International, LLC

Sample Image



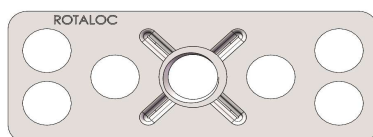
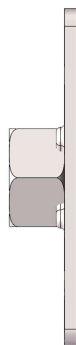
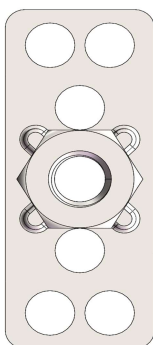
As Shown: F1-T38x15-1/4-20

F1 Female Hex Nut

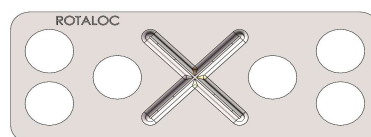
T38x15 38x15 Millimeter Rectangular Baseplate

Example - Part Number

F1-T38x15-1/4-20



Open (Thru)



Closed (Blind)

Thread - Inch

Line 1	4-40	6-32	8-32	10-24	10-32	1/4-20	1/4-28	
Line 2	5/16-18	3/8-16	7/16-20	1/2-13	5/8-11	3/4-10		
Material	Mild Steel				Stainless Steel			
Plating	TZP (Trivalent Zinc)	Zinc-Nickel	Nano	E-Coat	Grades	303	304	316

Other plating and coating options available

* Grayed-out sizes are not recommended with shown baseplate

The F1 assembly adjoins a hex-style nut to one of our many baseplates. If a deeper thread length is needed we highly recommend using an F2 fitting which can be as deep as 2-inches or 50-millimeters

All plating and materials offered are RoHS and REACH Compliant

Availability

Many common sizes in stock. Call for availability.

A Rotaloc® Representative will be happy to discuss your specific application and product specifications.

Contact Rotaloc®

Contact Us:

Tel (303) 948-5434 or Toll Free (888) Rotaloc or (888)-768-2562
www.rotaloc.com | info@rotaloc.com

Address

Rotaloc International, LLC
 9903 Titan Court, Suite #15, Littleton, CO 80125 - USA

Value - Quality - Service

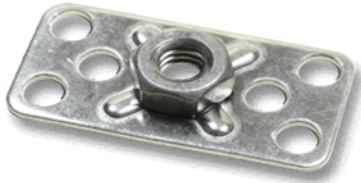


F1-T38x19 Inch Threads

Bonding Fasteners

Rotaloc International, LLC

Sample Image



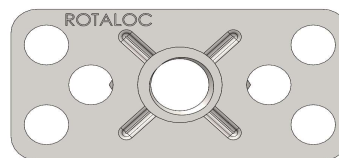
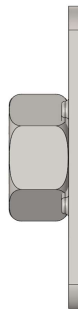
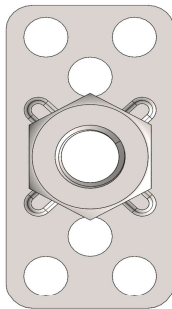
As Shown: F1-T38x19-5/16-18

F1 Female Hex Nut

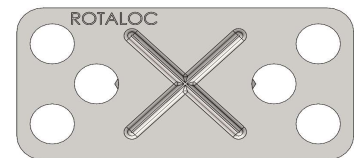
T38x19 38x19 Millimeter Rectangular Baseplate

Example - Part Number

F1-T38x19-5/16-18



Open (Thru)



Closed (Blind)

Thread - Inch

Line 1	4-40	6-32	8-32	10-24	10-32	1/4-20	1/4-28	
Line 2	5/16-18	3/8-16	7/16-20	1/2-13	5/8-11	3/4-10		
Material	Mild Steel				Stainless Steel			
Plating	TZP (Trivalent Zinc)	Zinc-Nickel	Nano	E-Coat	Grades	303	304	316
								
Other plating and coating options available					* Grayed-out sizes are not recommended with shown baseplate			

The F1 assembly adjoins a hex-style nut to one of our many baseplates. If a deeper thread length is needed we highly recommend using an F2 fitting which can be as deep as 2-inches or 50-millimeters

All plating and materials offered are RoHS and REACH Compliant

Availability

Many common sizes in stock. Call for availability.

A Rotaloc® Representative will be happy to discuss your specific application and product specifications.

Contact Rotaloc®

Contact Us:

Tel (303) 948-5434 or Toll Free (888) Rotaloc or (888)-768-2562
www.rotaloc.com | info@rotaloc.com

Address

Rotaloc International, LLC
 9903 Titan Court, Suite #15, Littleton, CO 80125 - USA

Value - Quality - Service



F1-T40x10 Inch Threads

Bonding Fasteners

Rotaloc International, LLC

Sample Image



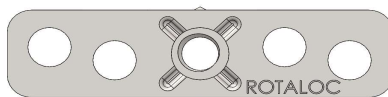
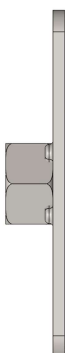
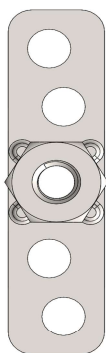
As Shown: F1-T40x10-10-24

F1 Female Hex Nut

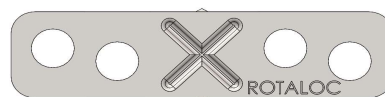
T40x10 40x10 Millimeter Rectangular Baseplate

Example - Part Number

F1-T40x10-10-24



Open (Thru)



Closed (Blind)

Thread - Inch

Line 1	4-40	6-32	8-32	10-24	10-32	1/4-20	1/4-28	
Line 2	5/16-18	3/8-16	7/16-20	1/2-13	5/8-11	3/4-10		
Material	Mild Steel				Stainless Steel			
Plating	TZP (Trivalent Zinc)	Zinc-Nickel	Nano	E-Coat	Grades	303	304	316

Other plating and coating options available

* Grayed-out sizes are not recommended with shown baseplate

The F1 assembly adjoins a hex-style nut to one of our many baseplates. If a deeper thread length is needed we highly recommend using an F2 fitting which can be as deep as 2-inches or 50-millimeters

All plating and materials offered are RoHS and REACH Compliant

Availability

Many common sizes in stock. Call for availability.

A Rotaloc® Representative will be happy to discuss your specific application and product specifications.

Contact Rotaloc®

Contact Us:

Tel (303) 948-5434 or Toll Free (888) Rotaloc or (888)-768-2562
www.rotaloc.com | info@rotaloc.com

Address

Rotaloc International, LLC
 9903 Titan Court, Suite #15, Littleton, CO 80125 - USA

Value - Quality - Service



F1-T50x15 Inch Threads

Bonding Fasteners

Rotaloc International, LLC

Sample Image



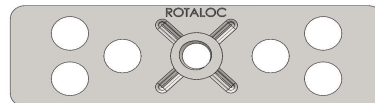
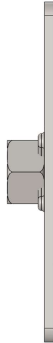
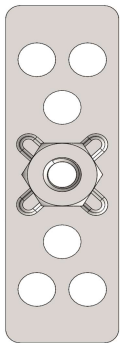
As Shown: F1-T50x15-10-24

F1 Female Hex Nut

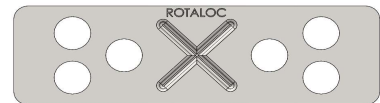
T50x15 50x15 Millimeter Rectangular Baseplate

Example - Part Number

F1-T50x15-10-24



Open (Thru)



Closed (Blind)

Thread - Inch

Line 1	4-40	6-32	8-32	10-24	10-32	1/4-20	1/4-28	
Line 2	5/16-18	3/8-16	7/16-20	1/2-13	5/8-11	3/4-10		
Material	Mild Steel				Stainless Steel			
Plating	TZP (Trivalent Zinc)	Zinc-Nickel	Nano	E-Coat	Grades	303	304	316
								
Other plating and coating options available					* Grayed-out sizes are not recommended with shown baseplate			

The F1 assembly adjoins a hex-style nut to one of our many baseplates. If a deeper thread length is needed we highly recommend using an F2 fitting which can be as deep as 2-inches or 50-millimeters

All plating and materials offered are RoHS and REACH Compliant

Availability

Many common sizes in stock. Call for availability.

A Rotaloc® Representative will be happy to discuss your specific application and product specifications.

Contact Rotaloc®

Contact Us:

Tel (303) 948-5434 or Toll Free (888) Rotaloc or (888)-768-2562
www.rotaloc.com | info@rotaloc.com

Address

Rotaloc International, LLC
 9903 Titan Court, Suite #15, Littleton, CO 80125 - USA

Value - Quality - Service

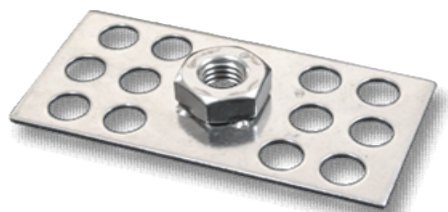


F1-T76x38 Inch Threads

Bonding Fasteners

Rotaloc International, LLC

Sample Image



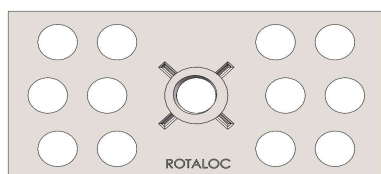
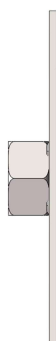
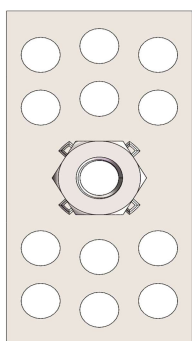
As Shown: F1-T76x38-3/8-16

F1 Female Hex Nut

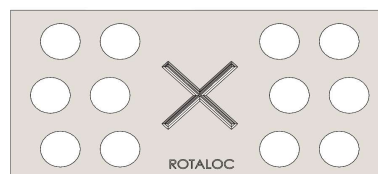
T76x38 76x38 Millimeter Rectangular Baseplate

Example - Part Number

F1-T76x38-3/8-16







Open (Thru)



Closed (Blind)

Thread - Inch

Line 1	4-40	6-32	8-32	10-24	10-32	1/4-20	1/4-28	
Line 2	5/16-18	3/8-16	7/16-20	1/2-13	5/8-11	3/4-10		
Material	Mild Steel				Stainless Steel			
Plating	TZP (Trivalent Zinc)	Zinc-Nickel	Nano	E-Coat	Grades	303	304	316
								
Other plating and coating options available					* Grayed-out sizes are not recommended with shown baseplate			

The F1 assembly adjoins a hex-style nut to one of our many baseplates. If a deeper thread length is needed we highly recommend using an F2 fitting which can be as deep as 2-inches or 50-millimeters

All plating and materials offered are RoHS and REACH Compliant

Availability

Many common sizes in stock. Call for availability.

A Rotaloc® Representative will be happy to discuss your specific application and product specifications.

Contact Rotaloc®

Contact Us:

Tel (303) 948-5434 or Toll Free (888) Rotaloc or (888)-768-2562
www.rotaloc.com | info@rotaloc.com

Address

Rotaloc International, LLC
 9903 Titan Court, Suite #15, Littleton, CO 80125 - USA

Value - Quality - Service



F1-HP44 Inch Threads

Bonding Fasteners

Rotaloc International, LLC

Sample Image



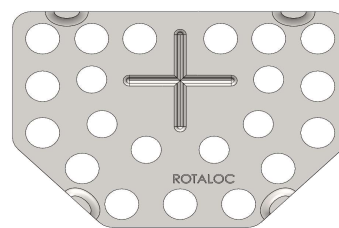
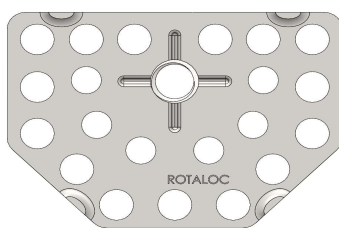
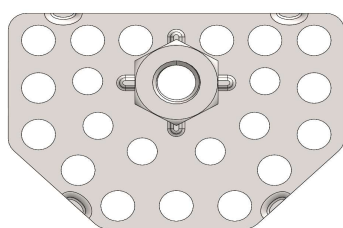
As Shown: F1-HP44-1/4-20

F1 Female Hex Nut

HP44 44 Millimeter Homeplate Like Baseplate

Example - Part Number

F1-HP44-1/4-20



Open (Thru)

Closed (Blind)

Thread - Inch

Line 1	4-40	6-32	8-32	10-24	10-32	1/4-20	1/4-28	
Line 2	5/16-18	3/8-16	7/16-20	1/2-13	5/8-11	3/4-10		
Material	Mild Steel				Stainless Steel			
Plating	TZP (Trivalent Zinc)	Zinc-Nickel	Nano	E-Coat	Grades	303	304	316

Other plating and coating options available

* Grayed-out sizes are not recommended with shown baseplate

The F1 assembly adjoins a hex-style nut to one of our many baseplates. If a deeper thread length is needed we highly recommend using an F2 fitting which can be as deep as 2-inches or 50-millimeters

All plating and materials offered are RoHS and REACH Compliant

Availability

Many common sizes in stock. Call for availability.

A Rotaloc® Representative will be happy to discuss your specific application and product specifications.

Contact Rotaloc®

Contact Us:

Tel (303) 948-5434 or Toll Free (888) Rotaloc or (888)-768-2562
www.rotaloc.com | info@rotaloc.com

Address

Rotaloc International, LLC
 9903 Titan Court, Suite #15, Littleton, CO 80125 - USA

Value - Quality - Service