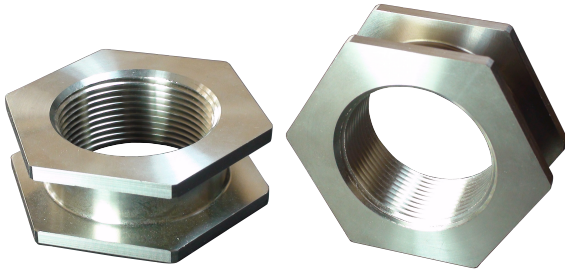
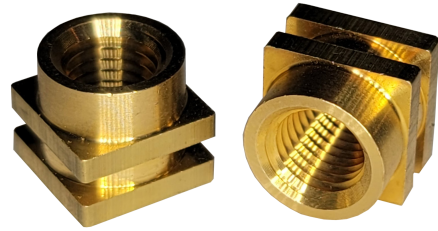


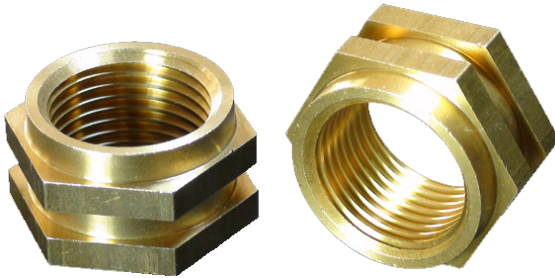
Stainless Steel NPT



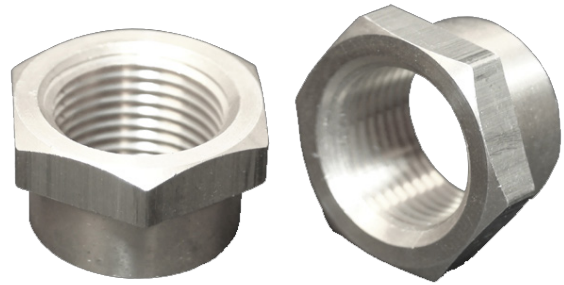
Brass Square NPT



Brass Offset NPT



Aluminum Single-Hex



Steel F2-Roto NPT



### Common Materials

SS - Stainless Steel (SS)

ST - Zinc-Plated Steel (ST)

AL - Aluminum (AL)

BR - Brass (BR)

Other material and coating options available.  
Contact Rotaloc today to discuss.

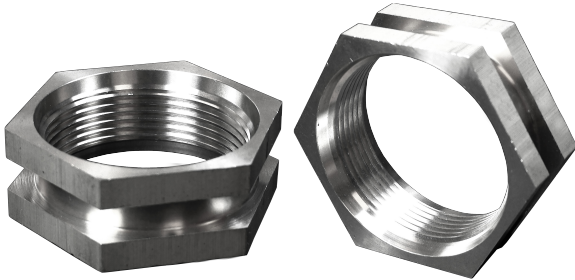
### NPT Hex Insert Sizing Chart\*

\*Additional Sizes Available

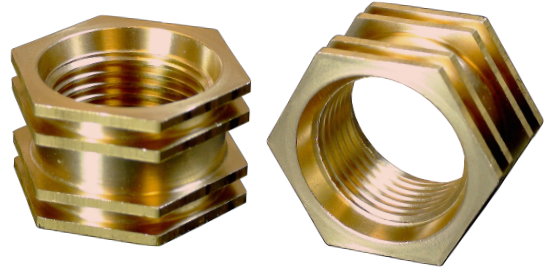
Thread Size	1/8"	1/4"	3/8"	1/2"	3/4"	1"	1-1/4"	1-1/2"	2"
Across Flat Dim. (A/F)	0.625"	0.687"	0.812"	1.00"	1.375"	1.75"	2.25"	2.50"	3.00"
Overall Length (OAL)	0.625"	0.687"	0.812"	1.00"	1.375"	1.75"	2.25"	2.50"	3.00"

Rotaloc® offers a wide range of standard and custom NPT Inserts.  
Turn this page over for SAE options.

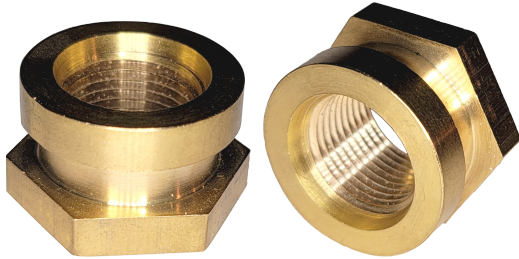
Stainless Double-Port



Brass 4-Hex SAE



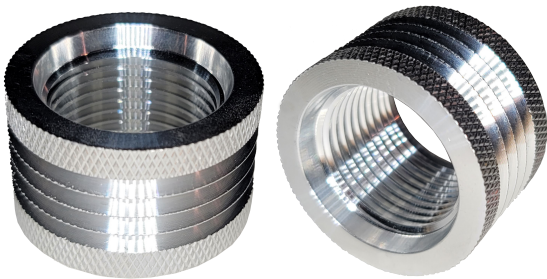
Brass Hybrid SAE



Steel Single-Port



Alum. Round Knurled



### Common Materials

SS - Stainless Steel (SS)

ST - Zinc-Plated Steel (ST)

AL - Aluminum (AL)

BR - Brass (BR)

Other material and coating options available.  
Contact Rotaloc today to discuss.

### SAE Hex Insert Sizing Chart\*

\*Additional Sizes Available

Thread Size	5/16-24	7/16-20	9/16-18	3/4-16	7/8-14	1 <sup>1</sup> / <sub>16</sub> -12	1 <sup>5</sup> / <sub>16</sub> -12	1 <sup>5</sup> / <sub>8</sub> -12	1 <sup>7</sup> / <sub>8</sub> -12	2 <sup>1</sup> / <sub>2</sub> -12
Dash Size	SAE-2	SAE-4	SAE-6	SAE-8	SAE-10	SAE-12	SAE-16	SAE-20	SAE-24	SAE-32
Across Flat Dim. (A/F)	0.500"	0.625"	0.750"	1.125"	1.125"	1.378"	1.772"	1.875"	2.165"	2.875"
Overall Length (OAL)	.500"	0.625"	0.750"	0.866"	0.866"	0.866"	0.875"	0.930"	0.866"	0.930"

Rotaloc® offers a wide range of standard and custom SAE Inserts.  
Turn this page over for NPT options.