



M1-RB19 Metric Thread

Bonding Fasteners

Rotaloc International, LLC

Sample Image



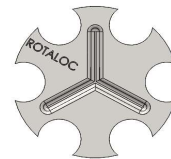
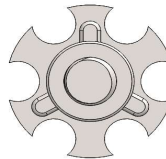
As Shown: M1-RB19-M5x40

M1 Male Threaded Bolt Stud

RB19 19 Millimeter Round Baseplate

Example - Part Number

M1-RB19-M5x40



Thread	Common Thread Lengths - Inch									
M4	12mm	15mm	16mm	20mm	25mm	35mm	40mm	50mm	60mm	75mm
M5	12mm	15mm	16mm	20mm	25mm	35mm	40mm	50mm	60mm	75mm
M6	12mm	15mm	16mm	20mm	25mm	35mm	40mm	50mm	60mm	75mm
M8	12mm	15mm	16mm	20mm	25mm	35mm	40mm	50mm	60mm	75mm
M10	12mm	15mm	16mm	20mm	25mm	35mm	40mm	50mm	60mm	75mm
M12	12mm	15mm	16mm	20mm	25mm	35mm	40mm	50mm	60mm	75mm

* Grayed-out sizes are not recommended with shown baseplate

Plating	TZP (Trivalent Zinc)	Zinc-Nickel	Nano	E-Coat	Grades	303	304	316

Other plating and coating options available

* Grayed-out sizes are not recommended with shown baseplate

All plating and materials offered are RoHS and REACH Compliant

Availability

Many common sizes in stock. Call for availability.

A Rotaloc® Representative will be happy to discuss your specific application and product specifications.

Contact Rotaloc®

Contact Us:

Tel (303) 948-5434 or Toll Free (888) Rotaloc or (888)-768-2562
www.rotaloc.com | info@rotaloc.com

Address

Rotaloc International, LLC
 9903 Titan Court, Suite # 15, Littleton, CO 80125 - USA

Value - Quality - Service



M1-RB23 Metric Thread

Bonding Fasteners

Rotaloc International, LLC

Sample Image



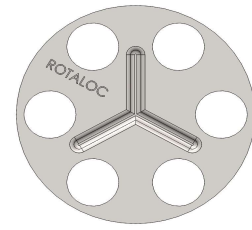
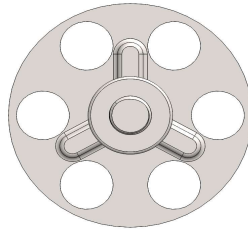
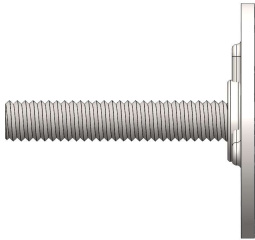
As Shown: M1-RB23-M4x20

M1 Male Threaded Bolt Stud

RB23 23 Millimeter Round Baseplate

Example - Part Number

M1-RB23-M4x20



Thread	Common Thread Lengths - Inch									
M4	12mm	15mm	16mm	20mm	25mm	35mm	40mm	50mm	60mm	75mm
M5	12mm	15mm	16mm	20mm	25mm	35mm	40mm	50mm	60mm	75mm
M6	12mm	15mm	16mm	20mm	25mm	35mm	40mm	50mm	60mm	75mm
M8	12mm	15mm	16mm	20mm	25mm	35mm	40mm	50mm	60mm	75mm
M10	12mm	15mm	16mm	20mm	25mm	35mm	40mm	50mm	60mm	75mm
M12	12mm	15mm	16mm	20mm	25mm	35mm	40mm	50mm	60mm	75mm

* Grayed-out sizes are not recommended with shown baseplate

Plating	TZP (Trivalent Zinc)	Zinc-Nickel	Nano	E-Coat	Grades	303	304	316
Other plating and coating options available						* Grayed-out sizes are not recommended with shown baseplate		

All plating and materials offered are RoHS and REACH Compliant

Availability

Many common sizes in stock. Call for availability.

A Rotaloc® Representative will be happy to discuss your specific application and product specifications.

Contact Rotaloc®

Contact Us:

Tel (303) 948-5434 or Toll Free (888) Rotaloc or (888)-768-2562
www.rotaloc.com | info@rotaloc.com

Address

Rotaloc International, LLC
 9903 Titan Court, Suite # 15, Littleton, CO 80125 - USA

Value - Quality - Service



M1-RB23#3 Metric Thread

Bonding Fasteners

Rotaloc International, LLC

Sample Image



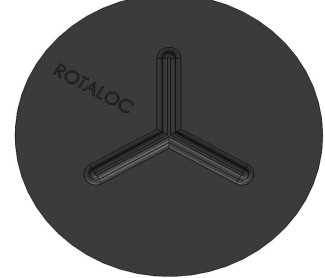
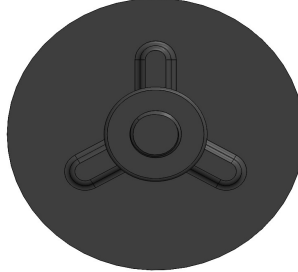
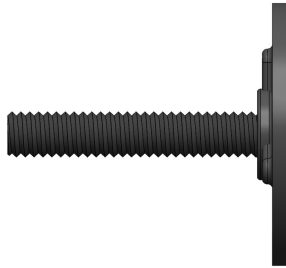
As Shown: M1-RB23#3-M6x25

M1 Male Threaded Bolt Stud

RB23#3 23 Millimeter Round Baseplate

Example - Part Number

M1-RB23#3-M6x25



Thread	Common Thread Lengths - Inch									
M4	12mm	15mm	16mm	20mm	25mm	35mm	40mm	50mm	60mm	75mm
M5	12mm	15mm	16mm	20mm	25mm	35mm	40mm	50mm	60mm	75mm
M6	12mm	15mm	16mm	20mm	25mm	35mm	40mm	50mm	60mm	75mm
M8	12mm	15mm	16mm	20mm	25mm	35mm	40mm	50mm	60mm	75mm
M10	12mm	15mm	16mm	20mm	25mm	35mm	40mm	50mm	60mm	75mm
M12	12mm	15mm	16mm	20mm	25mm	35mm	40mm	50mm	60mm	75mm

* Grayed-out sizes are not recommended with shown baseplate

Plating	TZP (Trivalent Zinc)	Zinc-Nickel	Nano	E-Coat	Grades	303	304	316
Other plating and coating options available						* Grayed-out sizes are not recommended with shown baseplate		

All plating and materials offered are RoHS and REACH Compliant

Availability

Many common sizes in stock. Call for availability.

A Rotaloc® Representative will be happy to discuss your specific application and product specifications.

Contact Rotaloc®

Contact Us:

Tel (303) 948-5434 or Toll Free (888) Rotaloc or (888)-768-2562
www.rotaloc.com | info@rotaloc.com

Address

Rotaloc International, LLC
 9903 Titan Court, Suite # 15, Littleton, CO 80125 - USA

Value - Quality - Service



M1-RB32 Metric Thread

Bonding Fasteners

Rotaloc International, LLC

Sample Image



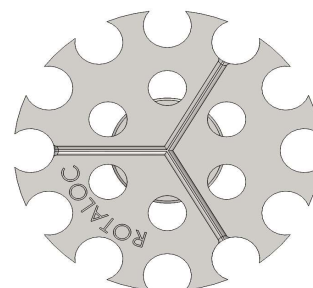
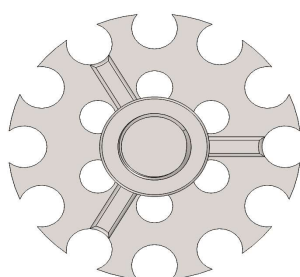
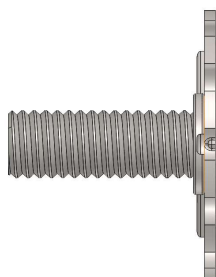
As Shown: M1-RB32-M8x20

M1 Male Threaded Bolt Stud

RB32 32 Millimeter Round Baseplate

Example - Part Number

M1-RB32-M8x20



Thread	Common Thread Lengths - Inch									
M4	12mm	15mm	16mm	20mm	25mm	35mm	40mm	50mm	60mm	75mm
M5	12mm	15mm	16mm	20mm	25mm	35mm	40mm	50mm	60mm	75mm
M6	12mm	15mm	16mm	20mm	25mm	35mm	40mm	50mm	60mm	75mm
M8	12mm	15mm	16mm	20mm	25mm	35mm	40mm	50mm	60mm	75mm
M10	12mm	15mm	16mm	20mm	25mm	35mm	40mm	50mm	60mm	75mm
M12	12mm	15mm	16mm	20mm	25mm	35mm	40mm	50mm	60mm	75mm

* Grayed-out sizes are not recommended with shown baseplate

Plating	TZP (Trivalent Zinc)	Zinc-Nickel	Nano	E-Coat	Grades	303	304	316

Other plating and coating options available

* Grayed-out sizes are not recommended with shown baseplate

All plating and materials offered are RoHS and REACH Compliant

Availability

Many common sizes in stock. Call for availability.

A Rotaloc® Representative will be happy to discuss your specific application and product specifications.

Contact Rotaloc®

Contact Us:

Tel (303) 948-5434 or Toll Free (888) Rotaloc or (888)-768-2562
www.rotaloc.com | info@rotaloc.com

Address

Rotaloc International, LLC
 9903 Titan Court, Suite # 15, Littleton, CO 80125 - USA

Value - Quality - Service



M1-RB32#4 Metric Thread

Bonding Fasteners

Rotaloc International, LLC

Sample Image



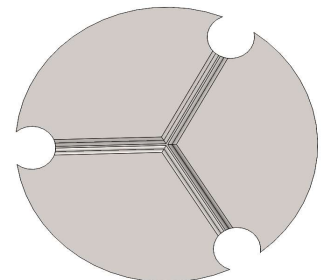
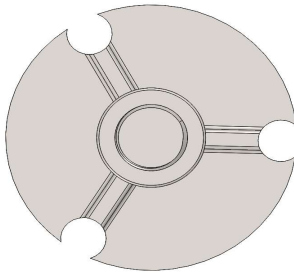
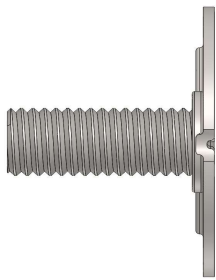
As Shown: M1-RB32#4-M8x20

M1 Male Threaded Bolt Stud

RB32#4 32 Millimeter Round Baseplate

Example - Part Number

M1-RB32#4-M8x20



Thread	Common Thread Lengths - Inch									
M4	12mm	15mm	16mm	20mm	25mm	35mm	40mm	50mm	60mm	75mm
M5	12mm	15mm	16mm	20mm	25mm	35mm	40mm	50mm	60mm	75mm
M6	12mm	15mm	16mm	20mm	25mm	35mm	40mm	50mm	60mm	75mm
M8	12mm	15mm	16mm	20mm	25mm	35mm	40mm	50mm	60mm	75mm
M10	12mm	15mm	16mm	20mm	25mm	35mm	40mm	50mm	60mm	75mm
M12	12mm	15mm	16mm	20mm	25mm	35mm	40mm	50mm	60mm	75mm

* Grayed-out sizes are not recommended with shown baseplate

Plating	TZP (Trivalent Zinc)	Zinc-Nickel	Nano	E-Coat	Grades	303	304	316

Other plating and coating options available

* Grayed-out sizes are not recommended with shown baseplate

All plating and materials offered are RoHS and REACH Compliant

Availability

Many common sizes in stock. Call for availability.

A Rotaloc® Representative will be happy to discuss your specific application and product specifications.

Contact Rotaloc®

Contact Us:

Tel (303) 948-5434 or Toll Free (888) Rotaloc or (888)-768-2562
www.rotaloc.com | info@rotaloc.com

Address

Rotaloc International, LLC
 9903 Titan Court, Suite # 15, Littleton, CO 80125 - USA

Value - Quality - Service



M1-RB38 Metric Thread

Bonding Fasteners

Rotaloc International, LLC

Sample Image



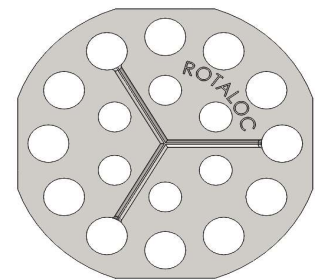
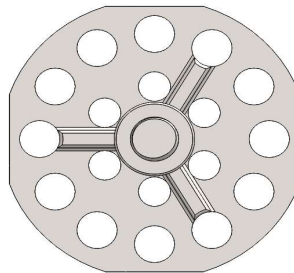
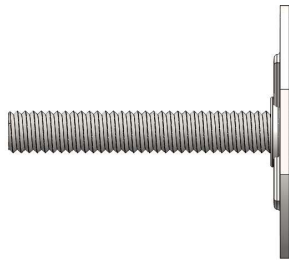
As Shown: M1-RB38-M6x35

M1 Male Threaded Bolt Stud

RB38 38 Millimeter Round Baseplate

Example - Part Number

M1-RB38-M6x35



Thread	Common Thread Lengths - Inch									
M4	12mm	15mm	16mm	20mm	25mm	35mm	40mm	50mm	60mm	75mm
M5	12mm	15mm	16mm	20mm	25mm	35mm	40mm	50mm	60mm	75mm
M6	12mm	15mm	16mm	20mm	25mm	35mm	40mm	50mm	60mm	75mm
M8	12mm	15mm	16mm	20mm	25mm	35mm	40mm	50mm	60mm	75mm
M10	12mm	15mm	16mm	20mm	25mm	35mm	40mm	50mm	60mm	75mm
M12	12mm	15mm	16mm	20mm	25mm	35mm	40mm	50mm	60mm	75mm

* Grayed-out sizes are not recommended with shown baseplate

Plating	TZP (Trivalent Zinc)	Zinc-Nickel	Nano	E-Coat	Grades	303	304	316

Other plating and coating options available

* Grayed-out sizes are not recommended with shown baseplate

All plating and materials offered are RoHS and REACH Compliant

Availability

Many common sizes in stock. Call for availability.

A Rotaloc® Representative will be happy to discuss your specific application and product specifications.

Contact Rotaloc®

Contact Us:

Tel (303) 948-5434 or Toll Free (888) Rotaloc or (888)-768-2562
www.rotaloc.com | info@rotaloc.com

Address

Rotaloc International, LLC
 9903 Titan Court, Suite # 15, Littleton, CO 80125 - USA

Value - Quality - Service



M1-RB38#3 Metric Thread

Bonding Fasteners

Rotaloc International, LLC

Sample Image



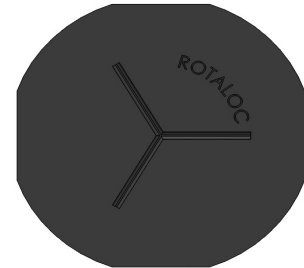
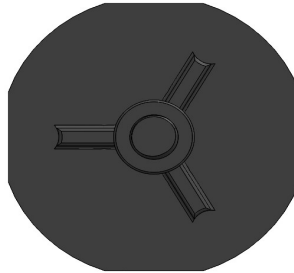
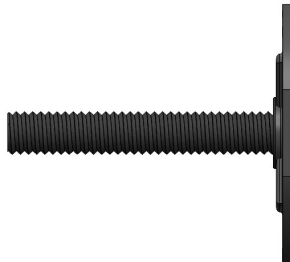
As Shown: M1-RB38#3-M6x20

M1 Male Threaded Bolt Stud

RB38#3 38 Millimeter Round Baseplate

Example - Part Number

M1-RB38#3-M6x20



Thread	Common Thread Lengths - Inch									
M4	12mm	15mm	16mm	20mm	25mm	35mm	40mm	50mm	60mm	75mm
M5	12mm	15mm	16mm	20mm	25mm	35mm	40mm	50mm	60mm	75mm
M6	12mm	15mm	16mm	20mm	25mm	35mm	40mm	50mm	60mm	75mm
M8	12mm	15mm	16mm	20mm	25mm	35mm	40mm	50mm	60mm	75mm
M10	12mm	15mm	16mm	20mm	25mm	35mm	40mm	50mm	60mm	75mm
M12	12mm	15mm	16mm	20mm	25mm	35mm	40mm	50mm	60mm	75mm

* Grayed-out sizes are not recommended with shown baseplate

Plating	TZP (Trivalent Zinc)	Zinc-Nickel	Nano	E-Coat	Grades	303	304	316

Other plating and coating options available

* Grayed-out sizes are not recommended with shown baseplate

All plating and materials offered are RoHS and REACH Compliant

Availability

Many common sizes in stock. Call for availability.

A Rotaloc® Representative will be happy to discuss your specific application and product specifications.

Contact Rotaloc®

Contact Us:

Tel (303) 948-5434 or Toll Free (888) Rotaloc or (888)-768-2562
www.rotaloc.com | info@rotaloc.com

Address

Rotaloc International, LLC
 9903 Titan Court, Suite # 15, Littleton, CO 80125 - USA

Value - Quality - Service



M1-RB38#4 Metric Thread

Bonding Fasteners

Rotaloc International, LLC

Sample Image



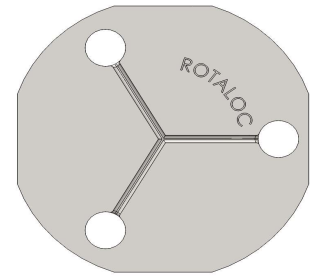
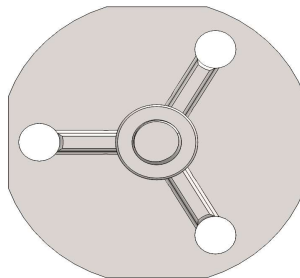
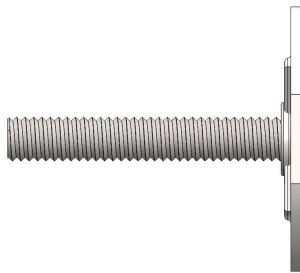
As Shown: M1-RB38#4-M5x25

M1 Male Threaded Bolt Stud

RB38#4 38 Millimeter Round Baseplate

Example - Part Number

M1-RB38#4-M5x25



Thread	Common Thread Lengths - Inch									
M4	12mm	15mm	16mm	20mm	25mm	35mm	40mm	50mm	60mm	75mm
M5	12mm	15mm	16mm	20mm	25mm	35mm	40mm	50mm	60mm	75mm
M6	12mm	15mm	16mm	20mm	25mm	35mm	40mm	50mm	60mm	75mm
M8	12mm	15mm	16mm	20mm	25mm	35mm	40mm	50mm	60mm	75mm
M10	12mm	15mm	16mm	20mm	25mm	35mm	40mm	50mm	60mm	75mm
M12	12mm	15mm	16mm	20mm	25mm	35mm	40mm	50mm	60mm	75mm

* Grayed-out sizes are not recommended with shown baseplate

Plating	TZP (Trivalent Zinc)	Zinc-Nickel	Nano	E-Coat	Grades	303	304	316

Other plating and coating options available

* Grayed-out sizes are not recommended with shown baseplate

All plating and materials offered are RoHS and REACH Compliant

Availability

Many common sizes in stock. Call for availability.

A Rotaloc® Representative will be happy to discuss your specific application and product specifications.

Contact Rotaloc®

Contact Us:

Tel (303) 948-5434 or Toll Free (888) Rotaloc or (888)-768-2562
www.rotaloc.com | info@rotaloc.com

Address

Rotaloc International, LLC
 9903 Titan Court, Suite # 15, Littleton, CO 80125 - USA

Value - Quality - Service



M1-RB38Barb Metric Thread

Bonding Fasteners

Rotaloc International, LLC

Sample Image



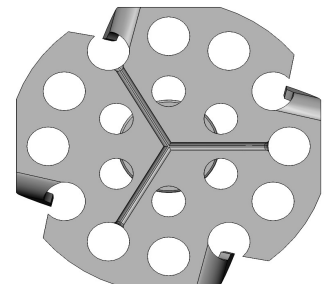
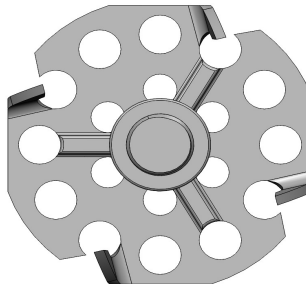
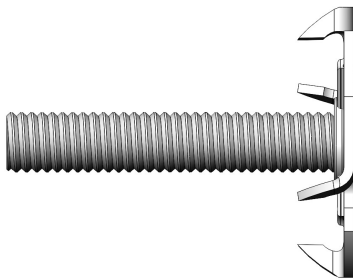
As Shown: M1-RB38Barb-M8x35

M1 Male Threaded Bolt Stud

RB38Barb 38 Millimeter Round Baseplate

Example - Part Number

M1-RB38Barb-M8x35



Thread	Common Thread Lengths - Inch									
M4	12mm	15mm	16mm	20mm	25mm	35mm	40mm	50mm	60mm	75mm
M5	12mm	15mm	16mm	20mm	25mm	35mm	40mm	50mm	60mm	75mm
M6	12mm	15mm	16mm	20mm	25mm	35mm	40mm	50mm	60mm	75mm
M8	12mm	15mm	16mm	20mm	25mm	35mm	40mm	50mm	60mm	75mm
M10	12mm	15mm	16mm	20mm	25mm	35mm	40mm	50mm	60mm	75mm
M12	12mm	15mm	16mm	20mm	25mm	35mm	40mm	50mm	60mm	75mm

* Grayed-out sizes are not recommended with shown baseplate

Plating	TZP (Trivalent Zinc)	Zinc-Nickel	Nano	E-Coat	Grades	303	304	316

Other plating and coating options available

* Grayed-out sizes are not recommended with shown baseplate

All plating and materials offered are RoHS and REACH Compliant

Availability

Many common sizes in stock. Call for availability.

A Rotaloc® Representative will be happy to discuss your specific application and product specifications.

Contact Rotaloc®

Contact Us:

Tel (303) 948-5434 or Toll Free (888) Rotaloc or (888)-768-2562
www.rotaloc.com | info@rotaloc.com

Address

Rotaloc International, LLC
 9903 Titan Court, Suite # 15, Littleton, CO 80125 - USA

Value - Quality - Service



M1-RB50 Metric Thread

Bonding Fasteners

Rotaloc International, LLC

Sample Image



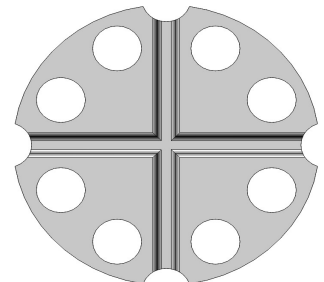
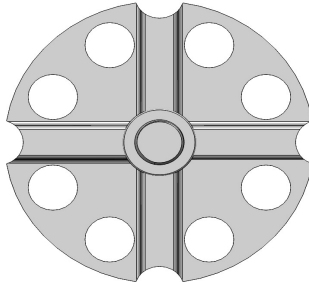
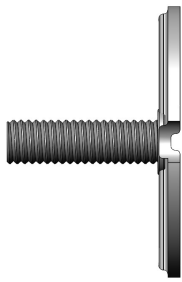
As Shown: M1-RB50-M8x25

M1 Male Threaded Bolt Stud

RB50 50 Millimeter Round Baseplate

Example - Part Number

M1-RB50-M8x25



Thread	Common Thread Lengths - Inch									
M4	12mm	15mm	16mm	20mm	25mm	35mm	40mm	50mm	60mm	75mm
M5	12mm	15mm	16mm	20mm	25mm	35mm	40mm	50mm	60mm	75mm
M6	12mm	15mm	16mm	20mm	25mm	35mm	40mm	50mm	60mm	75mm
M8	12mm	15mm	16mm	20mm	25mm	35mm	40mm	50mm	60mm	75mm
M10	12mm	15mm	16mm	20mm	25mm	35mm	40mm	50mm	60mm	75mm
M12	12mm	15mm	16mm	20mm	25mm	35mm	40mm	50mm	60mm	75mm

* Grayed-out sizes are not recommended with shown baseplate

Plating	TZP (Trivalent Zinc)	Zinc-Nickel	Nano	E-Coat	Grades	303	304	316

Other plating and coating options available

* Grayed-out sizes are not recommended with shown baseplate

All plating and materials offered are RoHS and REACH Compliant

Availability

Many common sizes in stock. Call for availability.

A Rotaloc® Representative will be happy to discuss your specific application and product specifications.

Contact Rotaloc®

Contact Us:

Tel (303) 948-5434 or Toll Free (888) Rotaloc or (888)-768-2562
www.rotaloc.com | info@rotaloc.com

Address

Rotaloc International, LLC
 9903 Titan Court, Suite # 15, Littleton, CO 80125 - USA

Value - Quality - Service



M1-RB76 Metric Thread

Bonding Fasteners

Rotaloc International, LLC

Sample Image



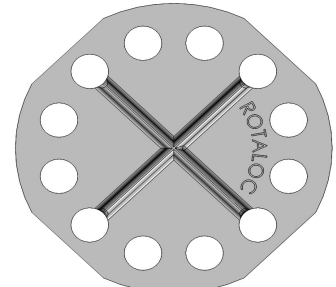
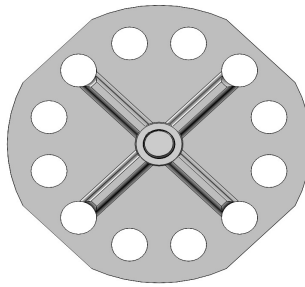
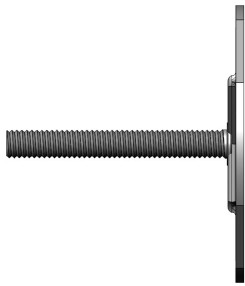
As Shown: M1-RB76-M6x50

M1 Male Threaded Bolt Stud

RB76 76 Millimeter Round Baseplate

Example - Part Number

M1-RB76-M6x50



Thread	Common Thread Lengths - Inch									
M4	12mm	15mm	16mm	20mm	25mm	35mm	40mm	50mm	60mm	75mm
M5	12mm	15mm	16mm	20mm	25mm	35mm	40mm	50mm	60mm	75mm
M6	12mm	15mm	16mm	20mm	25mm	35mm	40mm	50mm	60mm	75mm
M8	12mm	15mm	16mm	20mm	25mm	35mm	40mm	50mm	60mm	75mm
M10	12mm	15mm	16mm	20mm	25mm	35mm	40mm	50mm	60mm	75mm
M12	12mm	15mm	16mm	20mm	25mm	35mm	40mm	50mm	60mm	75mm

* Grayed-out sizes are not recommended with shown baseplate

Plating	TZP (Trivalent Zinc)	Zinc-Nickel	Nano	E-Coat	Grades	303	304	316

Other plating and coating options available

* Grayed-out sizes are not recommended with shown baseplate

All plating and materials offered are RoHS and REACH Compliant

Availability

Many common sizes in stock. Call for availability.

A Rotaloc® Representative will be happy to discuss your specific application and product specifications.

Contact Rotaloc®

Contact Us:

Tel (303) 948-5434 or Toll Free (888) Rotaloc or (888)-768-2562
www.rotaloc.com | info@rotaloc.com

Address

Rotaloc International, LLC
 9903 Titan Court, Suite # 15, Littleton, CO 80125 - USA

Value - Quality - Service



M1-SB15 Metric Thread

Bonding Fasteners

Rotaloc International, LLC

Sample Image



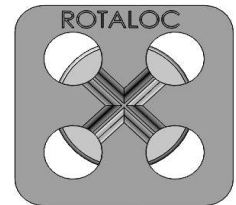
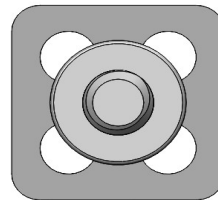
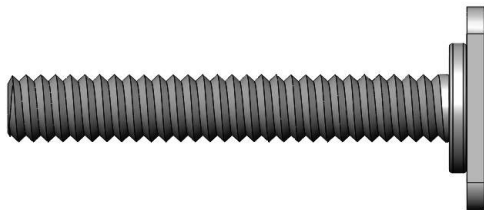
As Shown: M1-SB15-M5x35

M1 Male Threaded Bolt Stud

SB15 15 Millimeter Square Baseplate

Example - Part Number

M1-SB15-M5x35



Thread	Common Thread Lengths - Inch									
M4	12mm	15mm	16mm	20mm	25mm	35mm	40mm	50mm	60mm	75mm
M5	12mm	15mm	16mm	20mm	25mm	35mm	40mm	50mm	60mm	75mm
M6	12mm	15mm	16mm	20mm	25mm	35mm	40mm	50mm	60mm	75mm
M8	12mm	15mm	16mm	20mm	25mm	35mm	40mm	50mm	60mm	75mm
M10	12mm	15mm	16mm	20mm	25mm	35mm	40mm	50mm	60mm	75mm
M12	12mm	15mm	16mm	20mm	25mm	35mm	40mm	50mm	60mm	75mm

* Grayed-out sizes are not recommended with shown baseplate

Plating	TZP (Trivalent Zinc)	Zinc-Nickel	Nano	E-Coat	Grades	303	304	316
Other plating and coating options available						* Grayed-out sizes are not recommended with shown baseplate		

All plating and materials offered are RoHS and REACH Compliant

Availability

Many common sizes in stock. Call for availability.

A Rotaloc® Representative will be happy to discuss your specific application and product specifications.

Contact Rotaloc®

Contact Us:

Tel (303) 948-5434 or Toll Free (888) Rotaloc or (888)-768-2562
www.rotaloc.com | info@rotaloc.com

Address

Rotaloc International, LLC
 9903 Titan Court, Suite # 15, Littleton, CO 80125 - USA

Value - Quality - Service



M1-SB30 Metric Thread

Bonding Fasteners

Rotaloc International, LLC

Sample Image



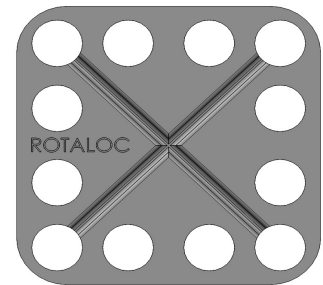
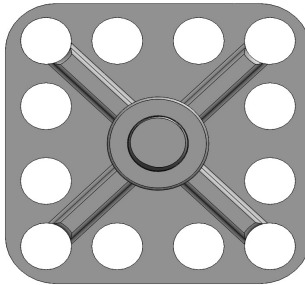
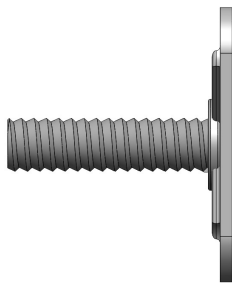
As Shown: M1-SB30-M6x20

M1 Male Threaded Bolt Stud

SB30 30 Millimeter Square Baseplate

Example - Part Number

M1-SB30-M6x20



Thread	Common Thread Lengths - Inch									
M4	12mm	15mm	16mm	20mm	25mm	35mm	40mm	50mm	60mm	75mm
M5	12mm	15mm	16mm	20mm	25mm	35mm	40mm	50mm	60mm	75mm
M6	12mm	15mm	16mm	20mm	25mm	35mm	40mm	50mm	60mm	75mm
M8	12mm	15mm	16mm	20mm	25mm	35mm	40mm	50mm	60mm	75mm
M10	12mm	15mm	16mm	20mm	25mm	35mm	40mm	50mm	60mm	75mm
M12	12mm	15mm	16mm	20mm	25mm	35mm	40mm	50mm	60mm	75mm

* Grayed-out sizes are not recommended with shown baseplate

Plating	TZP (Trivalent Zinc)	Zinc-Nickel	Nano	E-Coat	Grades	303	304	316

Other plating and coating options available

* Grayed-out sizes are not recommended with shown baseplate

All plating and materials offered are RoHS and REACH Compliant

Availability

Many common sizes in stock. Call for availability.

A Rotaloc® Representative will be happy to discuss your specific application and product specifications.

Contact Rotaloc®

Contact Us:

Tel (303) 948-5434 or Toll Free (888) Rotaloc or (888)-768-2562
www.rotaloc.com | info@rotaloc.com

Address

Rotaloc International, LLC
 9903 Titan Court, Suite # 15, Littleton, CO 80125 - USA

Value - Quality - Service



M1-SB32 Metric Thread

Bonding Fasteners

Rotaloc International, LLC

Sample Image



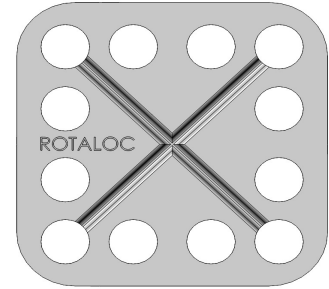
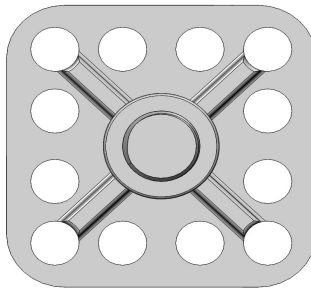
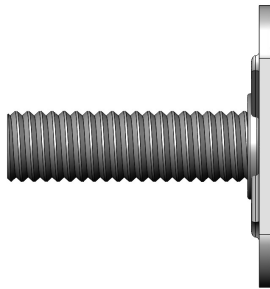
As Shown: M1-SB32-M8x25

M1 Male Threaded Bolt Stud

SB32 32 Millimeter Square Baseplate

Example - Part Number

M1-SB32-M8x25



Thread	Common Thread Lengths - Inch									
M4	12mm	15mm	16mm	20mm	25mm	35mm	40mm	50mm	60mm	75mm
M5	12mm	15mm	16mm	20mm	25mm	35mm	40mm	50mm	60mm	75mm
M6	12mm	15mm	16mm	20mm	25mm	35mm	40mm	50mm	60mm	75mm
M8	12mm	15mm	16mm	20mm	25mm	35mm	40mm	50mm	60mm	75mm
M10	12mm	15mm	16mm	20mm	25mm	35mm	40mm	50mm	60mm	75mm
M12	12mm	15mm	16mm	20mm	25mm	35mm	40mm	50mm	60mm	75mm

* Grayed-out sizes are not recommended with shown baseplate

Plating	TZP (Trivalent Zinc)	Zinc-Nickel	Nano	E-Coat	Grades	303	304	316
Other plating and coating options available						* Grayed-out sizes are not recommended with shown baseplate		

All plating and materials offered are RoHS and REACH Compliant

Availability

Many common sizes in stock. Call for availability.

A Rotaloc® Representative will be happy to discuss your specific application and product specifications.

Contact Rotaloc®

Contact Us:

Tel (303) 948-5434 or Toll Free (888) Rotaloc or (888)-768-2562
www.rotaloc.com | info@rotaloc.com

Address

Rotaloc International, LLC
 9903 Titan Court, Suite # 15, Littleton, CO 80125 - USA

Value - Quality - Service



M1-SB50 Metric Thread

Bonding Fasteners

Rotaloc International, LLC

Sample Image



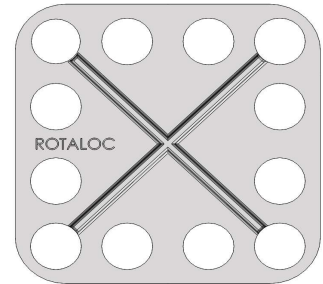
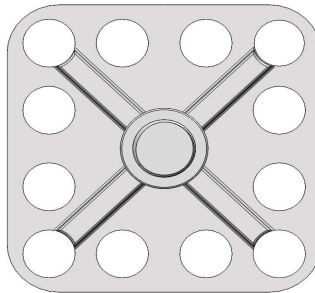
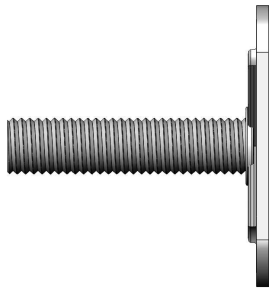
As Shown: M1-SB50-M10x40

M1 Male Threaded Bolt Stud

SB50 50 Millimeter Square Baseplate

Example - Part Number

M1-SB50-M10x40



Thread	Common Thread Lengths - Inch									
M4	12mm	15mm	16mm	20mm	25mm	35mm	40mm	50mm	60mm	75mm
M5	12mm	15mm	16mm	20mm	25mm	35mm	40mm	50mm	60mm	75mm
M6	12mm	15mm	16mm	20mm	25mm	35mm	40mm	50mm	60mm	75mm
M8	12mm	15mm	16mm	20mm	25mm	35mm	40mm	50mm	60mm	75mm
M10	12mm	15mm	16mm	20mm	25mm	35mm	40mm	50mm	60mm	75mm
M12	12mm	15mm	16mm	20mm	25mm	35mm	40mm	50mm	60mm	75mm

* Grayed-out sizes are not recommended with shown baseplate

Plating	TZP (Trivalent Zinc)	Zinc-Nickel	Nano	E-Coat	Grades	303	304	316

Other plating and coating options available

* Grayed-out sizes are not recommended with shown baseplate

All plating and materials offered are RoHS and REACH Compliant

Availability

Many common sizes in stock. Call for availability.

A Rotaloc® Representative will be happy to discuss your specific application and product specifications.

Contact Rotaloc®

Contact Us:

Tel (303) 948-5434 or Toll Free (888) Rotaloc or (888)-768-2562
www.rotaloc.com | info@rotaloc.com

Address

Rotaloc International, LLC
 9903 Titan Court, Suite # 15, Littleton, CO 80125 - USA

Value - Quality - Service



M1-SB50rw Metric Thread

Bonding Fasteners

Rotaloc International, LLC

Sample Image



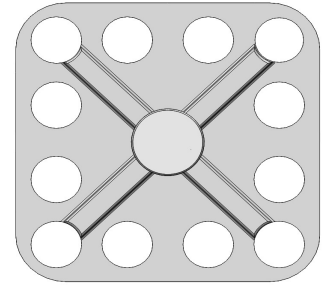
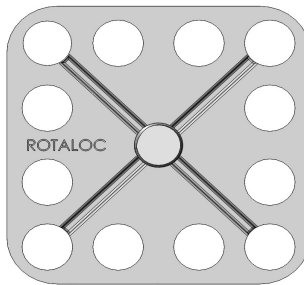
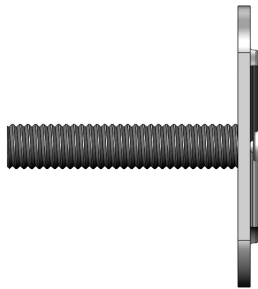
As Shown: M1-SB50rw-M8x35

M1 Male Threaded Bolt Stud

SB50rw 50 Millimeter Square Baseplate

Example - Part Number

M1-SB50rw-M8x35



Thread	Common Thread Lengths - Inch									
M4	12mm	15mm	16mm	20mm	25mm	35mm	40mm	50mm	60mm	75mm
M5	12mm	15mm	16mm	20mm	25mm	35mm	40mm	50mm	60mm	75mm
M6	12mm	15mm	16mm	20mm	25mm	35mm	40mm	50mm	60mm	75mm
M8	12mm	15mm	16mm	20mm	25mm	35mm	40mm	50mm	60mm	75mm
M10	12mm	15mm	16mm	20mm	25mm	35mm	40mm	50mm	60mm	75mm
M12	12mm	15mm	16mm	20mm	25mm	35mm	40mm	50mm	60mm	75mm

* Grayed-out sizes are not recommended with shown baseplate

Plating	TZP (Trivalent Zinc)	Zinc-Nickel	Nano	E-Coat	Grades	303	304	316

Other plating and coating options available

* Grayed-out sizes are not recommended with shown baseplate

All plating and materials offered are RoHS and REACH Compliant

Availability

Many common sizes in stock. Call for availability.

A Rotaloc® Representative will be happy to discuss your specific application and product specifications.

Contact Rotaloc®

Contact Us:

Tel (303) 948-5434 or Toll Free (888) Rotaloc or (888)-768-2562
www.rotaloc.com | info@rotaloc.com

Address

Rotaloc International, LLC
 9903 Titan Court, Suite # 15, Littleton, CO 80125 - USA

Value - Quality - Service

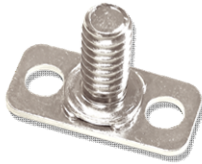


M1-T24x11.5 Metric Thread

Bonding Fasteners

Rotaloc International, LLC

Sample Image



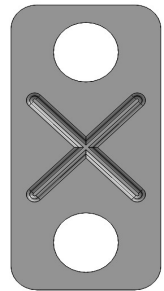
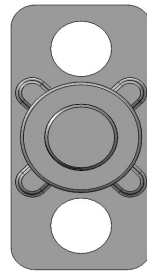
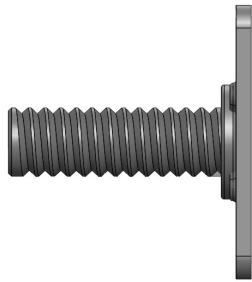
As Shown: M1-T24x11.5-M6x16

M1 Male Threaded Bolt Stud

T24x11.5 24x11.5 Millimeter Rectangular Baseplate

Example - Part Number

M1-T24x11.5-M6x16



Thread	Common Thread Lengths - Inch									
M4	12mm	15mm	16mm	20mm	25mm	35mm	40mm	50mm	60mm	75mm
M5	12mm	15mm	16mm	20mm	25mm	35mm	40mm	50mm	60mm	75mm
M6	12mm	15mm	16mm	20mm	25mm	35mm	40mm	50mm	60mm	75mm
M8	12mm	15mm	16mm	20mm	25mm	35mm	40mm	50mm	60mm	75mm
M10	12mm	15mm	16mm	20mm	25mm	35mm	40mm	50mm	60mm	75mm
M12	12mm	15mm	16mm	20mm	25mm	35mm	40mm	50mm	60mm	75mm

* Grayed-out sizes are not recommended with shown baseplate

Plating	TZP (Trivalent Zinc)	Zinc-Nickel	Nano	E-Coat	Grades	303	304	316
Other plating and coating options available						* Grayed-out sizes are not recommended with shown baseplate		

All plating and materials offered are RoHS and REACH Compliant

Availability

Many common sizes in stock. Call for availability.

A Rotaloc® Representative will be happy to discuss your specific application and product specifications.

Contact Rotaloc®

Contact Us:

Tel (303) 948-5434 or Toll Free (888) Rotaloc or (888)-768-2562
www.rotaloc.com | info@rotaloc.com

Address

Rotaloc International, LLC
 9903 Titan Court, Suite # 15, Littleton, CO 80125 - USA

Value - Quality - Service

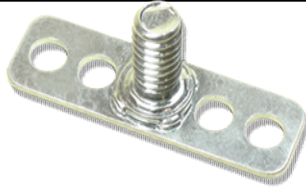


M1-T38x11.5 Metric Thread

Bonding Fasteners

Rotaloc International, LLC

Sample Image



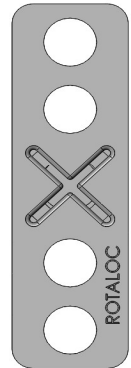
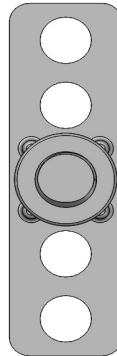
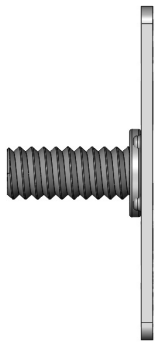
As Shown: M1-T38x11.5-M6x15

M1 Male Threaded Bolt Stud

T38x11.5 38x11.5 Millimeter Rectangular Baseplate

Example - Part Number

M1-T38x11.5-M6x15



Thread	Common Thread Lengths - Inch									
M4	12mm	15mm	16mm	20mm	25mm	35mm	40mm	50mm	60mm	75mm
M5	12mm	15mm	16mm	20mm	25mm	35mm	40mm	50mm	60mm	75mm
M6	12mm	15mm	16mm	20mm	25mm	35mm	40mm	50mm	60mm	75mm
M8	12mm	15mm	16mm	20mm	25mm	35mm	40mm	50mm	60mm	75mm
M10	12mm	15mm	16mm	20mm	25mm	35mm	40mm	50mm	60mm	75mm
M12	12mm	15mm	16mm	20mm	25mm	35mm	40mm	50mm	60mm	75mm

* Grayed-out sizes are not recommended with shown baseplate

Plating	TZP (Trivalent Zinc)	Zinc-Nickel	Nano	E-Coat	Grades	303	304	316
Other plating and coating options available						* Grayed-out sizes are not recommended with shown baseplate		

All plating and materials offered are RoHS and REACH Compliant

Availability

Many common sizes in stock. Call for availability.

A Rotaloc® Representative will be happy to discuss your specific application and product specifications.

Contact Rotaloc®

Contact Us:

Tel (303) 948-5434 or Toll Free (888) Rotaloc or (888)-768-2562
www.rotaloc.com | info@rotaloc.com

Address

Rotaloc International, LLC
 9903 Titan Court, Suite # 15, Littleton, CO 80125 - USA

Value - Quality - Service



M1-T38x15 Metric Thread

Bonding Fasteners

Rotaloc International, LLC

Sample Image



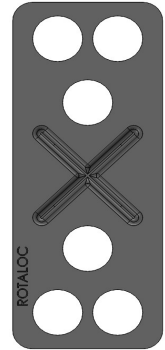
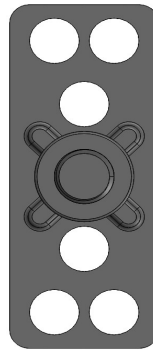
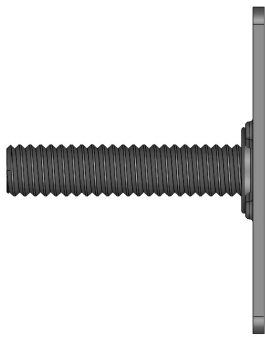
As Shown: M1-T38x15-M6x25

M1 Male Threaded Bolt Stud

T38x15 38x15 Millimeter Rectangular Baseplate

Example - Part Number

M1-T38x15-M6x25



Thread	Common Thread Lengths - Inch									
M4	12mm	15mm	16mm	20mm	25mm	35mm	40mm	50mm	60mm	75mm
M5	12mm	15mm	16mm	20mm	25mm	35mm	40mm	50mm	60mm	75mm
M6	12mm	15mm	16mm	20mm	25mm	35mm	40mm	50mm	60mm	75mm
M8	12mm	15mm	16mm	20mm	25mm	35mm	40mm	50mm	60mm	75mm
M10	12mm	15mm	16mm	20mm	25mm	35mm	40mm	50mm	60mm	75mm
M12	12mm	15mm	16mm	20mm	25mm	35mm	40mm	50mm	60mm	75mm

* Grayed-out sizes are not recommended with shown baseplate

Plating	TZP (Trivalent Zinc)	Zinc-Nickel	Nano	E-Coat	Grades	303	304	316
Other plating and coating options available						* Grayed-out sizes are not recommended with shown baseplate		

All plating and materials offered are RoHS and REACH Compliant

Availability

Many common sizes in stock. Call for availability.

A Rotaloc® Representative will be happy to discuss your specific application and product specifications.

Contact Rotaloc®

Contact Us:

Tel (303) 948-5434 or Toll Free (888) Rotaloc or (888)-768-2562
www.rotaloc.com | info@rotaloc.com

Address

Rotaloc International, LLC
 9903 Titan Court, Suite # 15, Littleton, CO 80125 - USA

Value - Quality - Service



M1-T38x15f Metric Thread

Bonding Fasteners

Rotaloc International, LLC

Sample Image



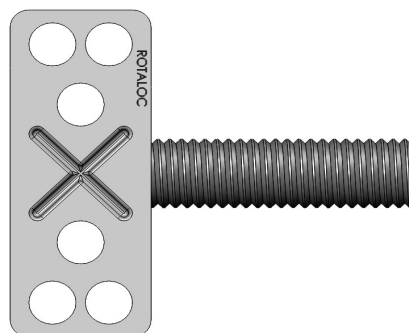
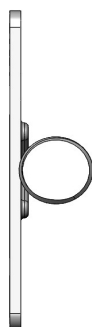
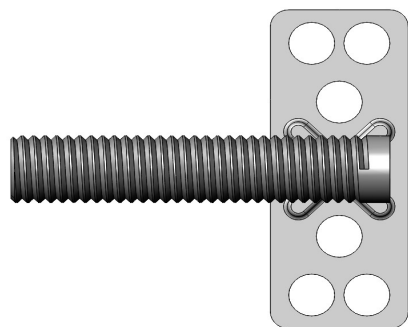
As Shown: M1-T38x15f-M8x40

M1 Male Threaded Bolt Stud

T38x15f 38x15 Millimeter Rectangular Baseplate

Example - Part Number

M1-T38x15f-M8x40



Thread	Common Thread Lengths - Inch									
M4	12mm	15mm	16mm	20mm	25mm	35mm	40mm	50mm	60mm	75mm
M5	12mm	15mm	16mm	20mm	25mm	35mm	40mm	50mm	60mm	75mm
M6	12mm	15mm	16mm	20mm	25mm	35mm	40mm	50mm	60mm	75mm
M8	12mm	15mm	16mm	20mm	25mm	35mm	40mm	50mm	60mm	75mm
M10	12mm	15mm	16mm	20mm	25mm	35mm	40mm	50mm	60mm	75mm
M12	12mm	15mm	16mm	20mm	25mm	35mm	40mm	50mm	60mm	75mm

* Grayed-out sizes are not recommended with shown baseplate

Plating	TZP (Trivalent Zinc)	Zinc-Nickel	Nano	E-Coat	Grades	303	304	316

Other plating and coating options available

* Grayed-out sizes are not recommended with shown baseplate

All plating and materials offered are RoHS and REACH Compliant

Availability

Many common sizes in stock. Call for availability.

A Rotaloc® Representative will be happy to discuss your specific application and product specifications.

Contact Rotaloc®

Contact Us:

Tel (303) 948-5434 or Toll Free (888) Rotaloc or (888)-768-2562
www.rotaloc.com | info@rotaloc.com

Address

Rotaloc International, LLC
 9903 Titan Court, Suite # 15, Littleton, CO 80125 - USA

Value - Quality - Service

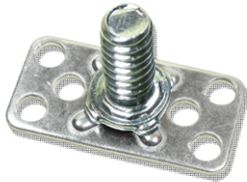


M1-T38x19 Metric Thread

Bonding Fasteners

Rotaloc International, LLC

Sample Image



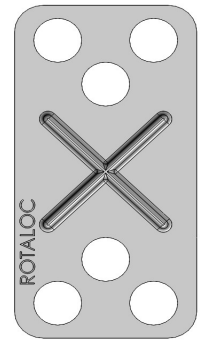
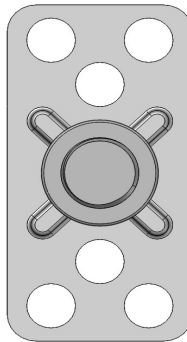
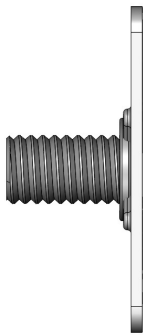
As Shown: M1-T38x19-M8x12

M1 Male Threaded Bolt Stud

T38x19 38x19 Millimeter Rectangular Baseplate





Example - Part Number

M1-T38x19-M8x12



Thread	Common Thread Lengths - Inch									
M4	12mm	15mm	16mm	20mm	25mm	35mm	40mm	50mm	60mm	75mm
M5	12mm	15mm	16mm	20mm	25mm	35mm	40mm	50mm	60mm	75mm
M6	12mm	15mm	16mm	20mm	25mm	35mm	40mm	50mm	60mm	75mm
M8	12mm	15mm	16mm	20mm	25mm	35mm	40mm	50mm	60mm	75mm
M10	12mm	15mm	16mm	20mm	25mm	35mm	40mm	50mm	60mm	75mm
M12	12mm	15mm	16mm	20mm	25mm	35mm	40mm	50mm	60mm	75mm

* Grayed-out sizes are not recommended with shown baseplate

Plating	TZP (Trivalent Zinc)	Zinc-Nickel	Nano	E-Coat	Grades	303	304	316
								
Other plating and coating options available						* Grayed-out sizes are not recommended with shown baseplate		

All plating and materials offered are RoHS and REACH Compliant

Availability

Many common sizes in stock. Call for availability.

A Rotaloc® Representative will be happy to discuss your specific application and product specifications.

Contact Rotaloc®

Contact Us:

Tel (303) 948-5434 or Toll Free (888) Rotaloc or (888)-768-2562
www.rotaloc.com | info@rotaloc.com

Address

Rotaloc International, LLC
 9903 Titan Court, Suite # 15, Littleton, CO 80125 - USA

Value - Quality - Service

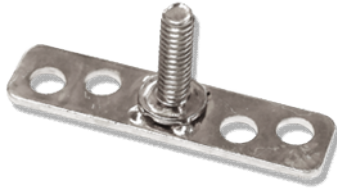


M1-T40x10 Metric Thread

Bonding Fasteners

Rotaloc International, LLC

Sample Image



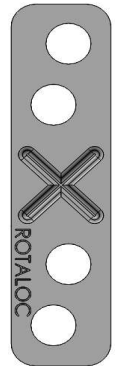
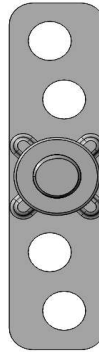
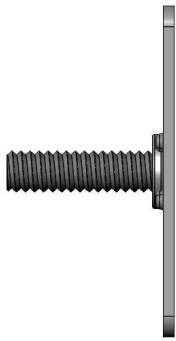
As Shown: M1-T40x10-M5x16

M1 Male Threaded Bolt Stud

T40x10 40x10 Millimeter Rectangular Baseplate

Example - Part Number

M1-T40x10-M5x16



Thread	Common Thread Lengths - Inch									
M4	12mm	15mm	16mm	20mm	25mm	35mm	40mm	50mm	60mm	75mm
M5	12mm	15mm	16mm	20mm	25mm	35mm	40mm	50mm	60mm	75mm
M6	12mm	15mm	16mm	20mm	25mm	35mm	40mm	50mm	60mm	75mm
M8	12mm	15mm	16mm	20mm	25mm	35mm	40mm	50mm	60mm	75mm
M10	12mm	15mm	16mm	20mm	25mm	35mm	40mm	50mm	60mm	75mm
M12	12mm	15mm	16mm	20mm	25mm	35mm	40mm	50mm	60mm	75mm

* Grayed-out sizes are not recommended with shown baseplate

Plating	TZP (Trivalent Zinc)	Zinc-Nickel	Nano	E-Coat	Grades	303	304	316
Other plating and coating options available						* Grayed-out sizes are not recommended with shown baseplate		

All plating and materials offered are RoHS and REACH Compliant

Availability

Many common sizes in stock. Call for availability.

A Rotaloc® Representative will be happy to discuss your specific application and product specifications.

Contact Rotaloc®

Contact Us:

Tel (303) 948-5434 or Toll Free (888) Rotaloc or (888)-768-2562
www.rotaloc.com | info@rotaloc.com

Address

Rotaloc International, LLC
 9903 Titan Court, Suite # 15, Littleton, CO 80125 - USA

Value - Quality - Service



M1-T41x19 Metric Thread

Bonding Fasteners

Rotaloc International, LLC

Sample Image



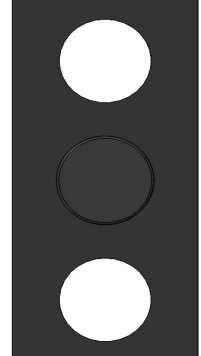
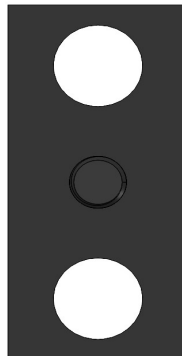
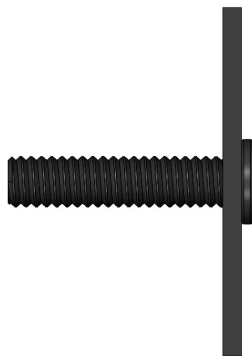
As Shown: M1-T41x19-M6x25

M1 Male Threaded Bolt Stud

T41x19 41x19 Millimeter Rectangular Baseplate

Example - Part Number

M1-T41x19-M6x25



Thread	Common Thread Lengths - Inch									
M4	12mm	15mm	16mm	20mm	25mm	35mm	40mm	50mm	60mm	75mm
M5	12mm	15mm	16mm	20mm	25mm	35mm	40mm	50mm	60mm	75mm
M6	12mm	15mm	16mm	20mm	25mm	35mm	40mm	50mm	60mm	75mm
M8	12mm	15mm	16mm	20mm	25mm	35mm	40mm	50mm	60mm	75mm
M10	12mm	15mm	16mm	20mm	25mm	35mm	40mm	50mm	60mm	75mm
M12	12mm	15mm	16mm	20mm	25mm	35mm	40mm	50mm	60mm	75mm

* Grayed-out sizes are not recommended with shown baseplate

Plating	TZP (Trivalent Zinc)	Zinc-Nickel	Nano	E-Coat	Grades	303	304	316

Other plating and coating options available

* Grayed-out sizes are not recommended with shown baseplate

All plating and materials offered are RoHS and REACH Compliant

Availability

Many common sizes in stock. Call for availability.

A Rotaloc® Representative will be happy to discuss your specific application and product specifications.

Contact Rotaloc®

Contact Us:

Tel (303) 948-5434 or Toll Free (888) Rotaloc or (888)-768-2562
www.rotaloc.com | info@rotaloc.com

Address

Rotaloc International, LLC
 9903 Titan Court, Suite # 15, Littleton, CO 80125 - USA

Value - Quality - Service

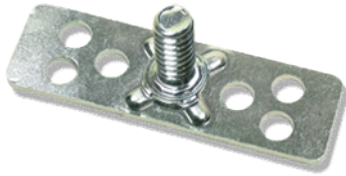


M1-T50x15 Metric Thread

Bonding Fasteners

Rotaloc International, LLC

Sample Image



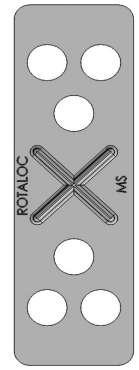
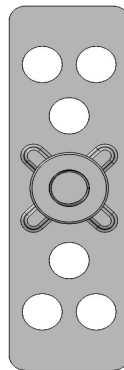
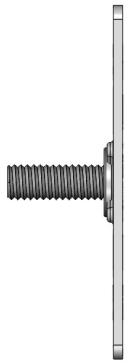
As Shown: M1-T50x15-M5x12

M1 Male Threaded Bolt Stud

T50x15 50x15 Millimeter Rectangular Baseplate

Example - Part Number

M1-T50x15-M5x12



Thread	Common Thread Lengths - Inch									
M4	12mm	15mm	16mm	20mm	25mm	35mm	40mm	50mm	60mm	75mm
M5	12mm	15mm	16mm	20mm	25mm	35mm	40mm	50mm	60mm	75mm
M6	12mm	15mm	16mm	20mm	25mm	35mm	40mm	50mm	60mm	75mm
M8	12mm	15mm	16mm	20mm	25mm	35mm	40mm	50mm	60mm	75mm
M10	12mm	15mm	16mm	20mm	25mm	35mm	40mm	50mm	60mm	75mm
M12	12mm	15mm	16mm	20mm	25mm	35mm	40mm	50mm	60mm	75mm

* Grayed-out sizes are not recommended with shown baseplate

Plating	TZP (Trivalent Zinc)	Zinc-Nickel	Nano	E-Coat	Grades	303	304	316
Other plating and coating options available						* Grayed-out sizes are not recommended with shown baseplate		

All plating and materials offered are RoHS and REACH Compliant

Availability

Many common sizes in stock. Call for availability.

A Rotaloc® Representative will be happy to discuss your specific application and product specifications.

Contact Rotaloc®

Contact Us:

Tel (303) 948-5434 or Toll Free (888) Rotaloc or (888)-768-2562
www.rotaloc.com | info@rotaloc.com

Address

Rotaloc International, LLC
 9903 Titan Court, Suite # 15, Littleton, CO 80125 - USA

Value - Quality - Service



M1-T76x38 Metric Thread

Bonding Fasteners

Rotaloc International, LLC

Sample Image



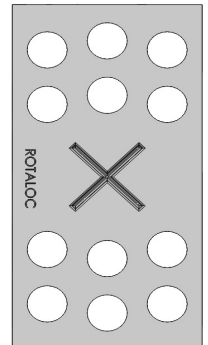
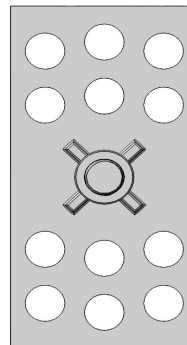
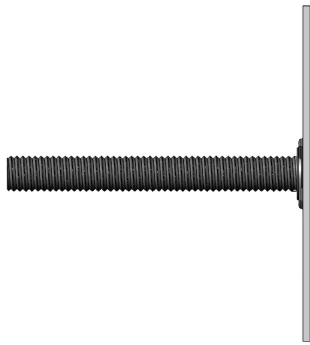
As Shown: M1-T76x38-M8x75

M1 Male Threaded Bolt Stud

T76x38 76x38 Millimeter Rectangular Baseplate

Example - Part Number

M1-T76x38-M8x75



Thread	Common Thread Lengths - Inch									
M4	12mm	15mm	16mm	20mm	25mm	35mm	40mm	50mm	60mm	75mm
M5	12mm	15mm	16mm	20mm	25mm	35mm	40mm	50mm	60mm	75mm
M6	12mm	15mm	16mm	20mm	25mm	35mm	40mm	50mm	60mm	75mm
M8	12mm	15mm	16mm	20mm	25mm	35mm	40mm	50mm	60mm	75mm
M10	12mm	15mm	16mm	20mm	25mm	35mm	40mm	50mm	60mm	75mm
M12	12mm	15mm	16mm	20mm	25mm	35mm	40mm	50mm	60mm	75mm

* Grayed-out sizes are not recommended with shown baseplate

Plating	TZP (Trivalent Zinc)	Zinc-Nickel	Nano	E-Coat	Grades	303	304	316

Other plating and coating options available

* Grayed-out sizes are not recommended with shown baseplate

All plating and materials offered are RoHS and REACH Compliant

Availability

Many common sizes in stock. Call for availability.

A Rotaloc® Representative will be happy to discuss your specific application and product specifications.

Contact Rotaloc®

Contact Us:

Tel (303) 948-5434 or Toll Free (888) Rotaloc or (888)-768-2562
www.rotaloc.com | info@rotaloc.com

Address

Rotaloc International, LLC
 9903 Titan Court, Suite # 15, Littleton, CO 80125 - USA

Value - Quality - Service

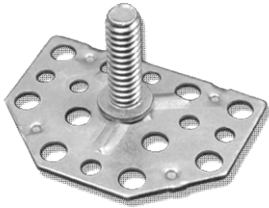


M1-HP44 Metric Thread

Bonding Fasteners

Rotaloc International, LLC

Sample Image



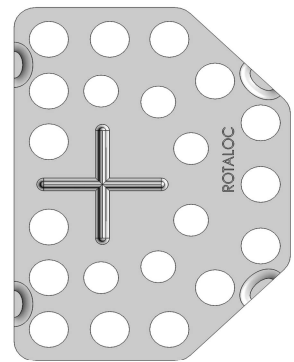
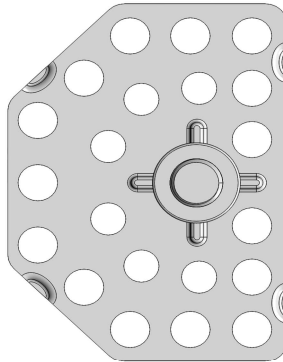
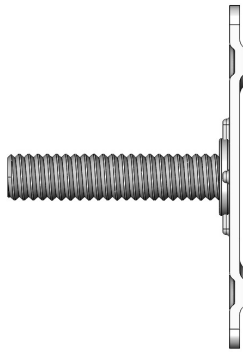
As Shown: M1-HP44-M6x25

M1 Male Threaded Bolt Stud

HP44 44 Millimeter Homeplate Like Baseplate

Example - Part Number

M1-HP44-M6x25



Thread	Common Thread Lengths - Inch									
M4	12mm	15mm	16mm	20mm	25mm	35mm	40mm	50mm	60mm	75mm
M5	12mm	15mm	16mm	20mm	25mm	35mm	40mm	50mm	60mm	75mm
M6	12mm	15mm	16mm	20mm	25mm	35mm	40mm	50mm	60mm	75mm
M8	12mm	15mm	16mm	20mm	25mm	35mm	40mm	50mm	60mm	75mm
M10	12mm	15mm	16mm	20mm	25mm	35mm	40mm	50mm	60mm	75mm
M12	12mm	15mm	16mm	20mm	25mm	35mm	40mm	50mm	60mm	75mm

* Grayed-out sizes are not recommended with shown baseplate

Plating	TZP (Trivalent Zinc)	Zinc-Nickel	Nano	E-Coat	Grades	303	304	316

Other plating and coating options available

* Grayed-out sizes are not recommended with shown baseplate

All plating and materials offered are RoHS and REACH Compliant

Availability

Many common sizes in stock. Call for availability.

A Rotaloc® Representative will be happy to discuss your specific application and product specifications.

Contact Rotaloc®

Contact Us:

Tel (303) 948-5434 or Toll Free (888) Rotaloc or (888)-768-2562
www.rotaloc.com | info@rotaloc.com

Address

Rotaloc International, LLC
 9903 Titan Court, Suite # 15, Littleton, CO 80125 - USA

Value - Quality - Service