



F2-RB19 Metric Thread

Bonding Fasteners

Rotaloc International, LLC

Sample Image



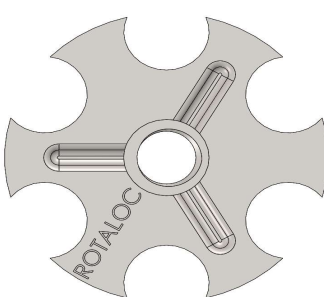
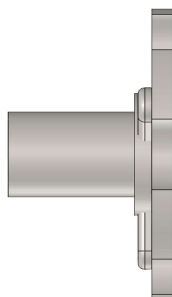
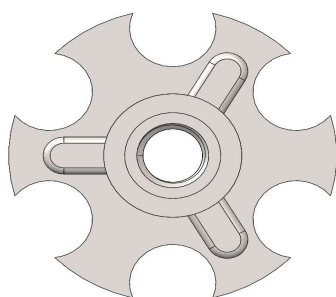
As Shown: F2-RB19-M5x10

F2 Female Threaded Collar

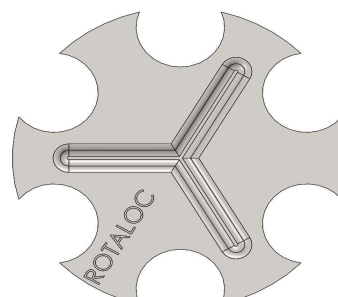
RB19 19 Millimeter Round Baseplate

Example - Part Number

F2-RB19-M5x10



Open (Thru)



Closed (Blind)

Thread	Common Thread Lengths - Inch							
M4	12mm	15mm	16mm	20mm	25mm	35mm	40mm	50mm
M5	12mm	15mm	16mm	20mm	25mm	35mm	40mm	50mm
M6	12mm	15mm	16mm	20mm	25mm	35mm	40mm	50mm
M8	12mm	15mm	16mm	20mm	25mm	35mm	40mm	50mm
M10	12mm	15mm	16mm	20mm	25mm	35mm	40mm	50mm
M12	12mm	15mm	16mm	20mm	25mm	35mm	40mm	50mm

* Grayed-out sizes are not recommended with shown baseplate

Plating	TZP (Trivalent Zinc)	Zinc-Nickel	Nano	E-Coat	Grades	303	304	316
Other plating and coating options					* Grayed-out sizes are not recommended with shown baseplate			

All plating and materials offered are RoHS and REACH Compliant

Availability

Many common sizes in stock. Call for availability.

A Rotaloc® Representative will be happy to discuss your specific application and product specifications.

Contact Rotaloc®

Contact Us:

Tel (303) 948-5434 or Toll Free (888) Rotaloc or (888)-768-2562
www.rotaloc.com | info@rotaloc.com

Address

Rotaloc International, LLC
 9903 Titan Court, Suite #15, Littleton, CO 80125 - USA

Value - Quality - Service



F2-RB23 Metric Thread Bonding Fasteners

Rotaloc International, LLC

Sample Image



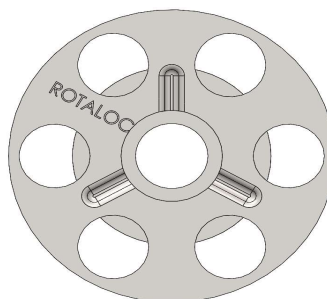
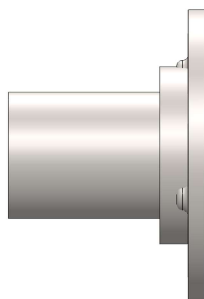
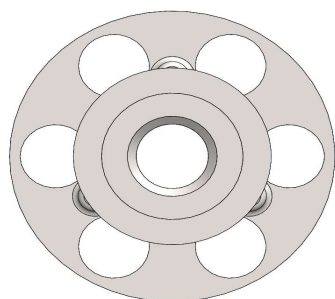
As Shown: F2-RB23-M6x10

F2 Female Threaded Collar

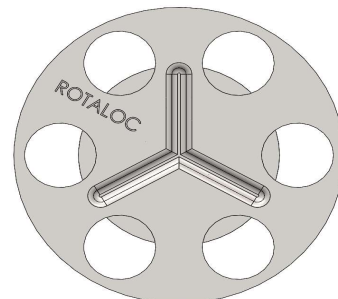
RB23 23 Millimeter Round Baseplate

Example - Part Number

F2-RB23-M6x10



Open (Thru)



Closed (Blind)

Thread	Common Thread Lengths - Inch							
M4	12mm	15mm	16mm	20mm	25mm	35mm	40mm	50mm
M5	12mm	15mm	16mm	20mm	25mm	35mm	40mm	50mm
M6	12mm	15mm	16mm	20mm	25mm	35mm	40mm	50mm
M8	12mm	15mm	16mm	20mm	25mm	35mm	40mm	50mm
M10	12mm	15mm	16mm	20mm	25mm	35mm	40mm	50mm
M12	12mm	15mm	16mm	20mm	25mm	35mm	40mm	50mm

* Grayed-out sizes are not recommended with shown baseplate

Plating	TZP (Trivalent Zinc)	Zinc-Nickel	Nano	E-Coat	Grades	303	304	316
Other plating and coating options					* Grayed-out sizes are not recommended with shown baseplate			

All plating and materials offered are RoHS and REACH Compliant

Availability

Many common sizes in stock. Call for availability.

A Rotaloc® Representative will be happy to discuss your specific application and product specifications.

Contact Rotaloc®

Contact Us:

Tel (303) 948-5434 or Toll Free (888) Rotaloc or (888)-768-2562
www.rotaloc.com | info@rotaloc.com

Address

Rotaloc International, LLC
 9903 Titan Court, Suite #15, Littleton, CO 80125 - USA

Value - Quality - Service



F2-RB32 Metric Thread

Bonding Fasteners

Rotaloc International, LLC

Sample Image



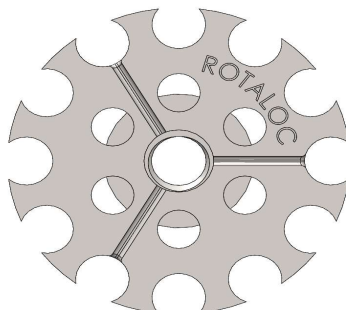
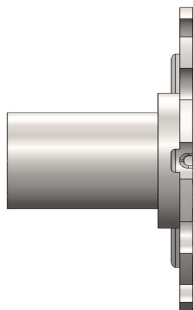
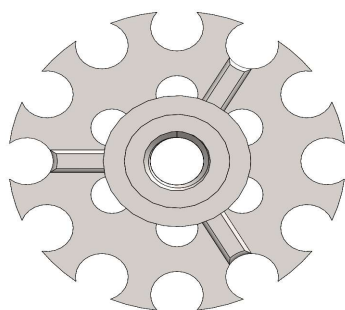
As Shown: F2-RB32-M6x16

F2 Female Threaded Collar

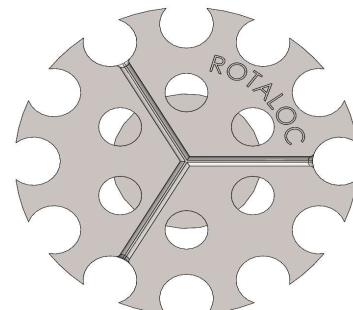
RB32 32 Millimeter Round Baseplate

Example - Part Number

F2-RB32-M6x16



Open (Thru)



Closed (Blind)

Thread	Common Thread Lengths - Inch							
M4	12mm	15mm	16mm	20mm	25mm	35mm	40mm	50mm
M5	12mm	15mm	16mm	20mm	25mm	35mm	40mm	50mm
M6	12mm	15mm	16mm	20mm	25mm	35mm	40mm	50mm
M8	12mm	15mm	16mm	20mm	25mm	35mm	40mm	50mm
M10	12mm	15mm	16mm	20mm	25mm	35mm	40mm	50mm
M12	12mm	15mm	16mm	20mm	25mm	35mm	40mm	50mm

* Grayed-out sizes are not recommended with shown baseplate

Plating	TZP (Trivalent Zinc)	Zinc-Nickel	Nano	E-Coat	Grades	303	304	316
Other plating and coating options					* Grayed-out sizes are not recommended with shown baseplate			

All plating and materials offered are RoHS and REACH Compliant

Availability

Many common sizes in stock. Call for availability.

A Rotaloc® Representative will be happy to discuss your specific application and product specifications.

Contact Rotaloc®

Contact Us:

Tel (303) 948-5434 or Toll Free (888) Rotaloc or (888)-768-2562
www.rotaloc.com | info@rotaloc.com

Address

Rotaloc International, LLC
 9903 Titan Court, Suite #15, Littleton, CO 80125 - USA

Value - Quality - Service



F2-RB32#4 Metric Thread

Bonding Fasteners

Rotaloc International, LLC

Sample Image



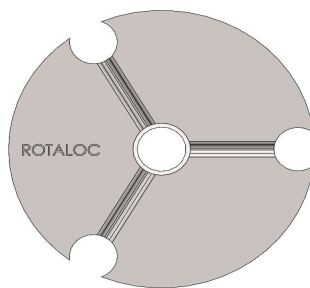
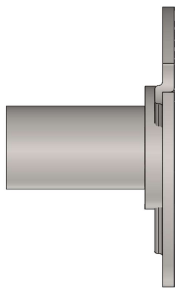
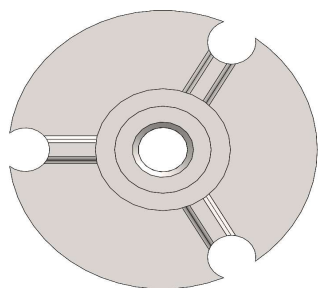
As Shown: F2-RB32#4-M6x16

F2 Female Threaded Collar

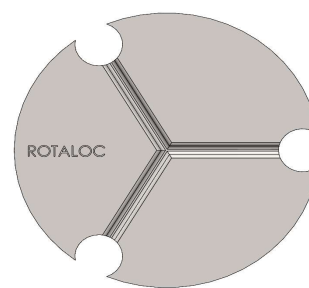
RB32#4 32 Millimeter Round Baseplate

Example - Part Number

F2-RB32#4-M6x16



Open (Thru)



Closed (Blind)

Thread	Common Thread Lengths - Inch							
M4	12mm	15mm	16mm	20mm	25mm	35mm	40mm	50mm
M5	12mm	15mm	16mm	20mm	25mm	35mm	40mm	50mm
M6	12mm	15mm	16mm	20mm	25mm	35mm	40mm	50mm
M8	12mm	15mm	16mm	20mm	25mm	35mm	40mm	50mm
M10	12mm	15mm	16mm	20mm	25mm	35mm	40mm	50mm
M12	12mm	15mm	16mm	20mm	25mm	35mm	40mm	50mm

* Grayed-out sizes are not recommended with shown baseplate

Plating	TZP (Trivalent Zinc)	Zinc-Nickel	Nano	E-Coat	Grades	303	304	316
Other plating and coating options					* Grayed-out sizes are not recommended with shown baseplate			

All plating and materials offered are RoHS and REACH Compliant

Availability

Many common sizes in stock. Call for availability.

A Rotaloc® Representative will be happy to discuss your specific application and product specifications.

Contact Rotaloc®

Contact Us:

Tel (303) 948-5434 or Toll Free (888) Rotaloc or (888)-768-2562
www.rotaloc.com | info@rotaloc.com

Address

Rotaloc International, LLC
 9903 Titan Court, Suite #15, Littleton, CO 80125 - USA

Value - Quality - Service



F2-RB38 Metric Thread Bonding Fasteners

Rotaloc International, LLC

Sample Image



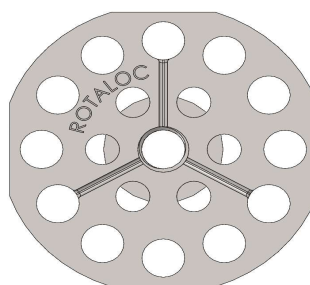
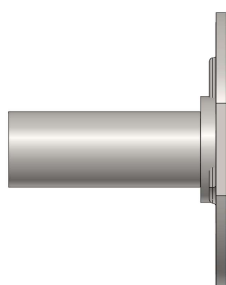
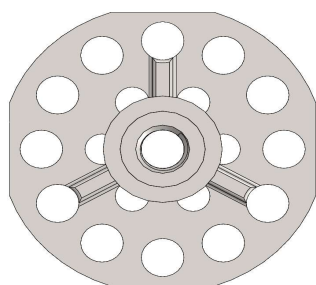
As Shown: F2-RB38-M6x25

F2 Female Threaded Collar

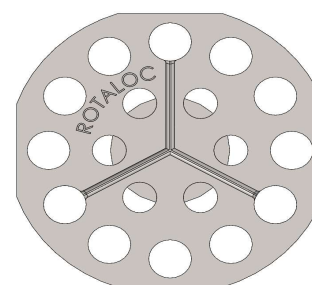
RB38 38 Millimeter Round Baseplate

Example - Part Number

F2-RB38-M6x25



Open (Thru)



Closed (Blind)

Thread	Common Thread Lengths - Inch							
M4	12mm	15mm	16mm	20mm	25mm	35mm	40mm	50mm
M5	12mm	15mm	16mm	20mm	25mm	35mm	40mm	50mm
M6	12mm	15mm	16mm	20mm	25mm	35mm	40mm	50mm
M8	12mm	15mm	16mm	20mm	25mm	35mm	40mm	50mm
M10	12mm	15mm	16mm	20mm	25mm	35mm	40mm	50mm
M12	12mm	15mm	16mm	20mm	25mm	35mm	40mm	50mm

* Grayed-out sizes are not recommended with shown baseplate

Plating	TZP (Trivalent Zinc)	Zinc-Nickel	Nano	E-Coat	Grades	303	304	316

Other plating and coating options

* Grayed-out sizes are not recommended with shown baseplate

All plating and materials offered are RoHS and REACH Compliant

Availability

Many common sizes in stock. Call for availability.

A Rotaloc® Representative will be happy to discuss your specific application and product specifications.

Contact Rotaloc®

Contact Us:

Tel (303) 948-5434 or Toll Free (888) Rotaloc or (888)-768-2562
www.rotaloc.com | info@rotaloc.com

Address

Rotaloc International, LLC
 9903 Titan Court, Suite #15, Littleton, CO 80125 - USA

Value - Quality - Service



F2-RB38#4 Metric Thread

Bonding Fasteners

Rotaloc International, LLC

Sample Image



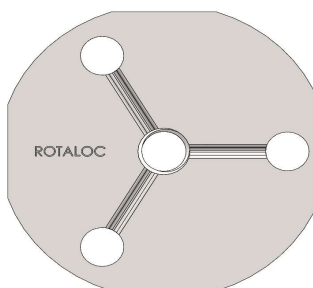
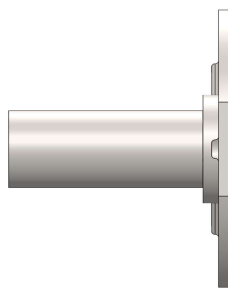
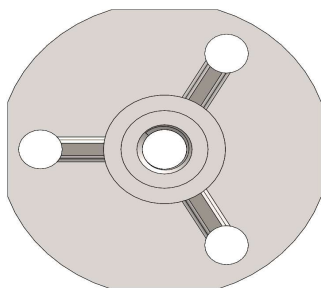
As Shown: F2-RB38#4-M6x25

F2 Female Threaded Collar

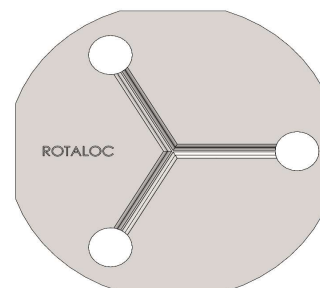
RB38#4 38 Millimeter Round Baseplate

Example - Part Number

F2-RB38#4-M6x25



Open (Thru)



Closed (Blind)

Thread	Common Thread Lengths - Inch							
M4	12mm	15mm	16mm	20mm	25mm	35mm	40mm	50mm
M5	12mm	15mm	16mm	20mm	25mm	35mm	40mm	50mm
M6	12mm	15mm	16mm	20mm	25mm	35mm	40mm	50mm
M8	12mm	15mm	16mm	20mm	25mm	35mm	40mm	50mm
M10	12mm	15mm	16mm	20mm	25mm	35mm	40mm	50mm
M12	12mm	15mm	16mm	20mm	25mm	35mm	40mm	50mm

* Grayed-out sizes are not recommended with shown baseplate

Plating	TZP (Trivalent Zinc)	Zinc-Nickel	Nano	E-Coat	Grades	303	304	316
Other plating and coating options					* Grayed-out sizes are not recommended with shown baseplate			

All plating and materials offered are RoHS and REACH Compliant

Availability

Many common sizes in stock. Call for availability.

A Rotaloc® Representative will be happy to discuss your specific application and product specifications.

Contact Rotaloc®

Contact Us:

Tel (303) 948-5434 or Toll Free (888) Rotaloc or (888)-768-2562
www.rotaloc.com | info@rotaloc.com

Address

Rotaloc International, LLC
 9903 Titan Court, Suite #15, Littleton, CO 80125 - USA

Value - Quality - Service



F2-RB38Barb Metric Thread

Bonding Fasteners

Rotaloc International, LLC

Sample Image



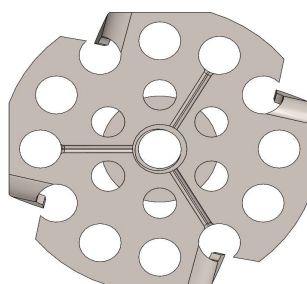
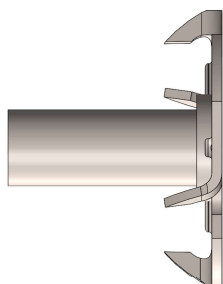
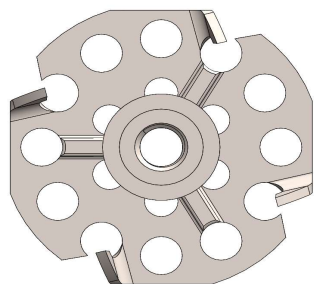
As Shown: F2-RB38Barb-M6x25

F2 Female Threaded Collar

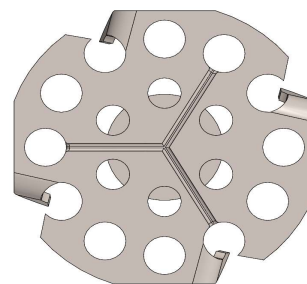
RB38Barb 38 Millimeter Round Baseplate

Example - Part Number

F2-RB38Barb-M6x25



Open (Thru)



Closed (Blind)

Thread	Common Thread Lengths - Inch							
M4	12mm	15mm	16mm	20mm	25mm	35mm	40mm	50mm
M5	12mm	15mm	16mm	20mm	25mm	35mm	40mm	50mm
M6	12mm	15mm	16mm	20mm	25mm	35mm	40mm	50mm
M8	12mm	15mm	16mm	20mm	25mm	35mm	40mm	50mm
M10	12mm	15mm	16mm	20mm	25mm	35mm	40mm	50mm
M12	12mm	15mm	16mm	20mm	25mm	35mm	40mm	50mm

* Grayed-out sizes are not recommended with shown baseplate

Plating	TZP (Trivalent Zinc)	Zinc-Nickel	Nano	E-Coat	Grades	303	304	316
Other plating and coating options					* Grayed-out sizes are not recommended with shown baseplate			

All plating and materials offered are RoHS and REACH Compliant

Availability

Many common sizes in stock. Call for availability.

A Rotaloc® Representative will be happy to discuss your specific application and product specifications.

Contact Rotaloc®

Contact Us:

Tel (303) 948-5434 or Toll Free (888) Rotaloc or (888)-768-2562
www.rotaloc.com | info@rotaloc.com

Address

Rotaloc International, LLC
 9903 Titan Court, Suite #15, Littleton, CO 80125 - USA

Value - Quality - Service



F2-RB50 Metric Thread Bonding Fasteners

Rotaloc International, LLC

Sample Image



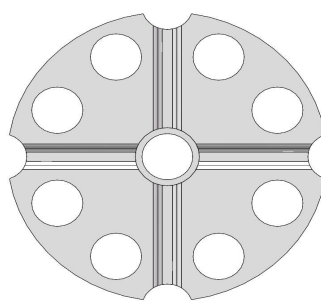
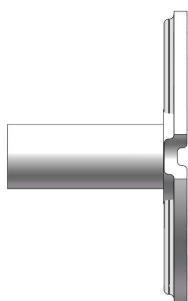
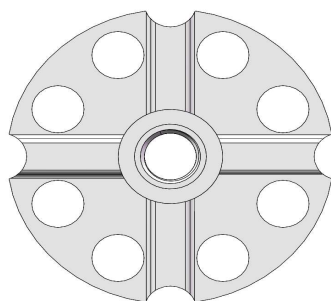
As Shown: F2-RB50-M8x25

F2 Female Threaded Collar

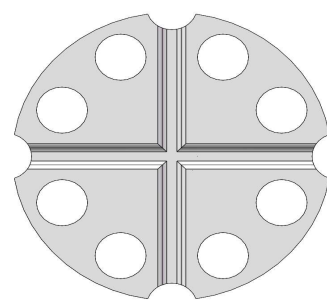
RB50 50 Millimeter Round Baseplate

Example - Part Number

F2-RB50-M8x25



Open (Thru)



Closed (Blind)

Thread	Common Thread Lengths - Inch							
M4	12mm	15mm	16mm	20mm	25mm	35mm	40mm	50mm
M5	12mm	15mm	16mm	20mm	25mm	35mm	40mm	50mm
M6	12mm	15mm	16mm	20mm	25mm	35mm	40mm	50mm
M8	12mm	15mm	16mm	20mm	25mm	35mm	40mm	50mm
M10	12mm	15mm	16mm	20mm	25mm	35mm	40mm	50mm
M12	12mm	15mm	16mm	20mm	25mm	35mm	40mm	50mm

* Grayed-out sizes are not recommended with shown baseplate

Plating	TZP (Trivalent Zinc)	Zinc-Nickel	Nano	E-Coat	Grades	303	304	316
Other plating and coating options					* Grayed-out sizes are not recommended with shown baseplate			

All plating and materials offered are RoHS and REACH Compliant

Availability

Many common sizes in stock. Call for availability.

A Rotaloc® Representative will be happy to discuss your specific application and product specifications.

Contact Rotaloc®

Contact Us:

Tel (303) 948-5434 or Toll Free (888) Rotaloc or (888)-768-2562
www.rotaloc.com | info@rotaloc.com

Address

Rotaloc International, LLC
 9903 Titan Court, Suite #15, Littleton, CO 80125 - USA

Value - Quality - Service

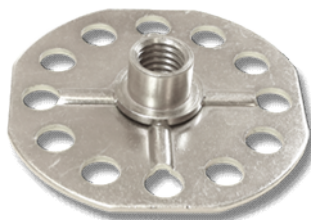


F2-RB76 Metric Thread

Bonding Fasteners

Rotaloc International, LLC

Sample Image



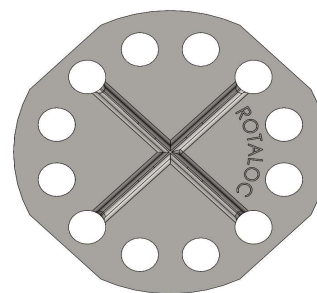
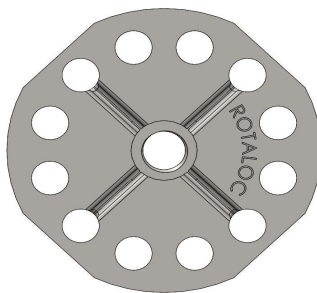
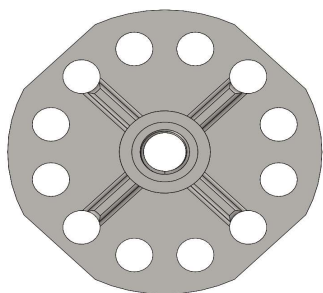
As Shown: F2-RB76-M12x15

F2 Female Threaded Collar

RB76 76 Millimeter Round Baseplate

Example - Part Number

F2-RB76-M12x15



Open (Thru)

Closed (Blind)

Thread	Common Thread Lengths - Inch							
M4	12mm	15mm	16mm	20mm	25mm	35mm	40mm	50mm
M5	12mm	15mm	16mm	20mm	25mm	35mm	40mm	50mm
M6	12mm	15mm	16mm	20mm	25mm	35mm	40mm	50mm
M8	12mm	15mm	16mm	20mm	25mm	35mm	40mm	50mm
M10	12mm	15mm	16mm	20mm	25mm	35mm	40mm	50mm
M12	12mm	15mm	16mm	20mm	25mm	35mm	40mm	50mm

* Grayed-out sizes are not recommended with shown baseplate

Plating	TZP (Trivalent Zinc)	Zinc-Nickel	Nano	E-Coat	Grades	303	304	316
Other plating and coating options					* Grayed-out sizes are not recommended with shown baseplate			

All plating and materials offered are RoHS and REACH Compliant

Availability

Many common sizes in stock. Call for availability.

A Rotaloc® Representative will be happy to discuss your specific application and product specifications.

Contact Rotaloc®

Contact Us:

Tel (303) 948-5434 or Toll Free (888) Rotaloc or (888)-768-2562
www.rotaloc.com | info@rotaloc.com

Address

Rotaloc International, LLC
 9903 Titan Court, Suite #15, Littleton, CO 80125 - USA

Value - Quality - Service



F2-SB15 Metric Thread

Bonding Fasteners

Rotaloc International, LLC

Sample Image



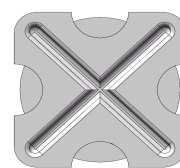
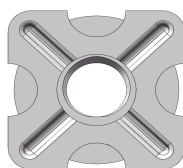
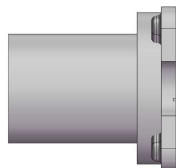
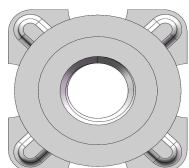
As Shown: F2-SB15-M6x12

F2 Female Threaded Collar

SB15 15 Millimeter Square Baseplate

Example - Part Number

F2-SB15-M6x12



Open (Thru)

Closed (Blind)

Thread	Common Thread Lengths - Inch							
M4	12mm	15mm	16mm	20mm	25mm	35mm	40mm	50mm
M5	12mm	15mm	16mm	20mm	25mm	35mm	40mm	50mm
M6	12mm	15mm	16mm	20mm	25mm	35mm	40mm	50mm
M8	12mm	15mm	16mm	20mm	25mm	35mm	40mm	50mm
M10	12mm	15mm	16mm	20mm	25mm	35mm	40mm	50mm
M12	12mm	15mm	16mm	20mm	25mm	35mm	40mm	50mm

* Grayed-out sizes are not recommended with shown baseplate

Plating	TZP (Trivalent Zinc)	Zinc-Nickel	Nano	E-Coat	Grades	303	304	316
Other plating and coating options					* Grayed-out sizes are not recommended with shown baseplate			

All plating and materials offered are RoHS and REACH Compliant

Availability

Many common sizes in stock. Call for availability.

A Rotaloc® Representative will be happy to discuss your specific application and product specifications.

Contact Rotaloc®

Contact Us:

Tel (303) 948-5434 or Toll Free (888) Rotaloc or (888)-768-2562
www.rotaloc.com | info@rotaloc.com

Address

Rotaloc International, LLC
 9903 Titan Court, Suite #15, Littleton, CO 80125 - USA

Value - Quality - Service



F2-SB30 Metric Thread Bonding Fasteners

Rotaloc International, LLC

Sample Image



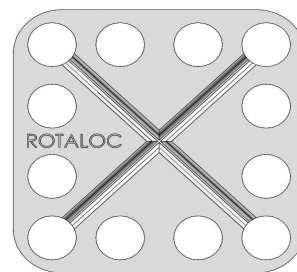
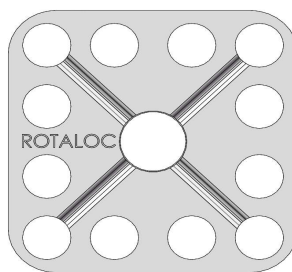
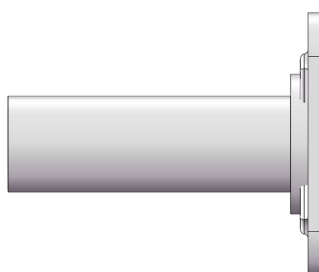
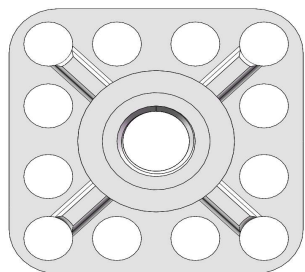
As Shown: F2-SB30-M8x35

F2 Female Threaded Collar

SB30 30 Millimeter Square Baseplate

Example - Part Number

F2-SB30-M8x35



Open (Thru)

Closed (Blind)

Thread	Common Thread Lengths - Inch							
M4	12mm	15mm	16mm	20mm	25mm	35mm	40mm	50mm
M5	12mm	15mm	16mm	20mm	25mm	35mm	40mm	50mm
M6	12mm	15mm	16mm	20mm	25mm	35mm	40mm	50mm
M8	12mm	15mm	16mm	20mm	25mm	35mm	40mm	50mm
M10	12mm	15mm	16mm	20mm	25mm	35mm	40mm	50mm
M12	12mm	15mm	16mm	20mm	25mm	35mm	40mm	50mm

* Grayed-out sizes are not recommended with shown baseplate

Plating	TZP (Trivalent Zinc)	Zinc-Nickel	Nano	E-Coat	Grades	303	304	316
Other plating and coating options					* Grayed-out sizes are not recommended with shown baseplate			

All plating and materials offered are RoHS and REACH Compliant

Availability

Many common sizes in stock. Call for availability.

A Rotaloc® Representative will be happy to discuss your specific application and product specifications.

Contact Rotaloc®

Contact Us:

Tel (303) 948-5434 or Toll Free (888) Rotaloc or (888)-768-2562
www.rotaloc.com | info@rotaloc.com

Address

Rotaloc International, LLC
 9903 Titan Court, Suite #15, Littleton, CO 80125 - USA

Value - Quality - Service



F2-SB32 Metric Thread Bonding Fasteners

Rotaloc International, LLC

Sample Image



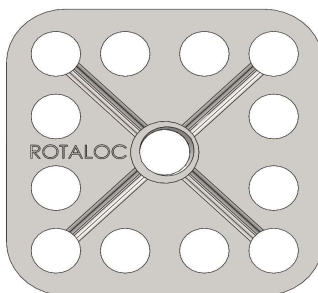
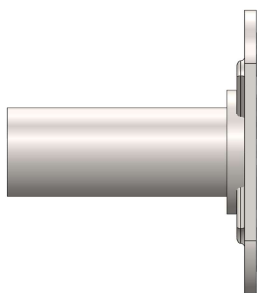
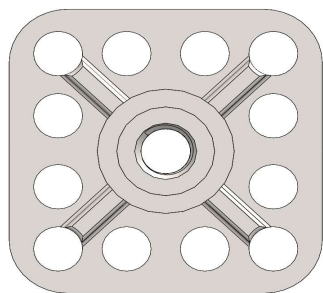
As Shown: F2-SB32-M6x25

F2 Female Threaded Collar

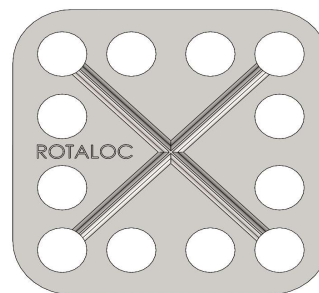
SB32 32 Millimeter Square Baseplate

Example - Part Number

F2-SB32-M6x25



Open (Thru)



Closed (Blind)

Thread	Common Thread Lengths - Inch							
M4	12mm	15mm	16mm	20mm	25mm	35mm	40mm	50mm
M5	12mm	15mm	16mm	20mm	25mm	35mm	40mm	50mm
M6	12mm	15mm	16mm	20mm	25mm	35mm	40mm	50mm
M8	12mm	15mm	16mm	20mm	25mm	35mm	40mm	50mm
M10	12mm	15mm	16mm	20mm	25mm	35mm	40mm	50mm
M12	12mm	15mm	16mm	20mm	25mm	35mm	40mm	50mm

* Grayed-out sizes are not recommended with shown baseplate

Plating	TZP (Trivalent Zinc)	Zinc-Nickel	Nano	E-Coat	Grades	303	304	316
Other plating and coating options					* Grayed-out sizes are not recommended with shown baseplate			

All plating and materials offered are RoHS and REACH Compliant

Availability

Many common sizes in stock. Call for availability.

A Rotaloc® Representative will be happy to discuss your specific application and product specifications.

Contact Rotaloc®

Contact Us:

Tel (303) 948-5434 or Toll Free (888) Rotaloc or (888)-768-2562
www.rotaloc.com | info@rotaloc.com

Address

Rotaloc International, LLC
 9903 Titan Court, Suite #15, Littleton, CO 80125 - USA

Value - Quality - Service



F2-SB50 Metric Thread Bonding Fasteners

Rotaloc International, LLC

Sample Image



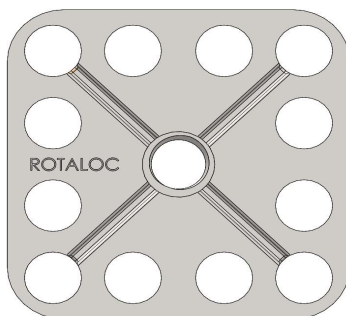
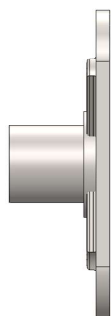
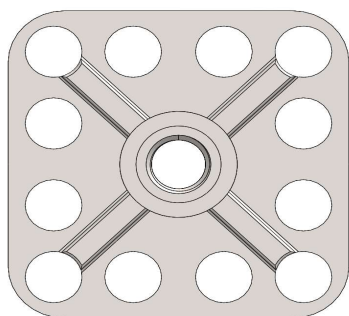
As Shown: F2-SB50-M10x15

F2 Female Threaded Collar

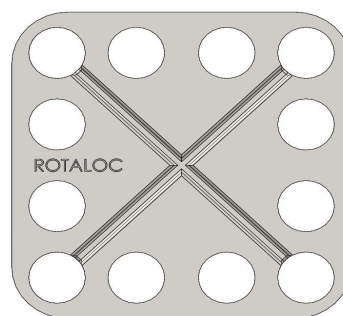
SB50 50 Millimeter Square Baseplate

Example - Part Number

F2-SB50-M10x15



Open (Thru)



Closed (Blind)

Thread	Common Thread Lengths - Inch							
M4	12mm	15mm	16mm	20mm	25mm	35mm	40mm	50mm
M5	12mm	15mm	16mm	20mm	25mm	35mm	40mm	50mm
M6	12mm	15mm	16mm	20mm	25mm	35mm	40mm	50mm
M8	12mm	15mm	16mm	20mm	25mm	35mm	40mm	50mm
M10	12mm	15mm	16mm	20mm	25mm	35mm	40mm	50mm
M12	12mm	15mm	16mm	20mm	25mm	35mm	40mm	50mm

* Grayed-out sizes are not recommended with shown baseplate

Plating	TZP (Trivalent Zinc)	Zinc-Nickel	Nano	E-Coat	Grades	303	304	316
Other plating and coating options					* Grayed-out sizes are not recommended with shown baseplate			

All plating and materials offered are RoHS and REACH Compliant

Availability

Many common sizes in stock. Call for availability.

A Rotaloc® Representative will be happy to discuss your specific application and product specifications.

Contact Rotaloc®

Contact Us:

Tel (303) 948-5434 or Toll Free (888) Rotaloc or (888)-768-2562
www.rotaloc.com | info@rotaloc.com

Address

Rotaloc International, LLC
 9903 Titan Court, Suite #15, Littleton, CO 80125 - USA

Value - Quality - Service



F2-SB50rw Metric Thread

Bonding Fasteners

Rotaloc International, LLC

Sample Image



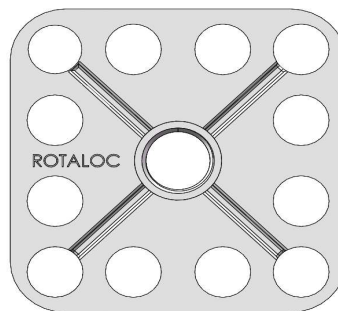
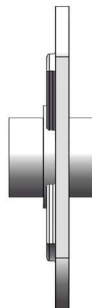
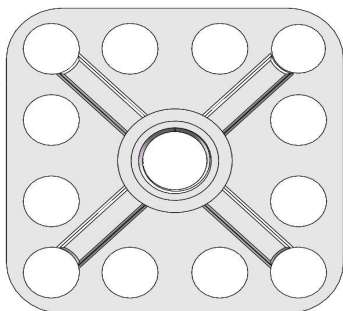
As Shown: F2-SB50rw-M10x15

F2 Female Threaded Collar

SB50rw 50 Millimeter Square Baseplate

Example - Part Number

F2-SB50rw-M10x15



Open (Thru)

Thread	Common Thread Lengths - Inch							
M4	12mm	15mm	16mm	20mm	25mm	35mm	40mm	50mm
M5	12mm	15mm	16mm	20mm	25mm	35mm	40mm	50mm
M6	12mm	15mm	16mm	20mm	25mm	35mm	40mm	50mm
M8	12mm	15mm	16mm	20mm	25mm	35mm	40mm	50mm
M10	12mm	15mm	16mm	20mm	25mm	35mm	40mm	50mm
M12	12mm	15mm	16mm	20mm	25mm	35mm	40mm	50mm

* Grayed-out sizes are not recommended with shown baseplate

Plating	TZP (Trivalent Zinc)	Zinc-Nickel	Nano	E-Coat	Grades	303	304	316
Other plating and coating options					* Grayed-out sizes are not recommended with shown baseplate			

All plating and materials offered are RoHS and REACH Compliant

Availability

Many common sizes in stock. Call for availability.

A Rotaloc® Representative will be happy to discuss your specific application and product specifications.

Contact Rotaloc®

Contact Us:

Tel (303) 948-5434 or Toll Free (888) Rotaloc or (888)-768-2562
www.rotaloc.com | info@rotaloc.com

Address

Rotaloc International, LLC
 9903 Titan Court, Suite #15, Littleton, CO 80125 - USA

Value - Quality - Service



F2-T24x11.5 Metric Thread Bonding Fasteners

Rotaloc International, LLC

Sample Image



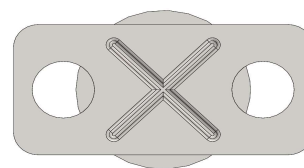
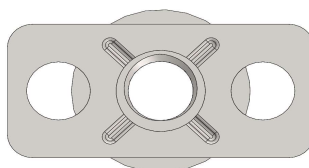
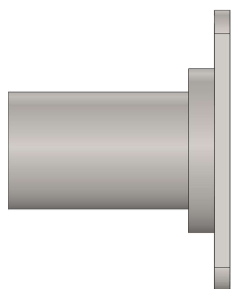
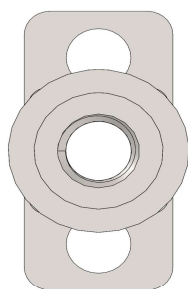
As Shown: F2-T24x11.5-M6x16

F2 Female Threaded Collar

T24x11.5 24x11.5 Millimeter Rectangular Baseplate

Example - Part Number

F2-T24x11.5-M6x16



Open (Thru)

Closed (Blind)

Thread	Common Thread Lengths - Inch							
M4	12mm	15mm	16mm	20mm	25mm	35mm	40mm	50mm
M5	12mm	15mm	16mm	20mm	25mm	35mm	40mm	50mm
M6	12mm	15mm	16mm	20mm	25mm	35mm	40mm	50mm
M8	12mm	15mm	16mm	20mm	25mm	35mm	40mm	50mm
M10	12mm	15mm	16mm	20mm	25mm	35mm	40mm	50mm
M12	12mm	15mm	16mm	20mm	25mm	35mm	40mm	50mm

* Grayed-out sizes are not recommended with shown baseplate

Plating	TZP (Trivalent Zinc)	Zinc-Nickel	Nano	E-Coat	Grades	303	304	316
Other plating and coating options					* Grayed-out sizes are not recommended with shown baseplate			

All plating and materials offered are RoHS and REACH Compliant

Availability

Many common sizes in stock. Call for availability.

A Rotaloc® Representative will be happy to discuss your specific application and product specifications.

Contact Rotaloc®

Contact Us:

Tel (303) 948-5434 or Toll Free (888) Rotaloc or (888)-768-2562
www.rotaloc.com | info@rotaloc.com

Address

Rotaloc International, LLC
 9903 Titan Court, Suite #15, Littleton, CO 80125 - USA

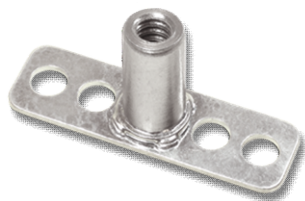
Value - Quality - Service



F2-T38x11.5 Metric Thread Bonding Fasteners

Rotaloc International, LLC

Sample Image



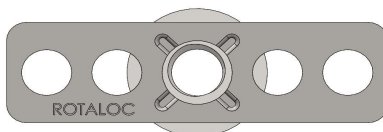
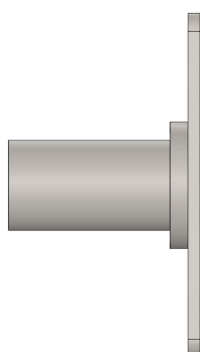
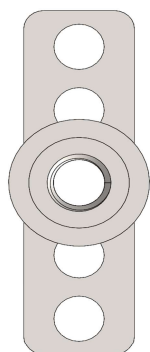
As Shown: F2-T38x11.5-M6x20

F2 Female Threaded Collar

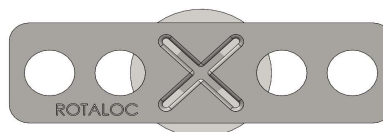
T38x11.5 38x11.5 Millimeter Rectangular Baseplate

Example - Part Number

F2-T38x11.5-M6x20



Open (Thru)



Closed (Blind)

Thread	Common Thread Lengths - Inch							
M4	12mm	15mm	16mm	20mm	25mm	35mm	40mm	50mm
M5	12mm	15mm	16mm	20mm	25mm	35mm	40mm	50mm
M6	12mm	15mm	16mm	20mm	25mm	35mm	40mm	50mm
M8	12mm	15mm	16mm	20mm	25mm	35mm	40mm	50mm
M10	12mm	15mm	16mm	20mm	25mm	35mm	40mm	50mm
M12	12mm	15mm	16mm	20mm	25mm	35mm	40mm	50mm

* Grayed-out sizes are not recommended with shown baseplate

Plating	TZP (Trivalent Zinc)	Zinc-Nickel	Nano	E-Coat	Grades	303	304	316
Other plating and coating options					* Grayed-out sizes are not recommended with shown baseplate			

All plating and materials offered are RoHS and REACH Compliant

Availability

Many common sizes in stock. Call for availability.

A Rotaloc® Representative will be happy to discuss your specific application and product specifications.

Contact Rotaloc®

Contact Us:

Tel (303) 948-5434 or Toll Free (888) Rotaloc or (888)-768-2562
www.rotaloc.com | info@rotaloc.com

Address

Rotaloc International, LLC
 9903 Titan Court, Suite #15, Littleton, CO 80125 - USA

Value - Quality - Service

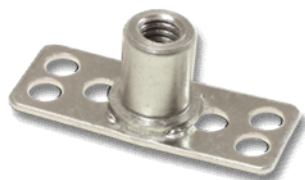


F2-T38x15 Metric Thread

Bonding Fasteners

Rotaloc International, LLC

Sample Image



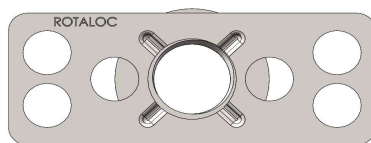
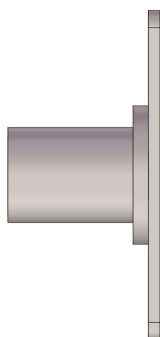
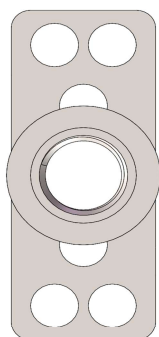
As Shown: F2-T38x15-M8x16

F2 Female Threaded Collar

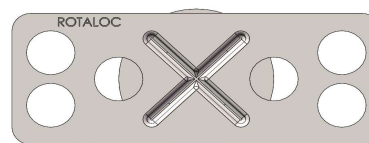
T38x15 38x15 Millimeter Rectangular Baseplate

Example - Part Number

F2-T38x15-M8x16



Open (Thru)



Closed (Blind)

Thread	Common Thread Lengths - Inch							
M4	12mm	15mm	16mm	20mm	25mm	35mm	40mm	50mm
M5	12mm	15mm	16mm	20mm	25mm	35mm	40mm	50mm
M6	12mm	15mm	16mm	20mm	25mm	35mm	40mm	50mm
M8	12mm	15mm	16mm	20mm	25mm	35mm	40mm	50mm
M10	12mm	15mm	16mm	20mm	25mm	35mm	40mm	50mm
M12	12mm	15mm	16mm	20mm	25mm	35mm	40mm	50mm

* Grayed-out sizes are not recommended with shown baseplate

Plating	TZP (Trivalent Zinc)	Zinc-Nickel	Nano	E-Coat	Grades	303	304	316
Other plating and coating options					* Grayed-out sizes are not recommended with shown baseplate			

All plating and materials offered are RoHS and REACH Compliant

Availability

Many common sizes in stock. Call for availability.

A Rotaloc® Representative will be happy to discuss your specific application and product specifications.

Contact Rotaloc®

Contact Us:

Tel (303) 948-5434 or Toll Free (888) Rotaloc or (888)-768-2562
www.rotaloc.com | info@rotaloc.com

Address

Rotaloc International, LLC
 9903 Titan Court, Suite #15, Littleton, CO 80125 - USA

Value - Quality - Service



F2-T38x19 Metric Thread Bonding Fasteners

Rotaloc International, LLC

Sample Image



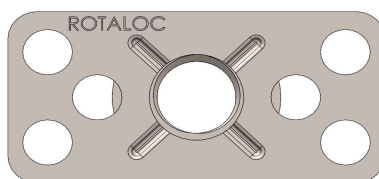
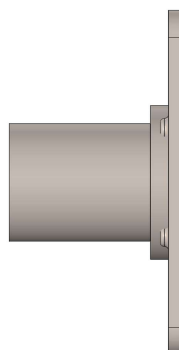
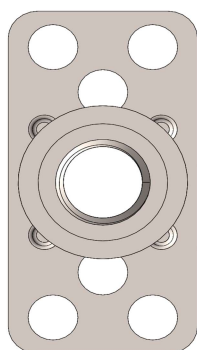
As Shown: F2-T38x19-M10x15

F2 Female Threaded Collar

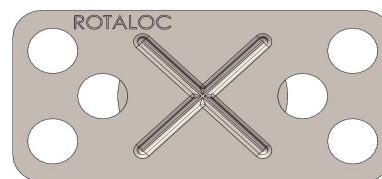
T38x19 38x19 Millimeter Rectangular Baseplate

Example - Part Number

F2-T38x19-M10x15



Open (Thru)



Closed (Blind)

Thread	Common Thread Lengths - Inch							
M4	12mm	15mm	16mm	20mm	25mm	35mm	40mm	50mm
M5	12mm	15mm	16mm	20mm	25mm	35mm	40mm	50mm
M6	12mm	15mm	16mm	20mm	25mm	35mm	40mm	50mm
M8	12mm	15mm	16mm	20mm	25mm	35mm	40mm	50mm
M10	12mm	15mm	16mm	20mm	25mm	35mm	40mm	50mm
M12	12mm	15mm	16mm	20mm	25mm	35mm	40mm	50mm

* Grayed-out sizes are not recommended with shown baseplate

Plating	TZP (Trivalent Zinc)	Zinc-Nickel	Nano	E-Coat	Grades	303	304	316
Other plating and coating options					* Grayed-out sizes are not recommended with shown baseplate			

All plating and materials offered are RoHS and REACH Compliant

Availability

Many common sizes in stock. Call for availability.

A Rotaloc® Representative will be happy to discuss your specific application and product specifications.

Contact Rotaloc®

Contact Us:

Tel (303) 948-5434 or Toll Free (888) Rotaloc or (888)-768-2562
www.rotaloc.com | info@rotaloc.com

Address

Rotaloc International, LLC
 9903 Titan Court, Suite #15, Littleton, CO 80125 - USA

Value - Quality - Service



F2-T40x10 Metric Thread Bonding Fasteners

Rotaloc International, LLC

Sample Image



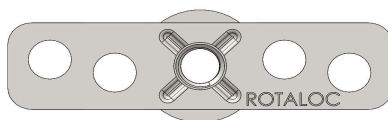
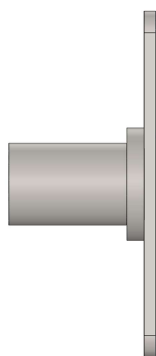
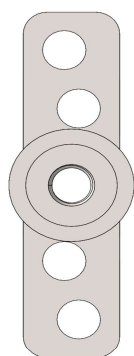
As Shown: F2-T40x10-M5x16

F2 Female Threaded Collar

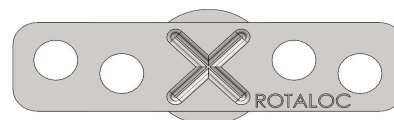
T40x10 40x10 Millimeter Rectangular Baseplate

Example - Part Number

F2-T40x10-M5x16



Open (Thru)



Closed (Blind)

Thread	Common Thread Lengths - Inch							
M4	12mm	15mm	16mm	20mm	25mm	35mm	40mm	50mm
M5	12mm	15mm	16mm	20mm	25mm	35mm	40mm	50mm
M6	12mm	15mm	16mm	20mm	25mm	35mm	40mm	50mm
M8	12mm	15mm	16mm	20mm	25mm	35mm	40mm	50mm
M10	12mm	15mm	16mm	20mm	25mm	35mm	40mm	50mm
M12	12mm	15mm	16mm	20mm	25mm	35mm	40mm	50mm

* Grayed-out sizes are not recommended with shown baseplate

Plating	TZP (Trivalent Zinc)	Zinc-Nickel	Nano	E-Coat	Grades	303	304	316
Other plating and coating options					* Grayed-out sizes are not recommended with shown baseplate			

All plating and materials offered are RoHS and REACH Compliant

Availability

Many common sizes in stock. Call for availability.

A Rotaloc® Representative will be happy to discuss your specific application and product specifications.

Contact Rotaloc®

Contact Us:

Tel (303) 948-5434 or Toll Free (888) Rotaloc or (888)-768-2562
www.rotaloc.com | info@rotaloc.com

Address

Rotaloc International, LLC
 9903 Titan Court, Suite #15, Littleton, CO 80125 - USA

Value - Quality - Service



F2-T50x15 Metric Thread Bonding Fasteners

Rotaloc International, LLC

Sample Image



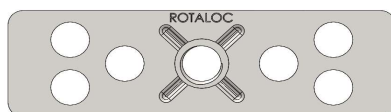
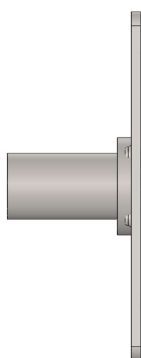
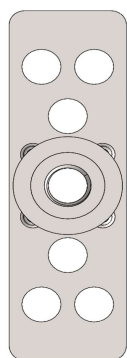
As Shown: F2-T50x15-M6x16

F2 Female Threaded Collar

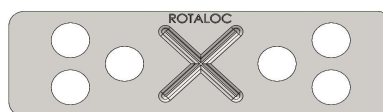
T50x15 50x15 Millimeter Rectangular Baseplate

Example - Part Number

F2-T50x15-M6x16



Open (Thru)



Closed (Blind)

Thread	Common Thread Lengths - Inch							
M4	12mm	15mm	16mm	20mm	25mm	35mm	40mm	50mm
M5	12mm	15mm	16mm	20mm	25mm	35mm	40mm	50mm
M6	12mm	15mm	16mm	20mm	25mm	35mm	40mm	50mm
M8	12mm	15mm	16mm	20mm	25mm	35mm	40mm	50mm
M10	12mm	15mm	16mm	20mm	25mm	35mm	40mm	50mm
M12	12mm	15mm	16mm	20mm	25mm	35mm	40mm	50mm

* Grayed-out sizes are not recommended with shown baseplate

Plating	TZP (Trivalent Zinc)	Zinc-Nickel	Nano	E-Coat	Grades	303	304	316
Other plating and coating options					* Grayed-out sizes are not recommended with shown baseplate			

All plating and materials offered are RoHS and REACH Compliant

Availability

Many common sizes in stock. Call for availability.

A Rotaloc® Representative will be happy to discuss your specific application and product specifications.

Contact Rotaloc®

Contact Us:

Tel (303) 948-5434 or Toll Free (888) Rotaloc or (888)-768-2562
www.rotaloc.com | info@rotaloc.com

Address

Rotaloc International, LLC
 9903 Titan Court, Suite #15, Littleton, CO 80125 - USA

Value - Quality - Service



F2-T76x38 Metric Thread Bonding Fasteners

Rotaloc International, LLC

Sample Image



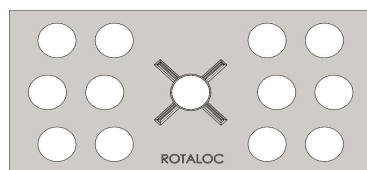
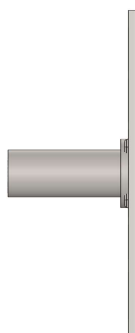
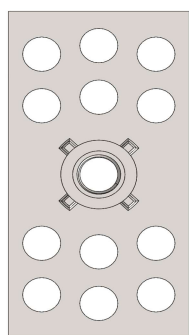
As Shown: F2-T76x38-M8x25

F2 Female Threaded Collar

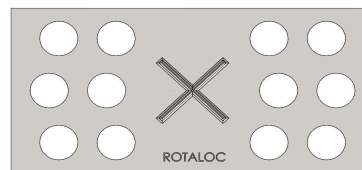
T76x38 76x38 Millimeter Rectangular Baseplate

Example - Part Number

F2-T76x38-M8x25



Open (Thru)



Closed (Blind)

Thread	Common Thread Lengths - Inch							
M4	12mm	15mm	16mm	20mm	25mm	35mm	40mm	50mm
M5	12mm	15mm	16mm	20mm	25mm	35mm	40mm	50mm
M6	12mm	15mm	16mm	20mm	25mm	35mm	40mm	50mm
M8	12mm	15mm	16mm	20mm	25mm	35mm	40mm	50mm
M10	12mm	15mm	16mm	20mm	25mm	35mm	40mm	50mm
M12	12mm	15mm	16mm	20mm	25mm	35mm	40mm	50mm

* Grayed-out sizes are not recommended with shown baseplate

Plating	TZP (Trivalent Zinc)	Zinc-Nickel	Nano	E-Coat	Grades	303	304	316
Other plating and coating options					* Grayed-out sizes are not recommended with shown baseplate			

All plating and materials offered are RoHS and REACH Compliant

Availability

Many common sizes in stock. Call for availability.

A Rotaloc® Representative will be happy to discuss your specific application and product specifications.

Contact Rotaloc®

Contact Us:

Tel (303) 948-5434 or Toll Free (888) Rotaloc or (888)-768-2562
www.rotaloc.com | info@rotaloc.com

Address

Rotaloc International, LLC
 9903 Titan Court, Suite #15, Littleton, CO 80125 - USA

Value - Quality - Service



F2-HP44 Metric Thread Bonding Fasteners

Rotaloc International, LLC

Sample Image



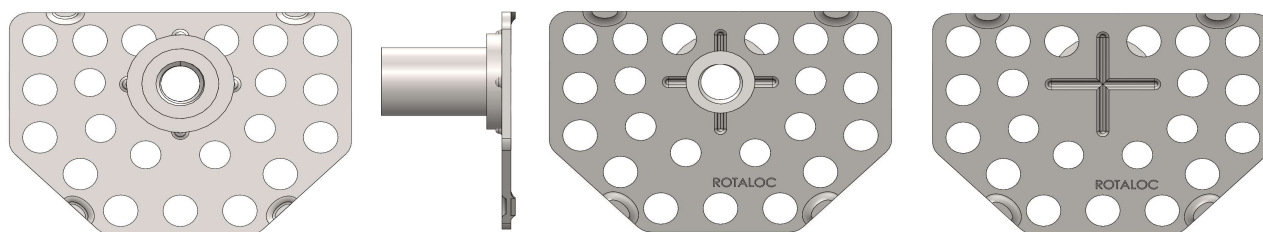
As Shown: F2-HP44-M6x16

F2 Female Threaded Collar

HP44 44 Millimeter Homeplate Like Baseplate

Example - Part Number

F2-HP44-M6x16



Open (Thru)

Closed (Blind)

Thread	Common Thread Lengths - Inch							
M4	12mm	15mm	16mm	20mm	25mm	35mm	40mm	50mm
M5	12mm	15mm	16mm	20mm	25mm	35mm	40mm	50mm
M6	12mm	15mm	16mm	20mm	25mm	35mm	40mm	50mm
M8	12mm	15mm	16mm	20mm	25mm	35mm	40mm	50mm
M10	12mm	15mm	16mm	20mm	25mm	35mm	40mm	50mm
M12	12mm	15mm	16mm	20mm	25mm	35mm	40mm	50mm

* Grayed-out sizes are not recommended with shown baseplate

Plating	TZP (Trivalent Zinc)	Zinc-Nickel	Nano	E-Coat	Grades	303	304	316
Other plating and coating options					* Grayed-out sizes are not recommended with shown baseplate			

All plating and materials offered are RoHS and REACH Compliant

Availability

Many common sizes in stock. Call for availability.

A Rotaloc® Representative will be happy to discuss your specific application and product specifications.

Contact Rotaloc®

Contact Us:

Tel (303) 948-5434 or Toll Free (888) Rotaloc or (888)-768-2562
www.rotaloc.com | info@rotaloc.com

Address

Rotaloc International, LLC
 9903 Titan Court, Suite #15, Littleton, CO 80125 - USA

Value - Quality - Service