

F2-RB19



19mm dia. Round Baseplate

F2-RB23



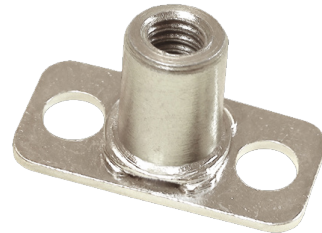
23mm Round Baseplate

F2-RB23-RotO



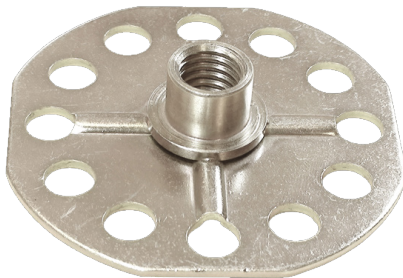
23mm Roto-Style Round Baseplate

F2-T24x11.5



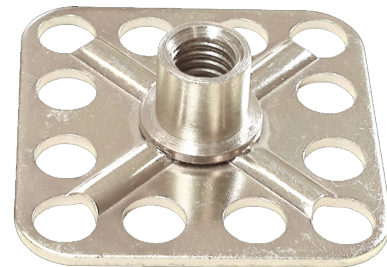
24mm x 11.5mm Rectangular Baseplate

F2-RB76



76mm Round Baseplate

F2-SB50



50mm Square Baseplate

Common Materials

- Stainless Steel
 - SS#304
 - SS#304L
 - SS#316
- Zinc-Plated Steel
- Titanium

Common Finishes



*Other plating and coating options available

- All plating and coating options are RoHS and REACH compliant
- Platings & Finishes made according to customer specifications
- Improved corrosion resistance

Turn this page over to build you own **Rotaloc® F2**

Common Baseplates*

(number correlates to baseplate size in millimeters)

*Ask us about additional options

SB15 	XB15 	RB16 	RB19 	RB20 	T22x16 	RB23 	T24x11.5 	XB27 	RB27
T28x16 	SB30 	SB32 	RB32 	RB32#4 	T38x11 	T38x15 	T38x19 	RB38 	RB38-B
RB38#4 	T40x10 	HP44 	T48x41 	T50x15 	SB50 	RB50 	T54x27 	T76x38 	RB76

Common Threads - **Inch**

Thread	8-32	10-24	10-32	1/4-20	5/16-18	3/8-16	1/2-13	5/8-11
--------	------	-------	-------	--------	---------	--------	--------	--------

Common Thread Lengths - **Inch**

Thread Length	.250"	.375"	.500"	.625"	.750"	.875"	1.00"	1.25"	1.50"	2.00"	2.50"	3.00"
---------------	-------	-------	-------	-------	-------	-------	-------	-------	-------	-------	-------	-------

Common Threads - **Metric**

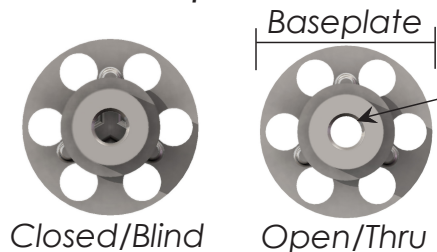
Thread	M4	M5	M6	M8	M10	M12
--------	----	----	----	----	-----	-----

Common Thread Lengths - **Metric**

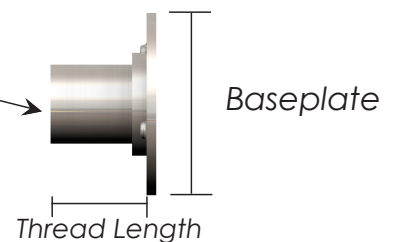
Thread Length	12mm	15mm	16mm	20mm	25mm	35mm	40mm	50mm	60mm	75mm
---------------	------	------	------	------	------	------	------	------	------	------

*Certain thread sizes are not recommended for all baseplates. Please call or visit www.rotaloc.com for more information.

Top View



Side View



*RB23 shown to scale

BP	Thd	TL
Baseplate Size	Thread	Thread Length

Rotaloc® offers additional sizes and custom options. Not all sizes currently in stock. Call today to discuss your next project's requirements.

Example Part Number: F2-RB23-1/4-20x0.750" - Female - Round Baseplate 23mm - 1/4-20 Thread x 0.750" Length