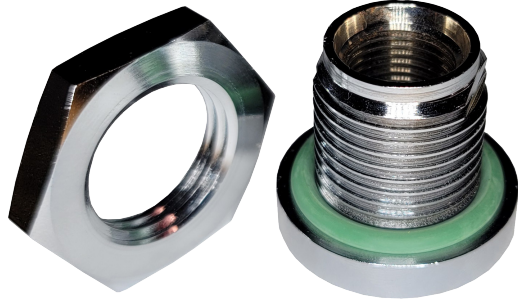


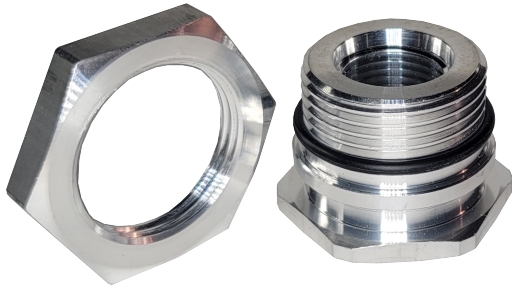
Stainless Steel BHF



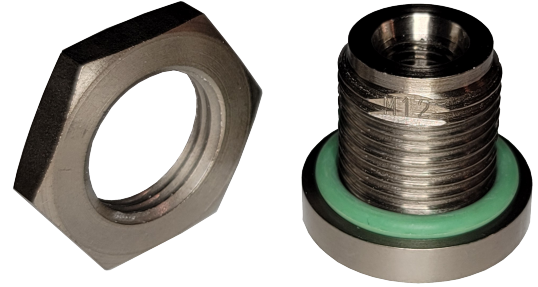
Large Brass NPT



Aluminum Mold-In

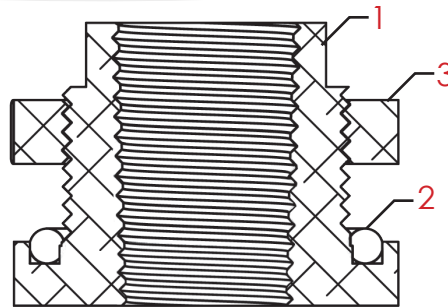
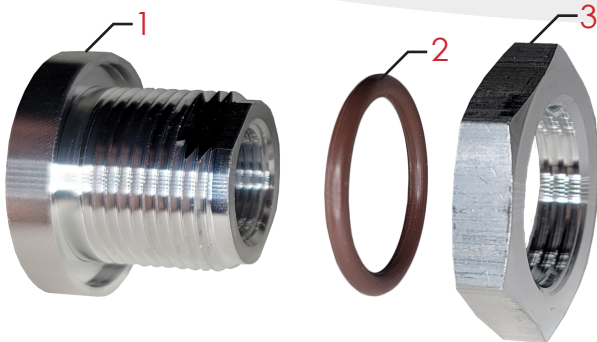


Zinc-Plated Steel



*Additional and custom sizes and configurations available

Post-Applied Bulkhead Assemblies



- 1 - Bolt
- 2 - O-Ring
- 3 - Nut

Standard Configuration

Common Materials

Nut/Bolt

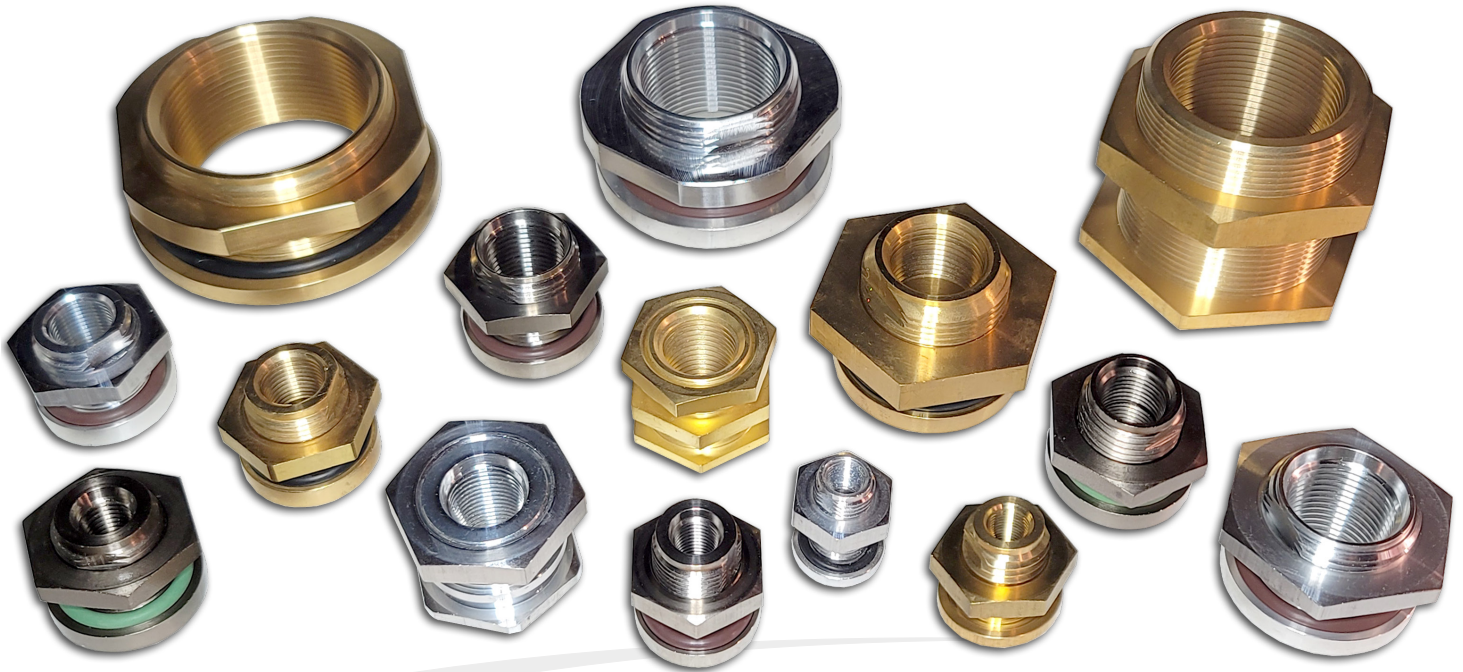
- Brass
- Aluminum
- Stainless Steel
- Zinc-Plated Steel

O-Ring

- Viton
- EPDM
- Buna-N (Nitrile)
- Butyl

Industries that use Rotaloc® BHF's

- Transportation
- Automotive
- Marine
- Agricultural
- Food Production
- Industrial Machinery
- Plumbing
- Medical
- Manufacturing
- ...and many others.



Common Sizes

SAE

(Dash Sizes In Parentheses)

Size	5/16-24 (-2)	7/16-20 (-4)	9/16-18 (-6)	3/4-16 (-8)	7/8-14 (-10)	1 ¹ / ₁₆ -12 (-16)	1 ⁵ / ₈ -12 (-20)	1 ⁷ / ₈ -12 (-24)	1 ⁷ / ₈ -12 (-24)

NPT & NPTF

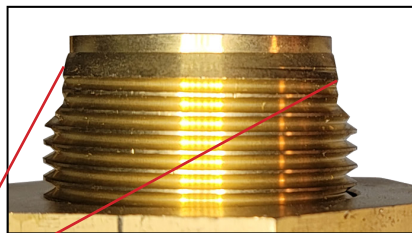
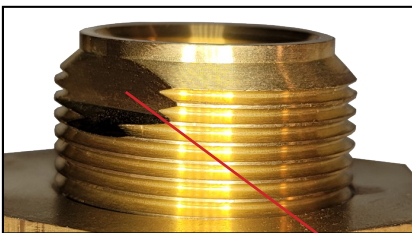
Size	1/8"	1/4"	3/8"	1/2"	3/4"	1"	1-1/4"	1-1/2"	2"	2-1/4"	2-1/2"	3"

BSP (BSPP & BSPT)

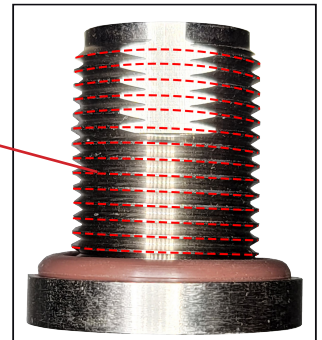
(G thread & R thread respectively)

Size	1/4"	3/8"	1/2"	3/4"	1"	1-1/2"

*Contact Rotaloc today for additional application and size information (Thread length, Across Flat Length, Overall Length, etc.)



Left-hand/
Reverse Threads
to keep insert
tight when
installing male
insert.



Wrench flats for ease of installation