



Brass - Geosert

Part Numbers

Inch Sizes

BR - GEO - 8-32	x 0.500 (OAL)	x 0.375 (AF)
BR - GEO - 10-24	x 0.750 (OAL)	x 0.375 (AF)
BR - GEO - 10-32	x 0.375 (OAL)	x 0.375 (AF)
BR - GEO - 1/4-20	x 0.650 (OAL)	x 0.375 (AF)
BR - GEO - 1/4-20	x 0.720 (OAL)	x 0.500 (AF)
BR - GEO - 5/16-18	x 0.750 (OAL)	x 0.500 (AF)
BR - GEO - 3/8-16	x 0.750 (OAL)	x 0.500 (AF)

Metric Sizes

BR - GEO - M4x0.7	x 0.375 (OAL)	x 0.375 (AF)
BR - GEO - M5x0.8	x 0.375 (OAL)	x 0.375 (AF)
BR - GEO - M6x1.0	x 0.375 (OAL)	x 0.375 (AF)
BR - GEO - M8x1.25	x 0.500 (OAL)	x 0.500 (AF)
BR - GEO - M10x1.5	x 0.625 (OAL)	x 0.625 (AF)

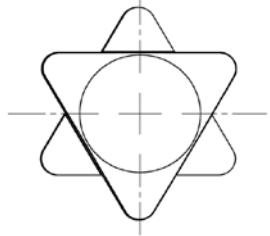
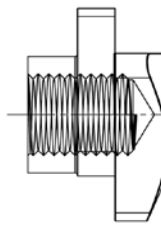
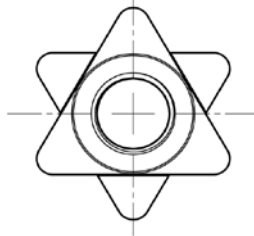
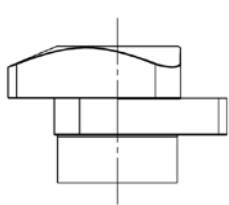
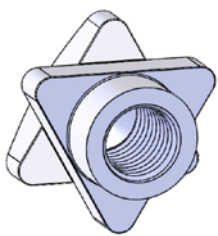
Image Sample: BR-GEO-1/4-20x0.720x0.500

A Rotaloc Int'l, LLC original. Geometric Design. Provides up to Twice the Torque & Three Times the Pull Out Strength Compared to a Standard hex Insert



Sizing Key & Product Description

Material	Sizing							
	Thd	OAL	TL	AF	H1	H2	Gh	Gd
AL- Aluminum	Thread	Overall Length	Thread Length	Across Flat	Hex Height Top	Hex Height Bottom	Groove Height	Groove Diameter
BR- Brass								
SS- Stainless Steel								
ST- Mild Steel								



*** A Rotaloc Representative will be happy to discuss your specific application and product needs. ***

Contact Us

Phone:
 (303) 948-5434 or
 Toll Free (888)Rotaloc/768-2562

Fax:
 (303) 972-0018

Email:
info@rotaloc.com

Address:
 Rotaloc Int'l, LLC
 9903 Titan Court, Suite #15
 Littleton, CO 80125 - USA

On the Web:
<http://www.rotaloc.com>

Availability

Listed sizes are typically in stock.





Stainless Steel - Geosert

Part Numbers

Inch Sizes

SS -GEO - 8-32	x 0.500 (OAL)	x 0.375 (AF)
SS -GEO - 10-24	x 0.750 (OAL)	x 0.375 (AF)
SS -GEO - 10-32	x 0.375 (OAL)	x 0.375 (AF)
SS -GEO - 1/4-20	x 0.650 (OAL)	x 0.375 (AF)
SS -GEO - 1/4-20	x 0.720 (OAL)	x 0.500 (AF)
SS -GEO - 5/16-18	x 0.750 (OAL)	x 0.500 (AF)
SS -GEO - 3/8-16	x 0.750 (OAL)	x 0.500 (AF)

Metric Sizes

SS -GEO - M4x0.7	x 0.375 (OAL)	x 0.375 (AF)
SS -GEO - M5x0.8	x 0.375 (OAL)	x 0.375 (AF)
SS -GEO - M6x1.0	x 0.375 (OAL)	x 0.375 (AF)
SS -GEO - M8x1.25	x 0.500 (OAL)	x 0.500 (AF)
SS -GEO - M10x1.5	x 0.625 (OAL)	x 0.625 (AF)

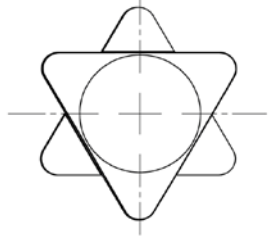
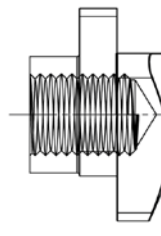
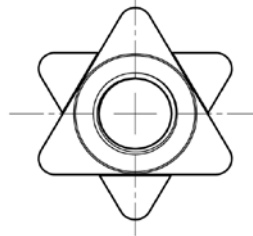
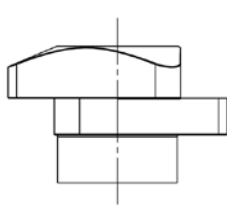
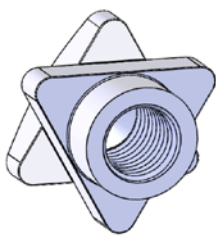
Image Sample: SS-GEO-1/4-20x0.720x0.500

A Rotaloc Int'l, LLC original. Geometric Design. Provides up to Twice the Torque & Three Times the Pull Out Strength Compared to a Standard hex Insert



Sizing Key & Product Description

Material	Sizing							
	Thd	OAL	TL	AF	H1	H2	Gh	Gd
AL- Aluminum	Thread	Overall Length	Thread Length	Across Flat	Hex Height Top	Hex Height Bottom	Groove Height	Groove Diameter
BR- Brass								
SS- Stainless Steel								
ST- Mild Steel								



*** A Rotaloc Representative will be happy to discuss your specific application and product needs. ***

Contact Us

Phone:

(303) 948-5434 or

Toll Free (888)Rotaloc/768-2562

Fax:

(303) 972-0018

Email:

info@rotaloc.com

Address:

Rotaloc Int'l, LLC

9903 Titan Court, Suite #15
Littleton, CO 80125 - USA

On the Web:

<http://www.rotaloc.com>

Availability

Listed sizes are typically in stock.





Mild Steel - Geosert

Part Numbers

Inch Sizes

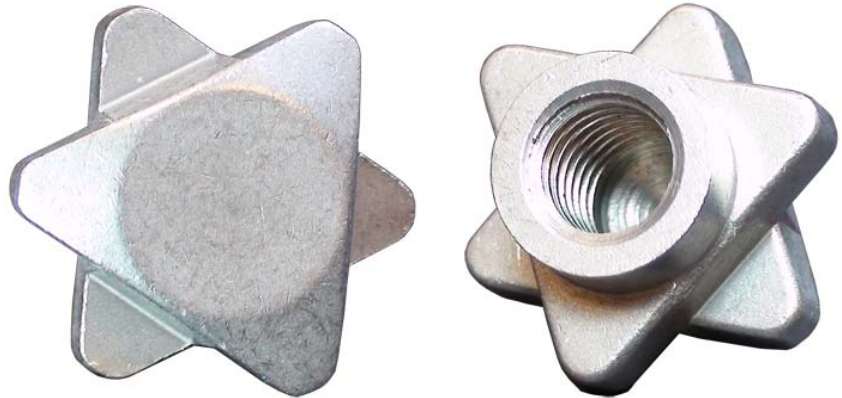
ST -GEO - 8-32	x 0.500 (OAL)	x 0.375 (AF)
ST -GEO - 10-24	x 0.750 (OAL)	x 0.375 (AF)
ST -GEO - 10-32	x 0.375 (OAL)	x 0.375 (AF)
ST -GEO - 1/4-20	x 0.650 (OAL)	x 0.375 (AF)
ST -GEO - 1/4-20	x 0.720 (OAL)	x 0.500 (AF)
ST -GEO - 5/16-18	x 0.750 (OAL)	x 0.500 (AF)
ST -GEO - 3/8-16	x 0.750 (OAL)	x 0.500 (AF)

Metric Sizes

ST -GEO - M4x0.7	x 0.375 (OAL)	x 0.375 (AF)
ST -GEO - M5x0.8	x 0.375 (OAL)	x 0.375 (AF)
ST -GEO - M6x1.0	x 0.375 (OAL)	x 0.375 (AF)
ST -GEO - M8x1.25	x 0.500 (OAL)	x 0.500 (AF)
ST -GEO - M10x1.5	x 0.625 (OAL)	x 0.625 (AF)

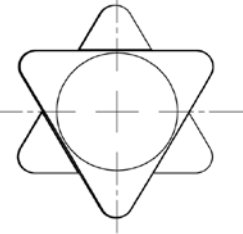
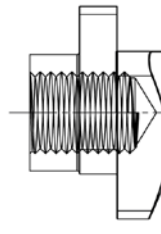
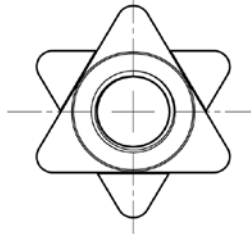
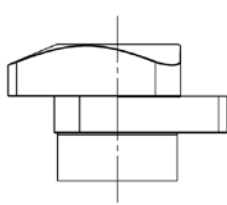
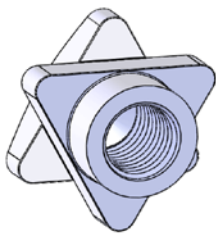
Image Sample: ST-GEO-1/4-20x0.720x0.500

A Rotaloc Int'l, LLC original. Geometric Design. Provides up to Twice the Torque & Three Times the Pull Out Strength Compared to a Standard hex Insert



Sizing Key & Product Description

Material	Sizing							
	Thd	OAL	TL	AF	H1	H2	Gh	Gd
AL- Aluminum	Thread	Overall Length	Thread Length	Across Flat	Hex Height Top	Hex Height Bottom	Groove Height	Groove Diameter
BR- Brass								
SS- Stainless Steel								
ST- Mild Steel								



*** A Rotaloc Representative will be happy to discuss your specific application and product needs. ***

Contact Us

Phone:

(303) 948-5434 or

Toll Free (888)Rotaloc/768-2562

Fax:

(303) 972-0018

Email:

info@rotaloc.com

Address:

Rotaloc Int'l, LLC

9903 Titan Court, Suite #15
Littleton, CO 80125 - USA

On the Web:

<http://www.rotaloc.com>

Availability

Listed sizes are typically in stock.

